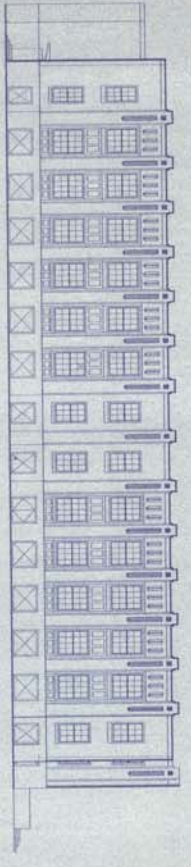
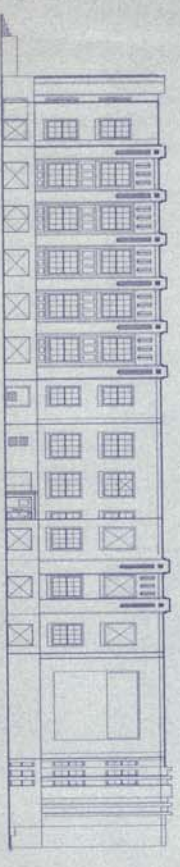


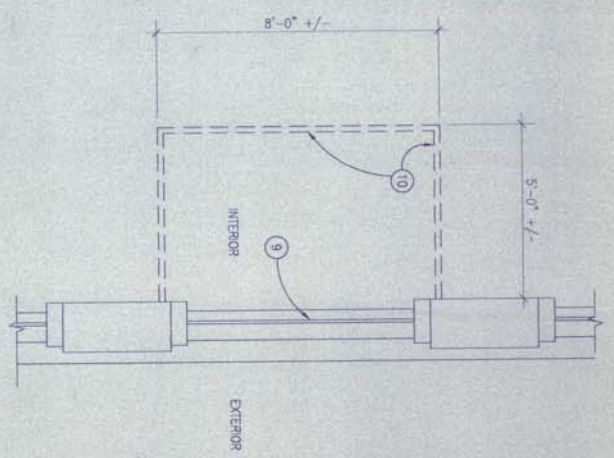
1 HAZARDOUS MATERIALS SAMPLE LOCATIONS
1/2" = 1'-0"



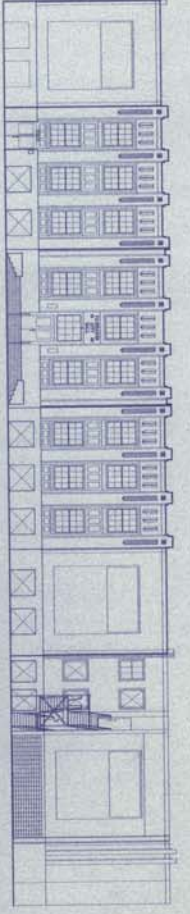
3 SOUTH ELEVATION
1/2" = 1'-0"



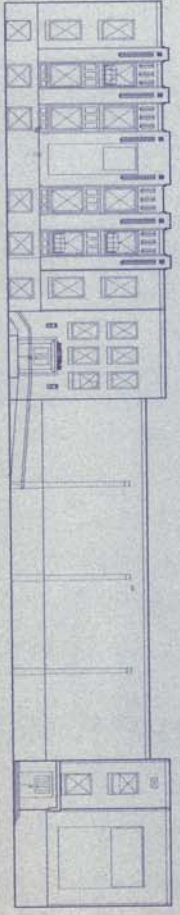
5 NORTH ELEVATION
1/2" = 1'-0"



2 TEMPORARY DUST SCREEN DETAIL
1/2" = 1'-0"



4 EAST ELEVATION
1/2" = 1'-0"



6 WEST ELEVATION
1/2" = 1'-0"

LEGEND:

- ➔ APPROXIMATE SAMPLE LOCATION
- MS-# SAMPLE NUMBER
- MS-#-D ALL LAYERS TO THE DECK WERE SAMPLED
- MS-#-P ONLY THE PATCH WAS SAMPLED
- MS-#-QA SAMPLES SENT TO A SECOND LABORATORY FOR QUALITY ASSURANCE

GENERAL NOTES:

1. A SURVEY WAS PERFORMED BY AN APPROVED INSPECTOR TO DETERMINE THE PRESENCE OF ASBESTOS AND LEAD CONTAINING MATERIALS. SOME OF THE INFORMATION THAT REPORT IS SHOWN ON THIS SHEET WHERE IT IS APPLICABLE TO WORK PERFORMED UNDER THIS CONTRACT. THE FULL REPORT IS AVAILABLE IN THE CITY ENGINEER'S OFFICE FOR REVIEW BY THE BIDDING CONTRACTORS.
2. ASBESTOS
ASBESTOS CONTAINING MATERIAL (ACM) WAS DETECTED IN THE EXTERNAL WINDOW CASING. ACM SHALL BE DISPOSED OF IN AN ASBESTOS APPROVED LANDFILL SUCH AS THE FAIRBANKS NORTH STAR BROOKHOLM'S LANDFILL.
WORK DISTURBING ASBESTOS-CONTAINING WINDOW CASING WILL REQUIRE AIR MONITORING TO DOCUMENT WORKER EXPOSURE IN THE ABSENCE OF AN APPROVED NEGATIVE EXPOSURE ASSESSMENT (NEA).
WORKERS WHO WILL POTENTIALLY DISTURB ASBESTOS-CONTAINING CASING WILL BE REQUIRED TO ATTEND A MINIMUM 8 HOUR ASBESTOS-TRAINING CLASS.
ALL SAMPLES COLLECTED FROM THE ROOF AND UNDER THE ROOF IN THE ATTIC WERE FOUND NOT TO CONTAIN ASBESTOS. ROOFING SAMPLES WERE LABORATORY ANALYZED BY INDIVIDUAL LAYER AND COMPARED BY SECOND LABORATORY.
THE PRESENCE OF SNOW LIMITED THE VISUAL INSPECTION OF THE ROOF AND SAMPLING AREAS.
TYPICAL ROOF CONSTRUCTION IN WORK AREAS A AND B:
APPROXIMATELY 6 LAYERS OF FELT (2 PLY)
ASPHALT
3 LAYERS OF FELT
2" WETLITE
2" WETLITE
ORIGINAL ROOF 3-2" BLACK FELT
1.5" PERLITE
WOOD DECKING
3. LEAD BASED PAINT
MANY OF THE WINDOW COMPONENTS SAMPLED, INCLUDING BUT NOT LIMITED TO WINDOW SASHES, WINDOW FRAMES AND WINDOW COULISSES, CONTAIN LEAD BASED PAINT (LBP). ALL WINDOW COMPONENTS SAMPLED SHALL BE CONSIDERED TO CONTAIN LBP. THE WASTE STREAM IS TO BE SUBJECTED TO A TOLP TEST BEFORE DISPOSAL. IT IS EXPECTED THAT THE TOLP WILL PASS AND WILL BE ABLE TO BE DISPOSSED OF AS NON-HAZARDOUS WASTE.
AIR MONITORING SHALL BE PERFORMED DURING THE REMOVAL PROCESS IN ORDER TO DOCUMENT THE LEVEL OF AN APPROVED NEGATIVE EXPOSURE AT A MINIMUM AND LONGER IF THE EXPOSURE IS NEAR OR ABOVE THE ACTION LEVEL LISTED BY FEDERAL REGULATIONS.
WORKERS WHO WILL REMOVE, TRANSPORT, AND DISPOSE OF WINDOW COMPONENTS ARE REQUIRED TO HAVE A MINIMUM OF 2-HOUR LEAD ABSENCE TRAINING.

KEYED NOTES:

- 1 BLACK TOP COAT
- 2 SILVER TOP COAT
- 3 PATCH
- 4 OMS-18-P
- 5 OMS-12-D, OMS-13-D, AND OMS-25-QA
- 6 OMS-14-D AND OMS-26-QA
- 7 OMS-15-P
- 8 PIGEON FEEDS PRESENT BETWEEN ROOF AND CEILING
- 9 EXISTING WINDOW TO BE REPLACED.
- 10 CONTRACTOR SHALL PROVIDE TEMPORARY DUST-CONTAINING ENCLOSURE FROM FLOOR TO CEILING DURING WINDOW WORK.

ASBESTOS SAMPLE RESULTS:

SAMPLE #	SAMPLE DESCRIPTION AND LOCATION	% ASBESTOS	% OTHER MATERIAL
OM-12	BLACK FELT AND ASPHALT LAYERS, PATCH, WORK AREA A	NO ASBESTOS DETECTED	70% CELLULOSE 20% NON-FIBROUS
OM-11	BLACK FELT AND ASPHALT LAYERS, WORK AREA B	NO ASBESTOS DETECTED	84% CELLULOSE 16% NON-FIBROUS
OM-14	BLACK FELT AND ASPHALT, 5'x7' SOLE WORK AREA B	NO ASBESTOS DETECTED	10% CELLULOSE 90% NON-FIBROUS
OM-15	PATCHING, BLACK FELT, WEST END WORK AREA B	NO ASBESTOS DETECTED	7% CELLULOSE 93% NON-FIBROUS
OM-18	FRONTOON, BLACK FELT, NORTH OF EXISTING 20'x11' WORK AREA A	NO ASBESTOS DETECTED	20% CELLULOSE 80% NON-FIBROUS
OM-23	BLACK ROOFING FELT, WORK AREA A	NO ASBESTOS DETECTED	14% CELLULOSE 86% NON-FIBROUS
OM-26	BLACK TAR PATCH WITH LONG WHITE FIBERS, EAST WALL, WORK AREA C	NO ASBESTOS DETECTED	<1% CELLULOSE 99% NON-FIBROUS
OM-28	BLACK TAR PATCH WITH LONG WHITE FIBERS, EAST WALL, WORK AREA C	NO ASBESTOS DETECTED	26% CELLULOSE 74% NON-FIBROUS

HAZARDOUS MATERIALS FAIRBANKS CITY HALL ROOF AND WINDOWS REPLACEMENT

