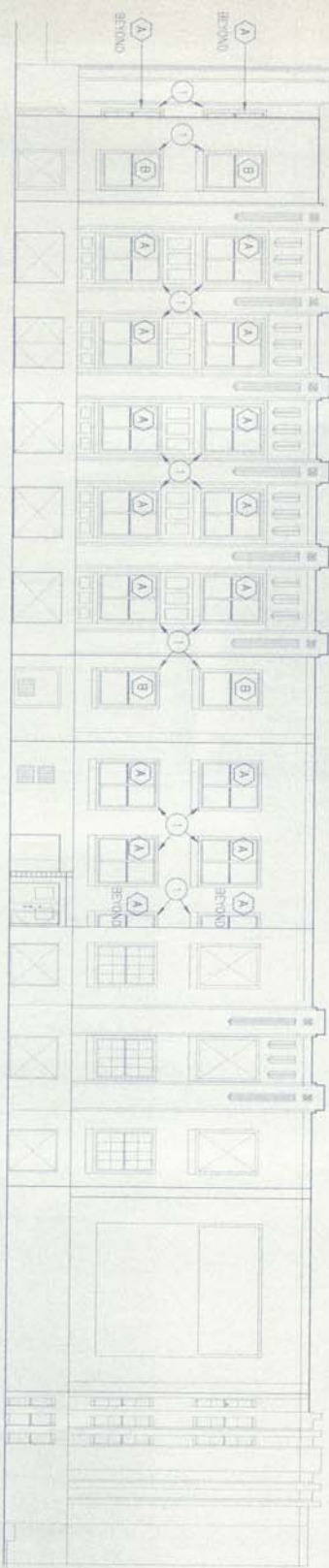
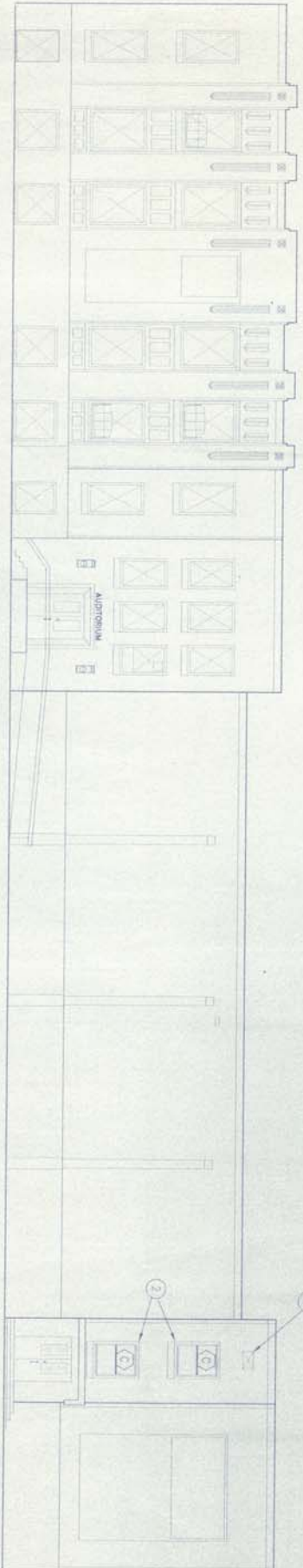


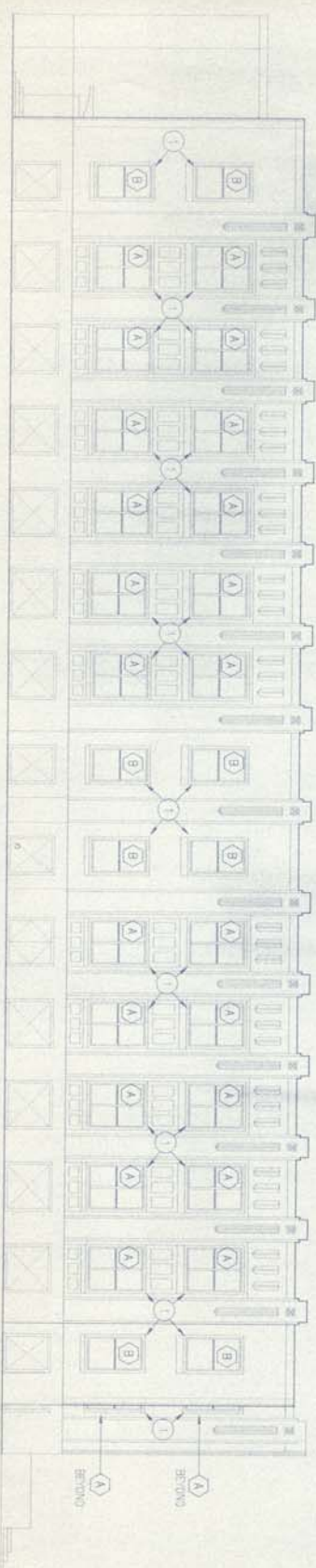
1 EAST ELEVATION
1/8" = 1'-0"



2 NORTH ELEVATION
1/8" = 1'-0"



3 WEST ELEVATION
1/8" = 1'-0"



4 SOUTH ELEVATION
1/8" = 1'-0"

GENERAL NOTES:

1. EXISTING AS-BUILT WINDOW CONDITIONS AND DETAILS WERE EXTENSIVELY LIMITED OR NON-EXISTENT; THEREFORE, THE NEW DETAILS SHOWN HEREON MAY NOT EXACTLY SHOW THE ACTUAL CONDITIONS OCCURRING ON THE PROJECT.
2. BIDDERS SHALL VERIFY THE SET AND VERIFY EXISTING CONDITIONS AT WINDOW HEADS, SIDINGS, SILL, JAMBES, AND SILL THROUGHOUT THE PROJECT.
3. A PARTIAL SET OF DRAWINGS FOR THE 1948 ADDITION TO THE BUILDING WILL BE AT THE CITY ENGINEER'S OFFICE FOR REVIEW BY THE BIDDERS. DRAWINGS OF THE ORIGINAL BUILDING AND OTHER ADDITIONS ARE NOT AVAILABLE.
4. IN SOME LOCATIONS, THE EXISTING SUSPENDED ADJUSTABLE COILING & LAMPS FROM THE WINDOW HEADS IF WINDOW RE-ACQUISIT REQUIREDS PRELIM. REMOVAL OF THESE DETAILS, THEY SHALL BE RESTORED TO THEIR ORIGINAL CONDITION.
5. IN SOME LOCATIONS, EXISTING BLINDS WILL NEED TO BE REMOVED PRIOR TO RE-ACQUISIT OF THE WINDOWS. PRESERVE AND REINSTALL THESE BLINDS IN ORIGINAL CONDITION.
6. SIZES IN THE WINDOW SCHEDULE ARE ROUGH PREVIEW. ACTUAL DIMENSIONS SHALL BE FIELD VERIFIED FOR EACH LOCATION BY THE CONTRACTOR.
7. BIDDERS' ADJUSTOR SURVEYS AS REQUIRED TO PROVIDE FINISHED APPEARANCE MATCH EXISTING ADJACENT EXTERIOR AND INTERIOR COLORS.
8. SEE DRAWING SHEET A8 FOR WINDOW DETAILS.
9. EXCEPT IN UNOCCUPIED SPACES OR CONDUIT CHAMBERS, THERE SHALL BE A 2" AIR GAP IN EACH WINDOW WORK AREA OR 6" WINDOWS MINIMUM.

KEYED NOTES:

1. REMOVE EXISTING WINDOW. INSTALL NEW WINDOW.
2. REMOVE EXISTING WINDOW AND PLYWOOD. INSTALL NEW WINDOW.
3. REMOVE EXISTING PLASTER. SET IN GRINDING WITH CONCRETE TO THICKNESS OF EXISTING WALL. FILL WITH PORTLAND CEMENT MORTAR. PAINT TO MATCH EXISTING EXTERIOR COLOR SQUARE. COORDINATE WITH NOTES UNDER WORK AREA B DESCRIBED ON SHEET 02.

WINDOW SCHEDULE:

- A 6'-0" WIDE x 8'-0" HIGH DOUBLE-HUNG WINDOW
- B 4'-9" WIDE x 8'-0" HIGH DOUBLE-HUNG WINDOW
- C 4'-9" WIDE x 6'-0" HIGH DOUBLE-HUNG WINDOW
- D 6'-0" WIDE x 6'-0" HIGH PROJECT WINDOW

