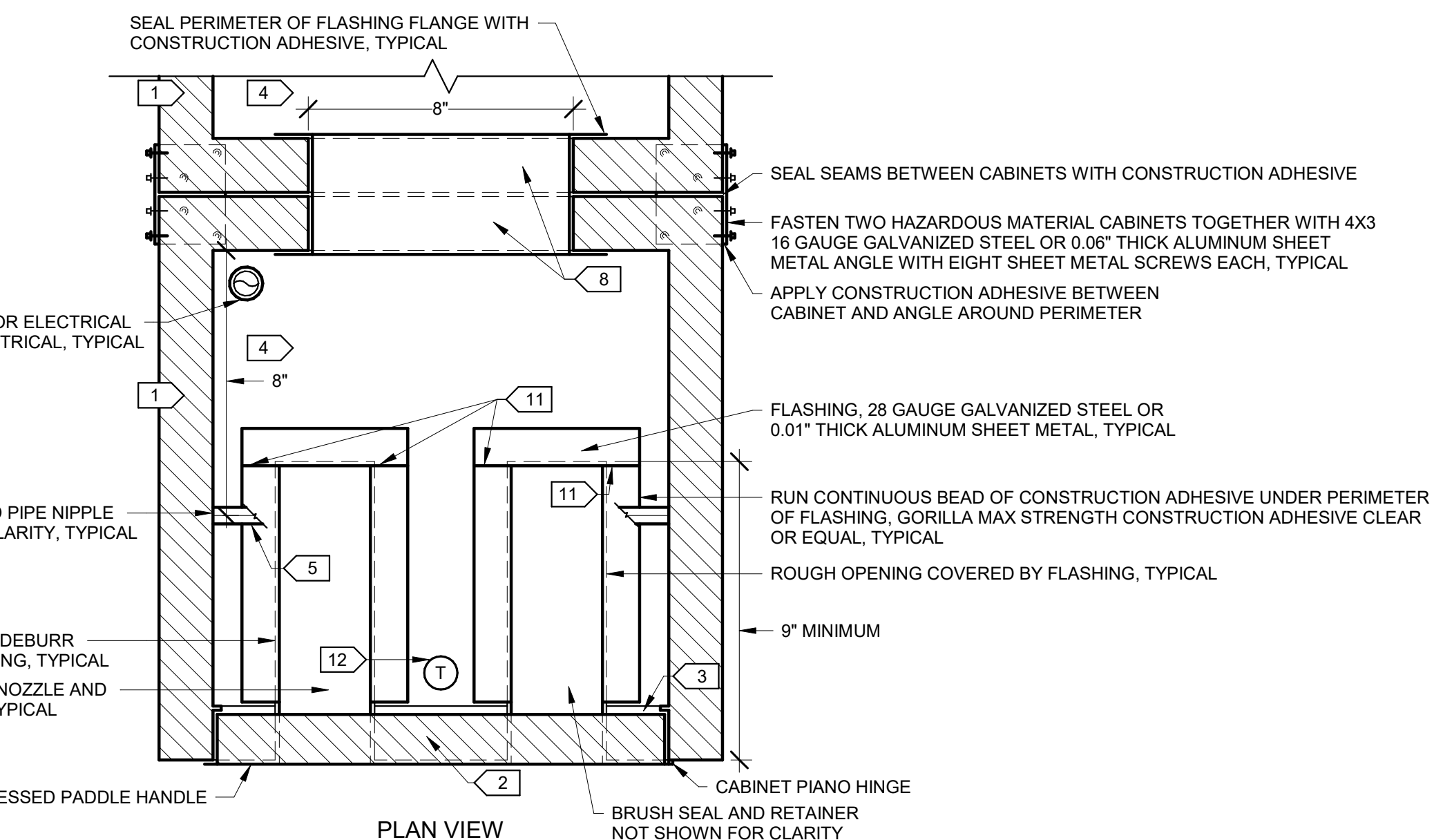
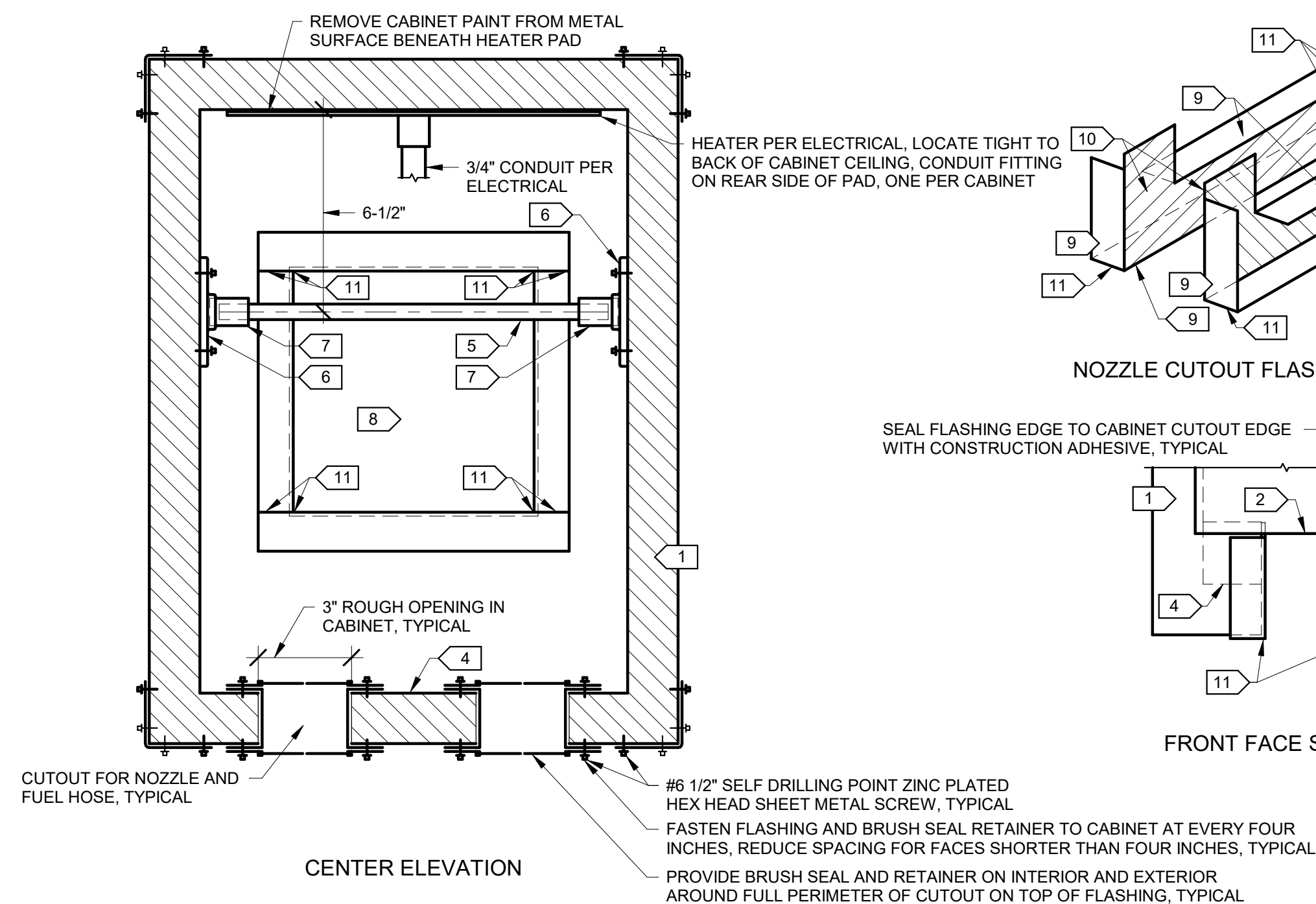
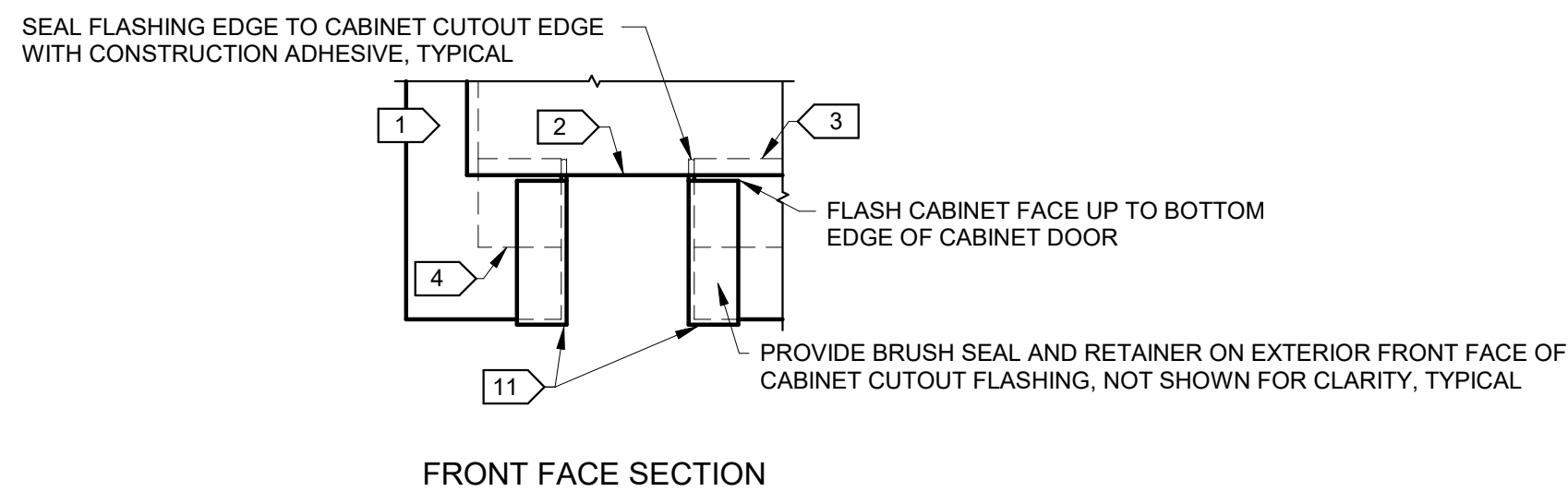


1 FUELING ISLAND PLAN  
M001 1/4" = 1'-0"



2 FUEL NOZZLE ENCLOSURE CONSTRUCTION DETAIL  
M001 NO SCALE



DETAIL SPECIFIC NOTES

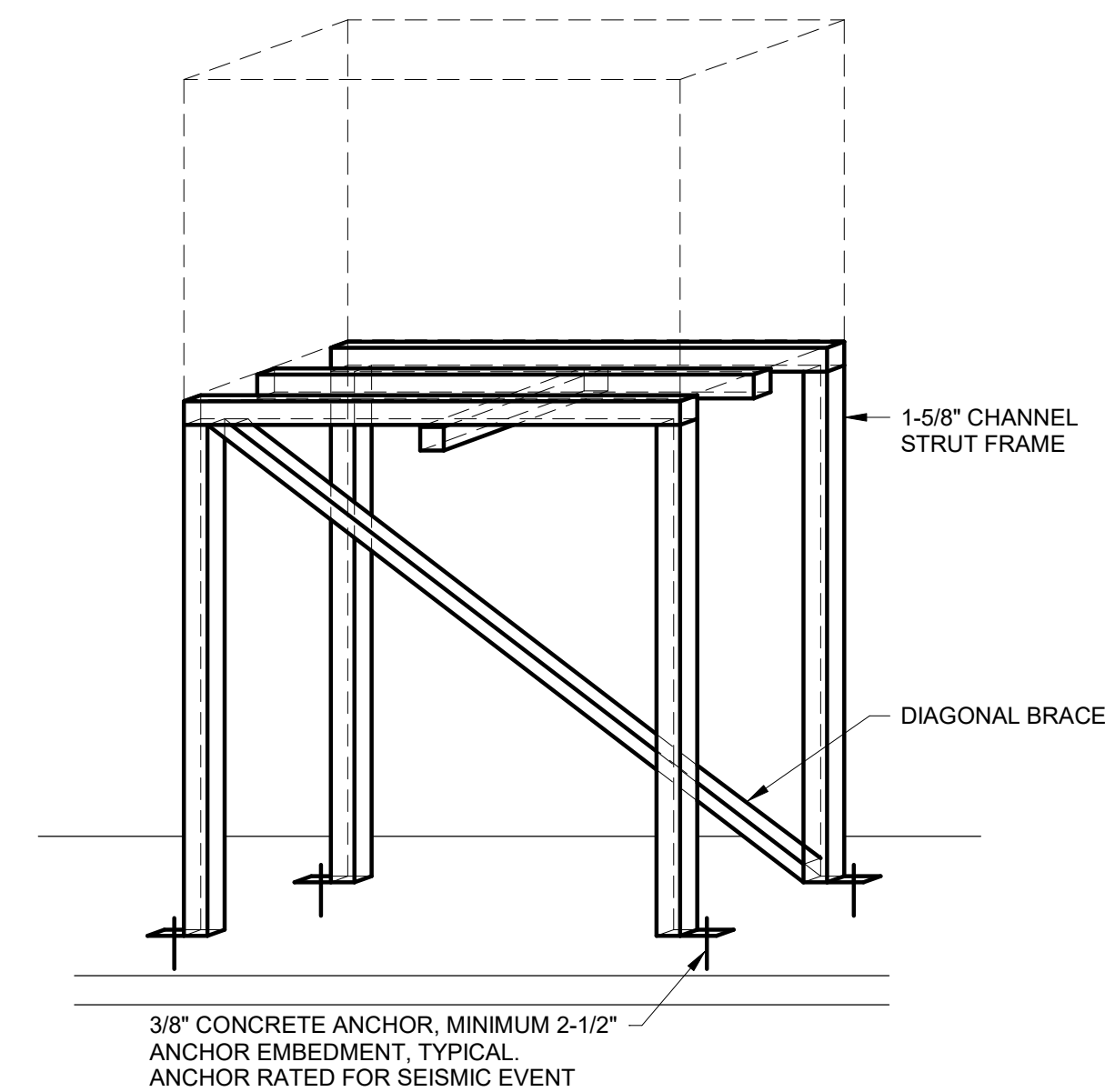
- 1 FLAMMABLE STORAGE CABINET, CONSTRUCTED OF 18 GAUGE STEEL WITH 1-1/4" DOUBLE WALL AIR SPACE.
- 2 CABINET DOOR.
- 3 CABINET DOOR SILL.
- 4 BOTTOM OF CABINET SUMP.
- 5 1/2" DIAMETER UNTHREADED GALVANIZED STEEL ROD FOR NOZZLE HOOKS.
- 6 1/2" STEEL FLOOR FLANGE PIPE FITTING, FASTEN TO CABINET WITH SHEET METAL SCREWS.
- 7 1/2" STEEL PIPE NIPPLE, NIPPLE SHALL BE MINIMUM 1-1/4" IN LENGTH.
- 8 8X8 ROUGH OPENING IN REAR OF EACH CABINET.
- 9 INSTALL BRUSH SEAL AND RETAINER TO THIS SURFACE TO COVER FLASHED OPENING.
- 10 DO NOT INSTALL BRUSH SEAL AND RETAINER TO THIS SURFACE.
- 11 SEAM IN FLASHING, SEAL SEAM WITH CONSTRUCTION ADHESIVE AFTER FASTENING IN PLACE.
- 12 LOCATE THERMOSTAT OPPOSITE PAD HEATER ON CABINET CEILING, FACTORY SET TO 50°F, PER ELECTRICAL.

DETAIL GENERAL NOTES

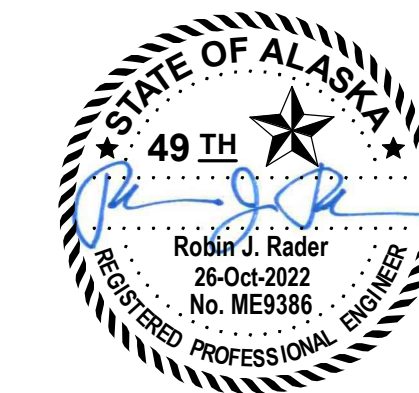
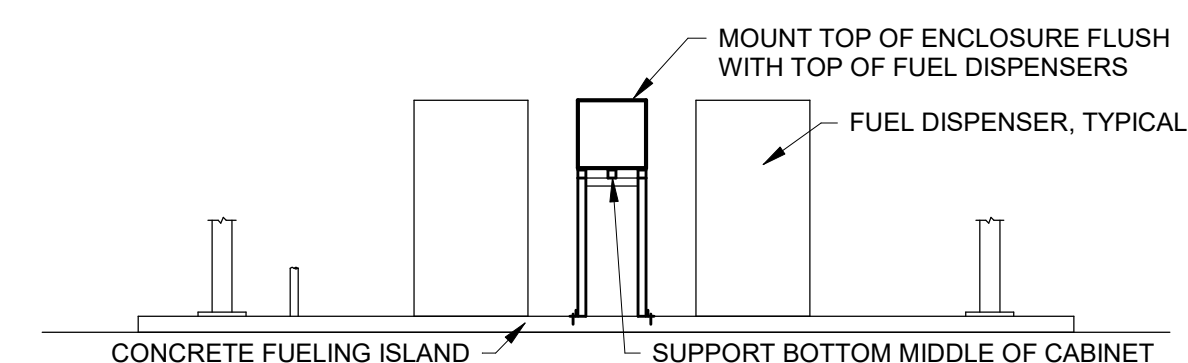
1. INSTALL NOZZLE HOOKS ON ALL NOZZLES TO HANG FROM ROD WITHIN CABINET.



3 FUEL NOZZLE ENCLOSURE SUPPORT DETAIL  
M001 NO SCALE



4 FUELING ISLAND TYPICAL ELEVATION  
M001 NO SCALE



CITY OF FAIRBANKS TANK FARM FUEL PUMP ENCLOSURE

ISSUE DATE 26 OCT 2022  
COMM. NUMBER 202201  
DESIGNED BY RJR  
DRAWN BY ERM  
SCALE 0" = 1"

MECHANICAL PLANS



## GENERAL SHEET NOTES

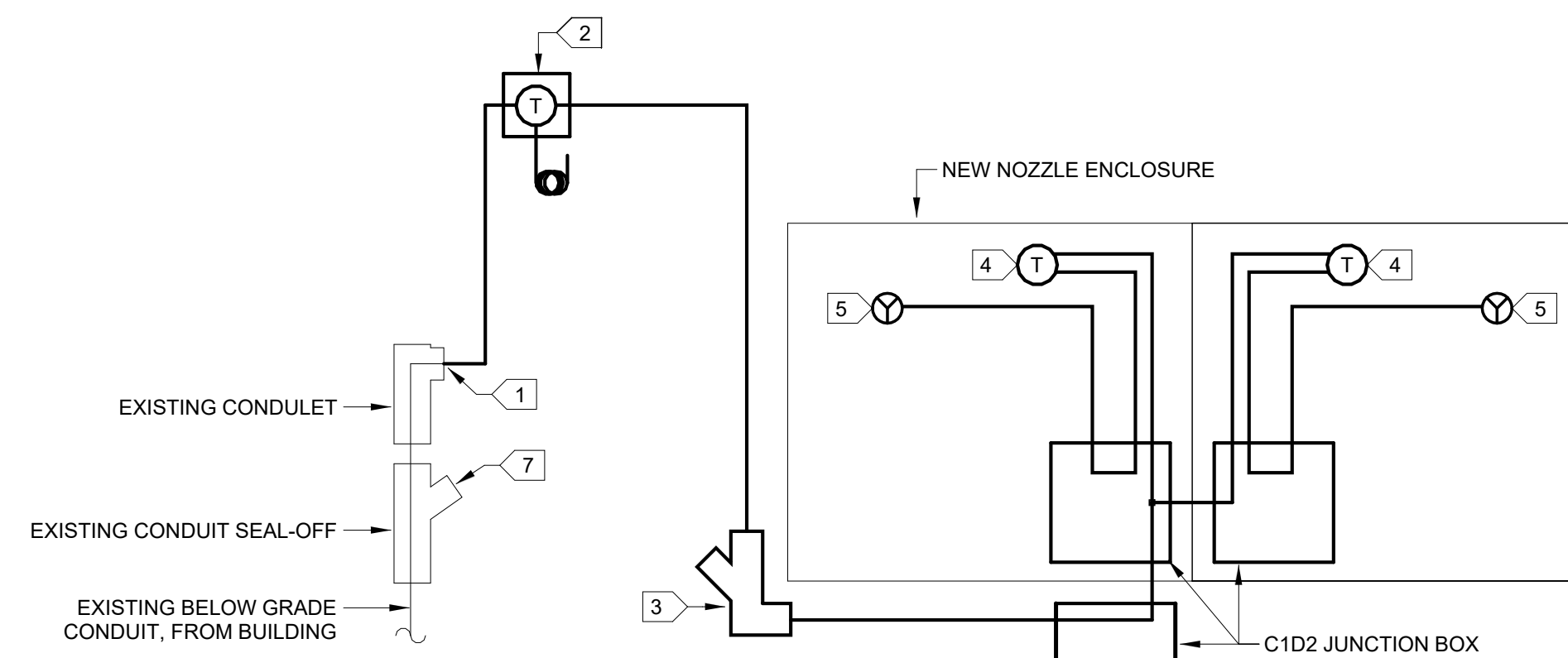
1. IN GENERAL, THE CONDUIT ROUTINGS SHOWN ON THIS SHEET ARE CONCEPTUAL ONLY. THE CONTRACTOR MAY MODIFY OR REROUTE CONDUITS AS NECESSARY TO ACCOMMODATE FIELD CONDITIONS.
2. ALL ELECTRICAL INSTALLATIONS SHALL BE COMPLIANT WITH NFPA 70, NATIONAL ELECTRICAL CODE (NEC), 2020.
3. THE INSIDE OF THE NEW NOZZLE ENCLOSURE AND DIRECTLY BELOW IS A CLASS 1, DIVISION 2 (C1D2) HAZARDOUS LOCATION. ALL ELECTRICAL DEVICES, CONDUITS, WIRING, AND OTHER ITEMS WITHIN THE HAZARDOUS LOCATION SHALL BE LISTED FOR USE WITHIN A C1D2 SPACE. SEE NEC ARTICLE 501 FOR ADDITIONAL REQUIREMENTS.
4. #10 AWG CONDUCTORS HAVE ALREADY BEEN PULLED THROUGH THE EXISTING BELOW GRADE CONDUIT BETWEEN THE BUILDING ELECTRICAL GUTTER AND THE FUELING ISLANDS. THE EXISTING CONDUCTORS ARE COILED AT THE CONDUIT STUB-UPS AT THE FUELING ISLANDS. PROTECT EXISTING CONDUCTORS DURING PROJECT WORK.
5. EXISTING PANELBOARD "EMF" IS A 100-AMP, MAIN LUGS ONLY, SQUARE D, "NQ" PANELBOARD. NEW CIRCUIT BREAKERS SHALL BE COMPATIBLE WITH THE EXISTING PANELBOARD.

## # SPECIFIC SHEET NOTES

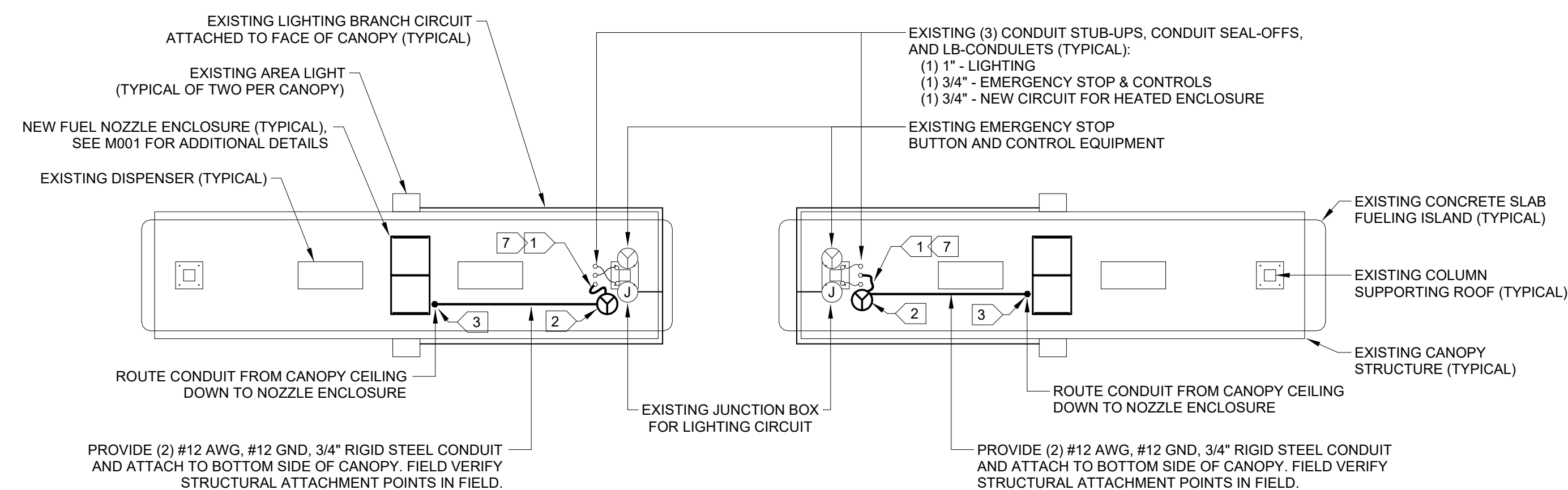
1. EXTEND CIRCUIT CONDUIT AND CONDUCTORS FROM EXISTING CONDUIT SEAL-OFF & CONDULET UP TO NEW SYSTEM COMPONENTS.
2. PROVIDE A NEW AMBIENT TEMPERATURE CONTROLLER AND SENSOR SUITABLE FOR OUTDOOR USE. PROVIDE ONE DEVICE PER FUELING ISLAND. TEMPERATURE CONTROLLER SHALL TURN-ON BELOW 0°F AND TURN-OFF ABOVE 0°F. LOCATE DEVICE ON STRUCTURAL COLUMN OR ON UNDERSIDE OF CANOPY. MOUNT DEVICE TO COLUMN. INSTALL DEVICE PER MANUFACTURER'S INSTALLATION INSTRUCTIONS. BASIS OF DESIGN IS 'BRISKHEAT' MODEL 'TB250N-150'.
3. PROVIDE A CONDUIT SEAL-OFF BEFORE CONDUIT ENTERS NEW NOZZLE ENCLOSURE.
4. PROVIDE CLASS 1, DIVISION 2, AUTOMATIC ON/OFF THERMOSTAT CONTROL DEVICE MOUNTED WITHIN NEW NOZZLE ENCLOSURE. PROVIDE 1 FOR EACH COMPARTMENT OF THE NEW NOZZLE ENCLOSURES. DEVICE SHALL TURN-ON AT 35°F AND TURN-OFF AT 50°F. DEVICE SHALL BE MOUNTED TO SURFACE IN APPROXIMATE LOCATION SHOWN. INSTALL DEVICE PER MANUFACTURER'S INSTALLATION INSTRUCTIONS. BASIS OF DESIGN IS 'BRISKHEAT' MODEL 'TD101X-050'.
5. PROVIDE CLASS 1, DIVISION 2, SILICONE RUBBER HEATING BLANKET IN EACH COMPARTMENT OF THE NEW NOZZLE ENCLOSURE. HEATING BLANKET SHALL PRODUCE 180W OF HEAT AND BE 6" BY 12". LOCATE HEATING BLANKET ABOVE CENTER ROD SUPPORTING NOZZLES. INSTALL HEATING PAD PER MANUFACTURER'S INSTALLATION INSTRUCTIONS. BASIS OF DESIGN IS 'BRISKHEAT' MODEL 'SRX-06-12-180-1-P-T4'.
6. EXTEND CIRCUIT CONDUIT AND CONDUCTORS FROM EXISTING ELECTRICAL GUTTER UP TO PANELBOARD "EMF" ON THE MEZZANINE PLATFORM. WIRE BOTH CONNECTIONS TO PANELBOARD "EMF", CIRCUIT "10". PROVIDE A NEW 15/1 CIRCUIT BREAKER WITH INTEGRAL 30-mA GROUND FAULT PROTECTION.
7. REMOVE AND REPLACE PUTTY WITHIN SEAL-OFF TO ENSURE UNIT FUNCTIONS AS INTENDED.



1 SITE PLAN  
E001 NO SCALE



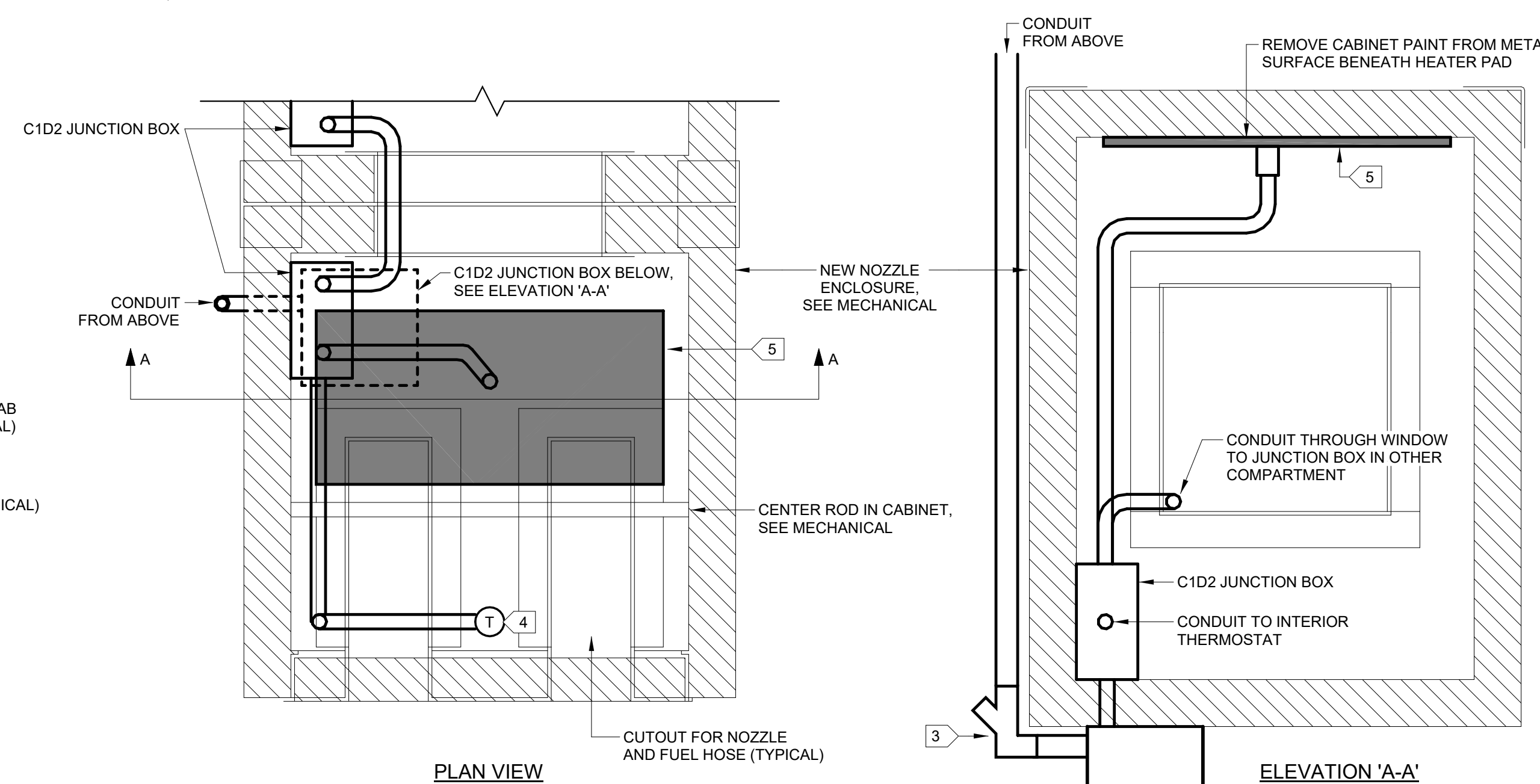
3 CONCEPT ONE-LINE WIRING DIAGRAM  
E001 NO SCALE



SOUTH FUELING ISLAND

NORTH FUELING ISLAND

2 FUELING ISLAND - ELECTRICAL PLAN  
E001 NO SCALE



4 FUEL NOZZLE ENCLOSURE - ELECTRICAL CONCEPT DETAIL  
E001 NO SCALE

## CITY OF FAIRBANKS TANK FARM FUEL PUMP ENCLOSURE

ISSUE DATE 26 OCT 2022  
COMM. NUMBER 202201  
DESIGNED BY MWK  
DRAWN BY MWK  
SCALE 0" = 1"

## ELECTRICAL PLANS

# E001