



C. LEMARCHAND KENNEDY AND ASSOCIATES:
environdesign
 ARCHITECTURE, PLANNING, ENERGY MANAGEMENT
 1327 KALAKAKET, FAIRBANKS, ALASKA 99701 (907) 479-3193

REVISIONS:

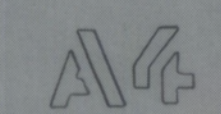
PROJECT NO. 8602
 DATE: 6.30.86
 DRAWN: W.H., J.M.B.
 CHECKED:

CONTENTS:
 EXTERIOR
 ELEVATIONS

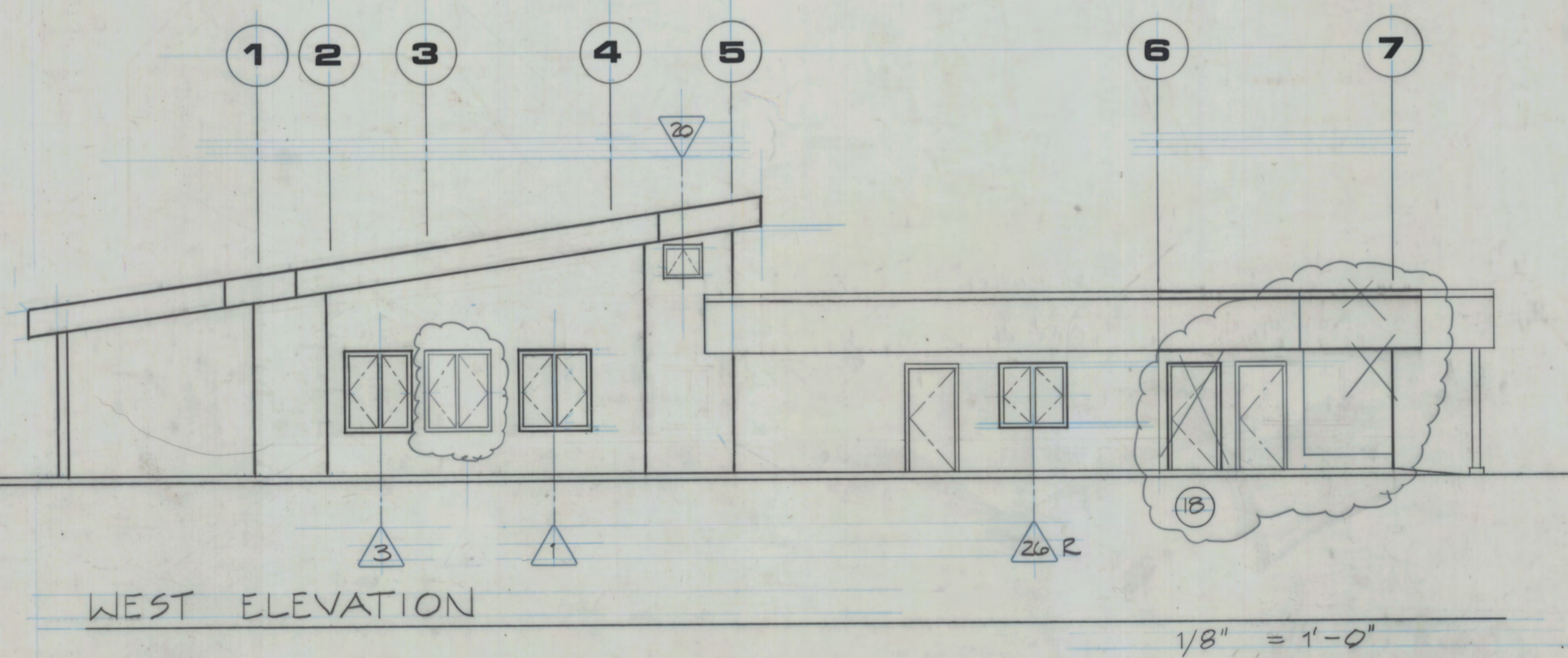
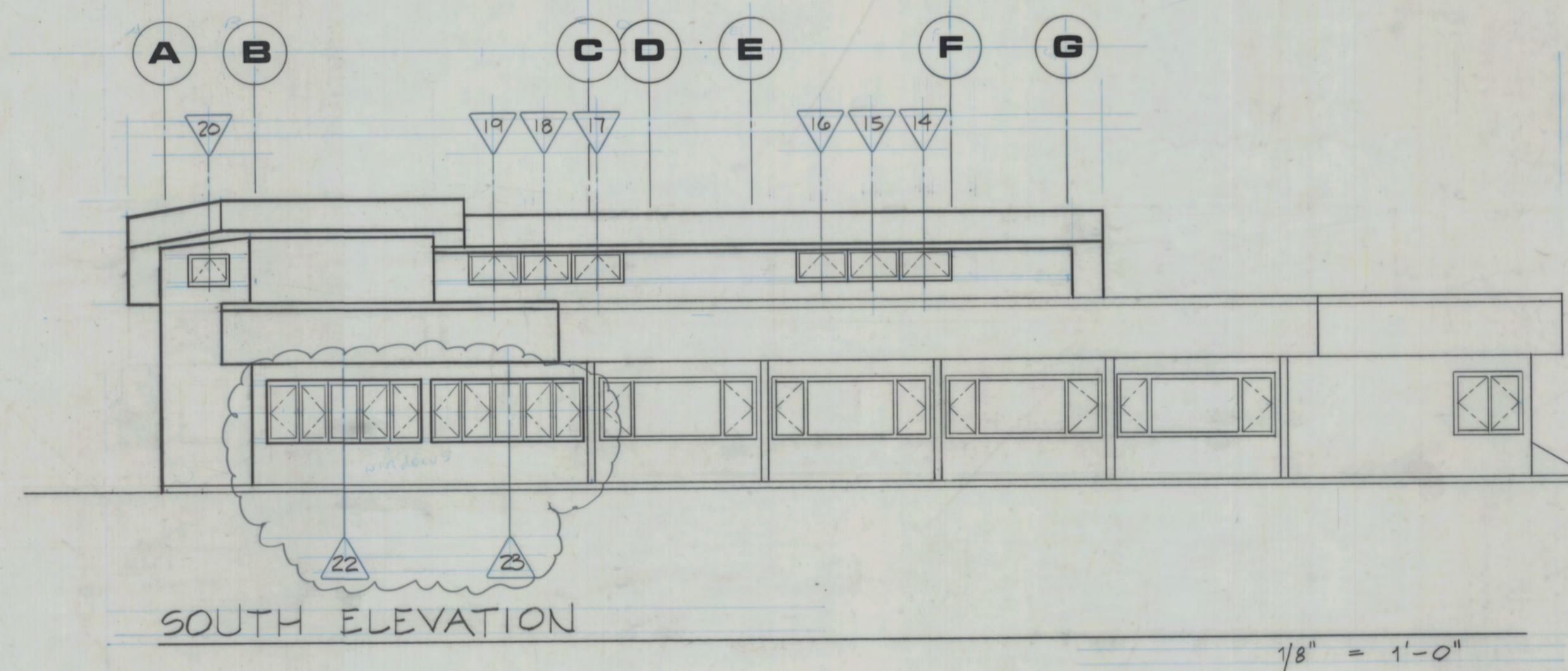
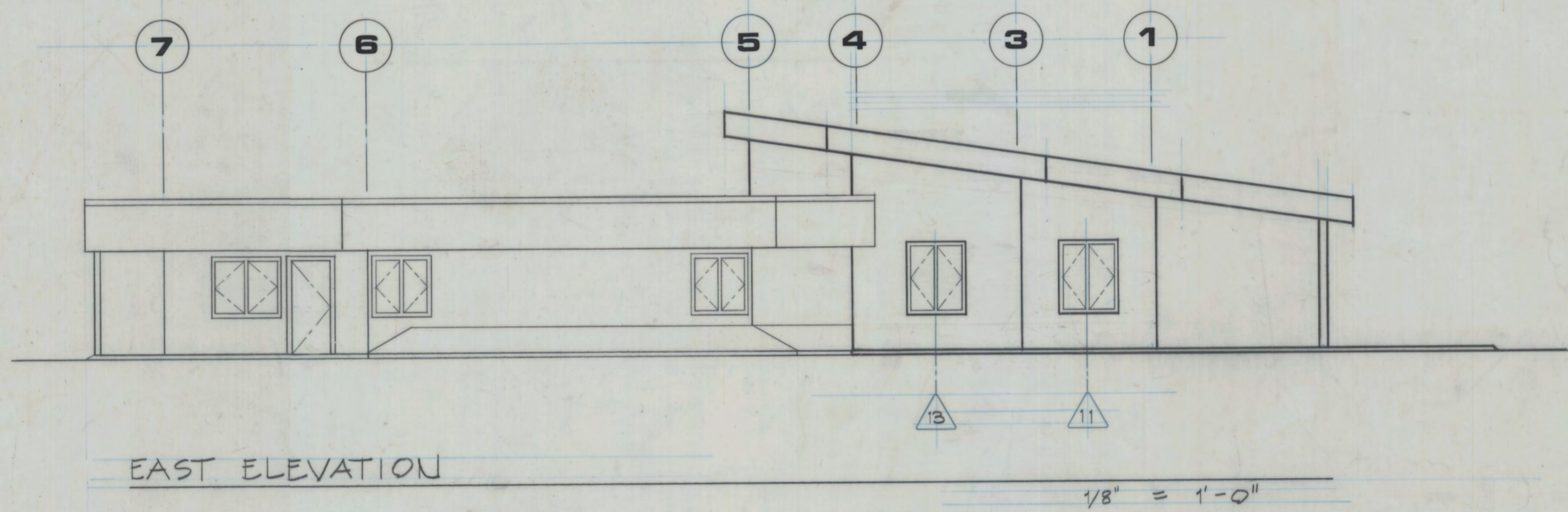
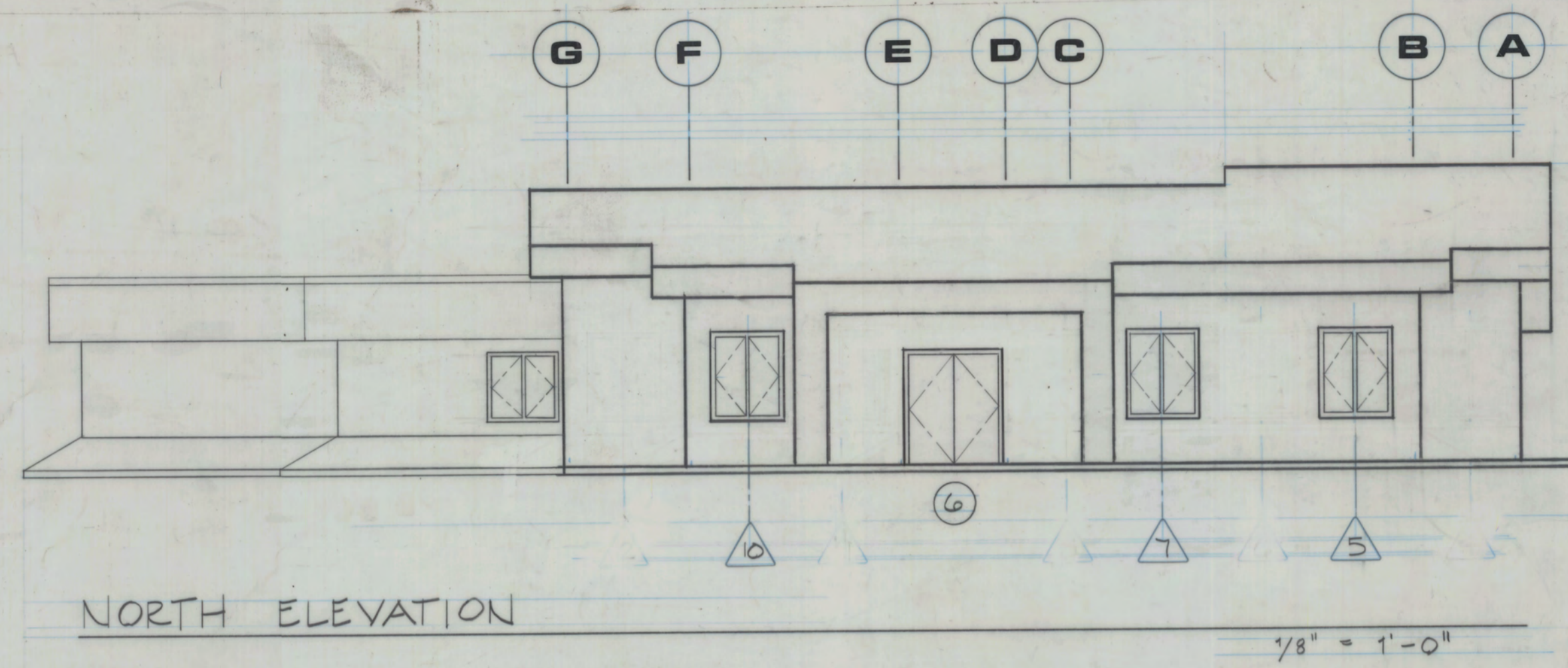
SCALE: 1/8" = 1'-0"

CITY OF FAIRBANKS
 SENIOR CITIZENS RECREATION
 & NUTRITION CENTER
 ADDITION

DRAWING NO.



THESE "AS-BUILT" DRAWINGS WERE COMPILED BY THE ARCHITECT/ENGINEER (A/E) BASED ON INFORMATION SUPPLIED BY THE CONTRACTOR. NO WARRANTY IS MADE OR IMPLIED BY THE A/E AS TO ACCURACY OR COMPLETENESS.



ENG7955.TIF

F8.0.043-2