



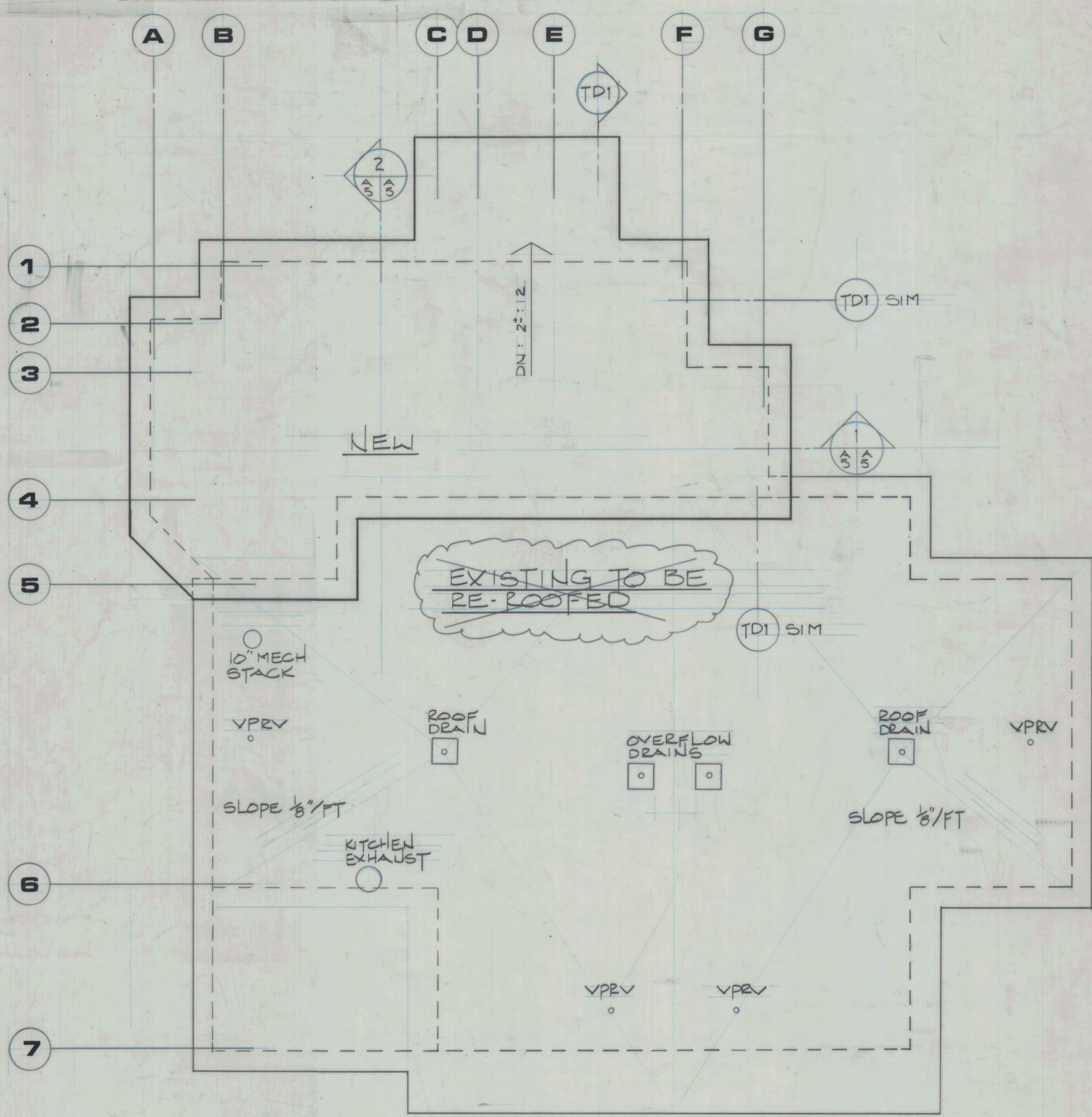
C. LEMARCHAND KENNEDY AND ASSOCIATES:
envirodesign
 ARCHITECTURE, PLANNING, ENERGY MANAGEMENT
 1327 KALAKAKET, FAIRBANKS, ALASKA 99701 (907) 479-3193

REVISIONS:
 PROJECT NO. 8602
 DATE: 6.30.84
 DRAWN: JMB, WH
 CHECKED:

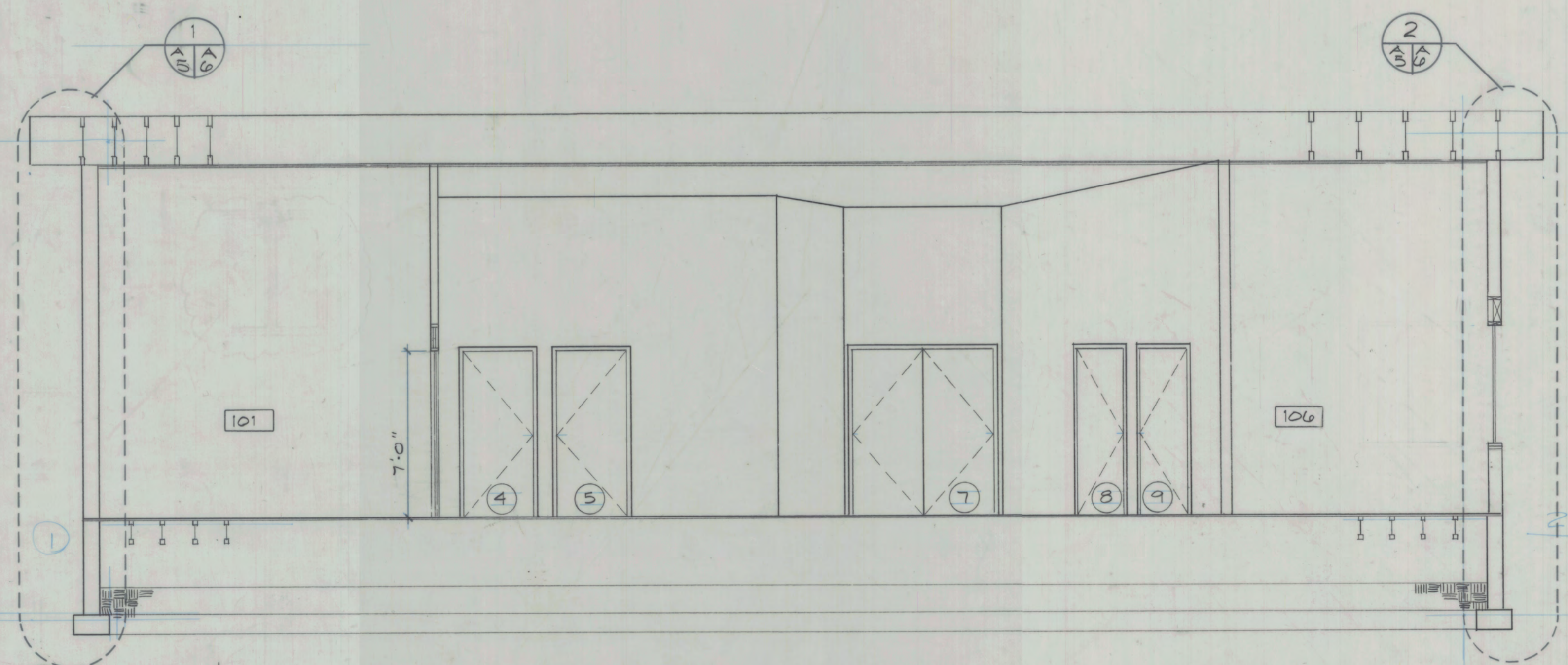
CONTENTS:
 ROOF PLAN & DETAILS
 SCALE: INDICATED

CITY OF FAIRBANKS
 SENIOR CITIZENS RECREATION
 & NUTRITION CENTER
 ADDITION

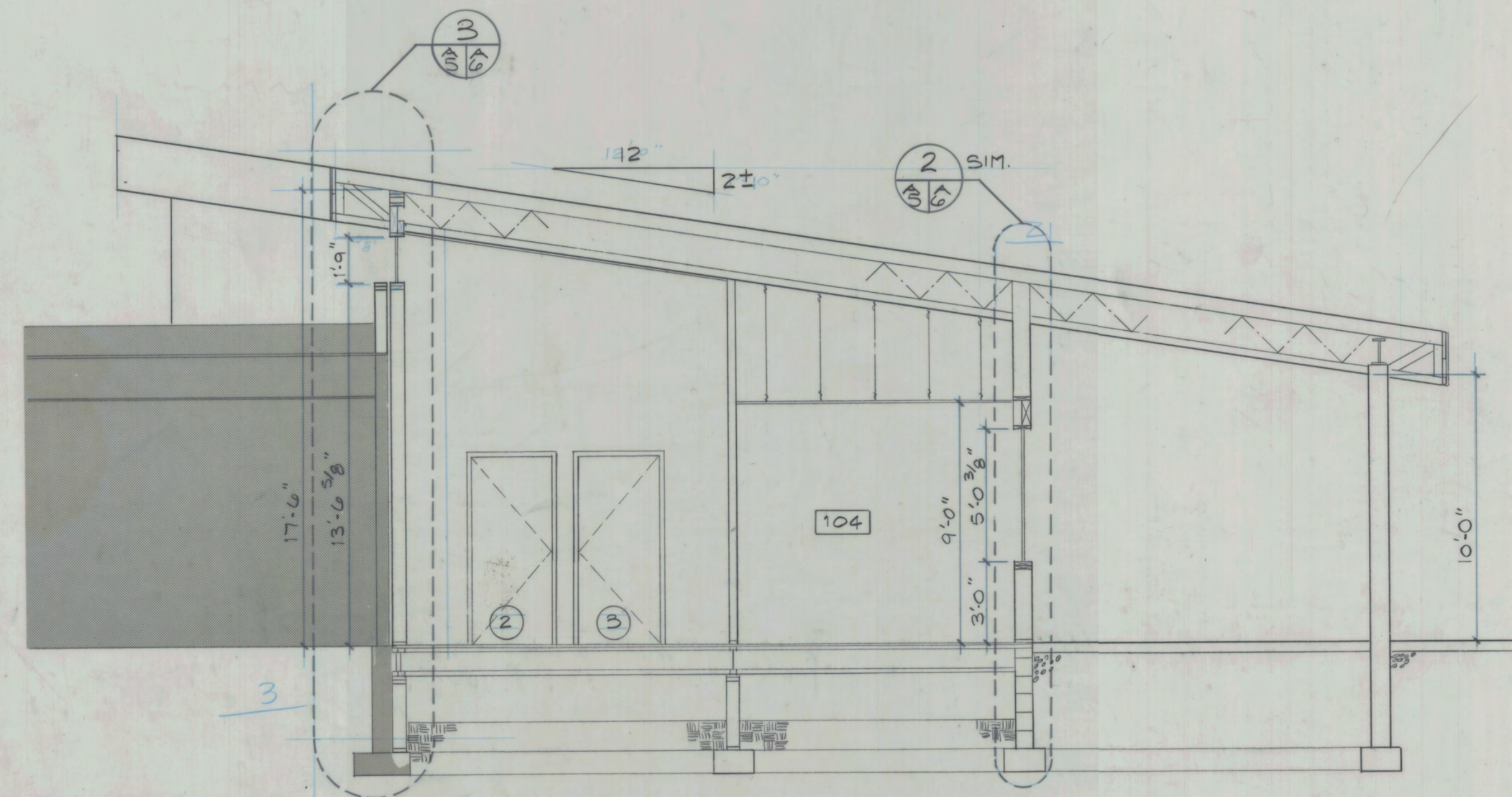
DRAWING NO. A5



ROOF PLAN
 1/8" = 1'-0"



SECTION 1
 1/4" = 1'-0"



SECTION 2
 1/4" = 1'-0"

THESE "AS-BUILT" DRAWINGS WERE COMPILED BY THE ARCHITECT/ENGINEER (A/E) BASED ON INFORMATION SUPPLIED BY THE CONTRACTOR. NO WARRANTY IS MADE OR IMPLIED BY THE A/E AS TO ACCURACY OR COMPLETENESS.