



C. LEMARCHAND KENNEDY AND ASSOCIATES:
enviro
 ARCHITECTURE, PLANNING, ENERGY MANAGEMENT
 1327 KALAKAKET, FAIRBANKS, ALASKA 99701 (907) 479-3193

REVISIONS:
 PROJECT NO. 8602
 DATE: 6.30.86
 DRAWN: JMB
 CHECKED:

CONTENTS:
 CONSTRUCTION SECTIONS

SCALE: 1/2" = 1'-0"

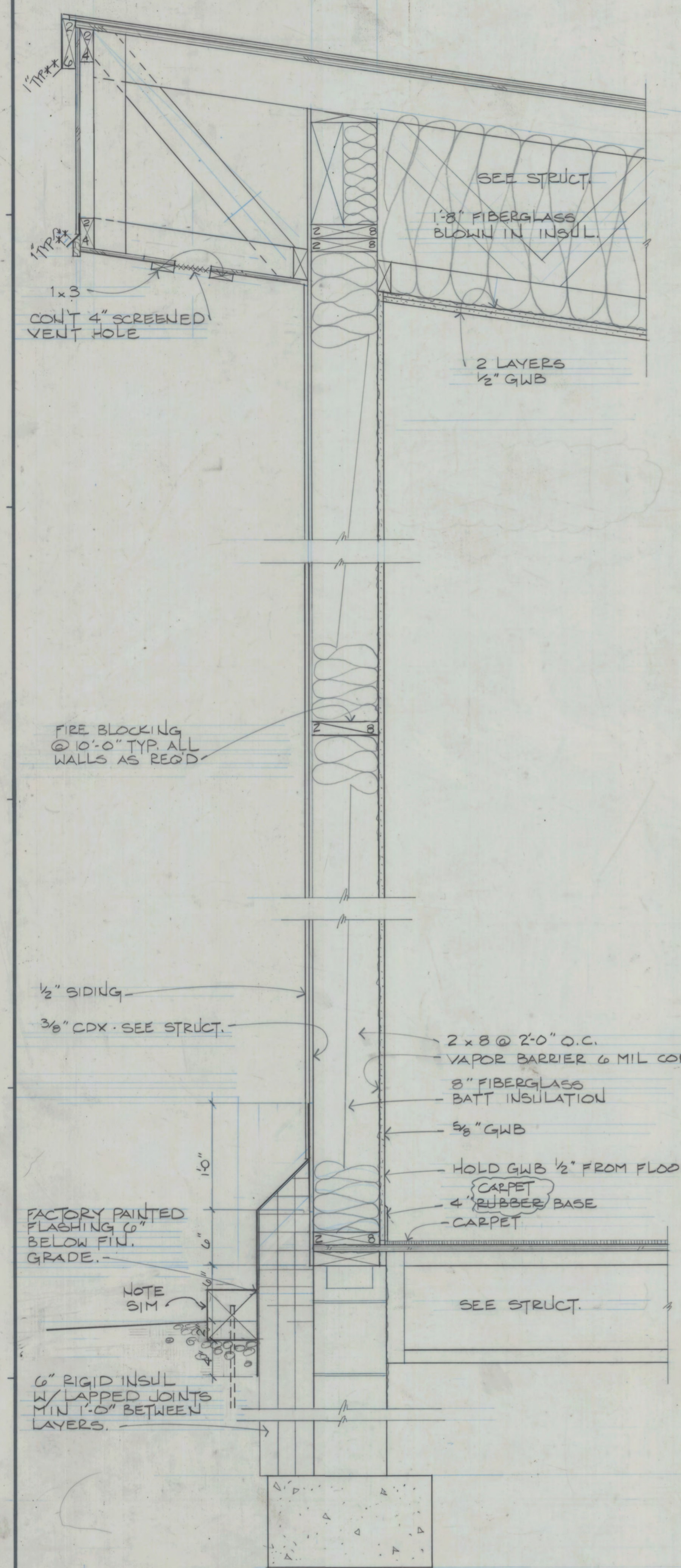
CITY OF FAIRBANKS
 SENIOR CITIZENS RECREATION & NUTRITION CENTER
 ADDITION

DRAWING NO.

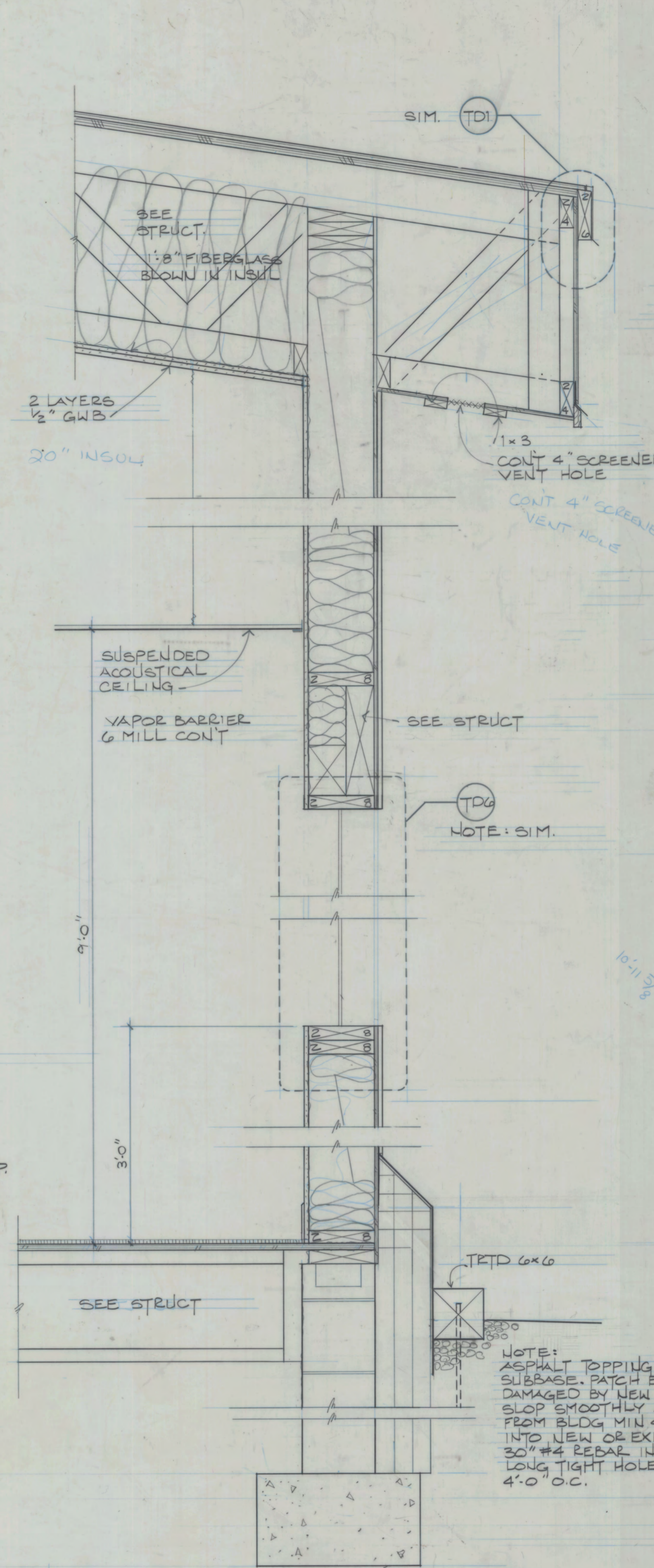
AG

THESE "AS-BUILT" DRAWINGS WERE COMPILED BY THE ARCHITECT/ENGINEER (A/E) BASED ON INFORMATION SUPPLIED BY THE CONTRACTOR. NO WARRANTY IS MADE OR IMPLIED BY THE A/E AS TO ACCURACY OR COMPLETENESS.

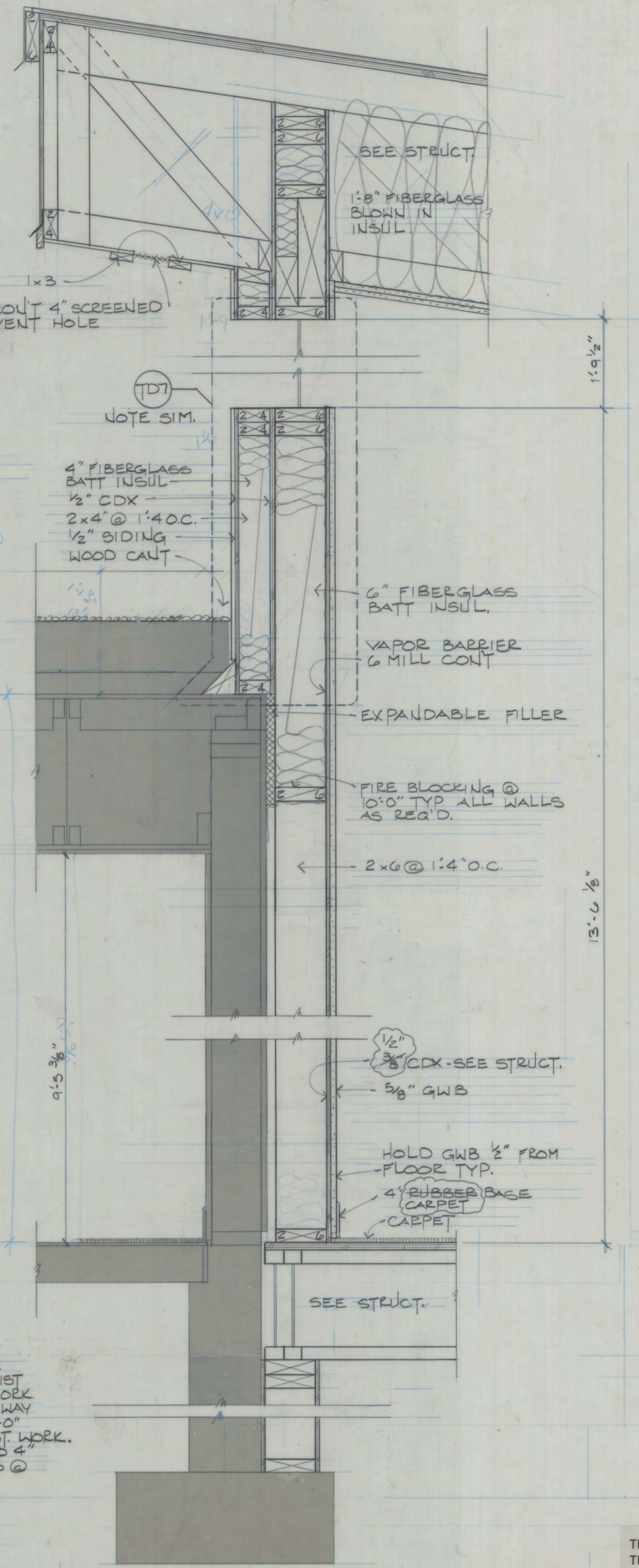
F-8-04041



1 SECTION @ GRID LINE 5
 ENG7953.TIF



2 SECTION @ GRID LINE 1



3 SECTION @ GRID LINE 4

Blow
 INSUL

08 602