



C. LEMARCHAND KENNEDY AND ASSOCIATES:
environdesign
 ARCHITECTURE, PLANNING, ENERGY MANAGEMENT
 1327 KALAKAKETI, FAIRBANKS, ALASKA 99701
 (907) 479-3193

REVISIONS:

PROJECT NO.
 DATE: JULY 2, 1986
 DRAWN: RJJ
 CHECKED: RBB

CONTENTS:
 LIGHTING PLAN

SCALE: AS SHOWN

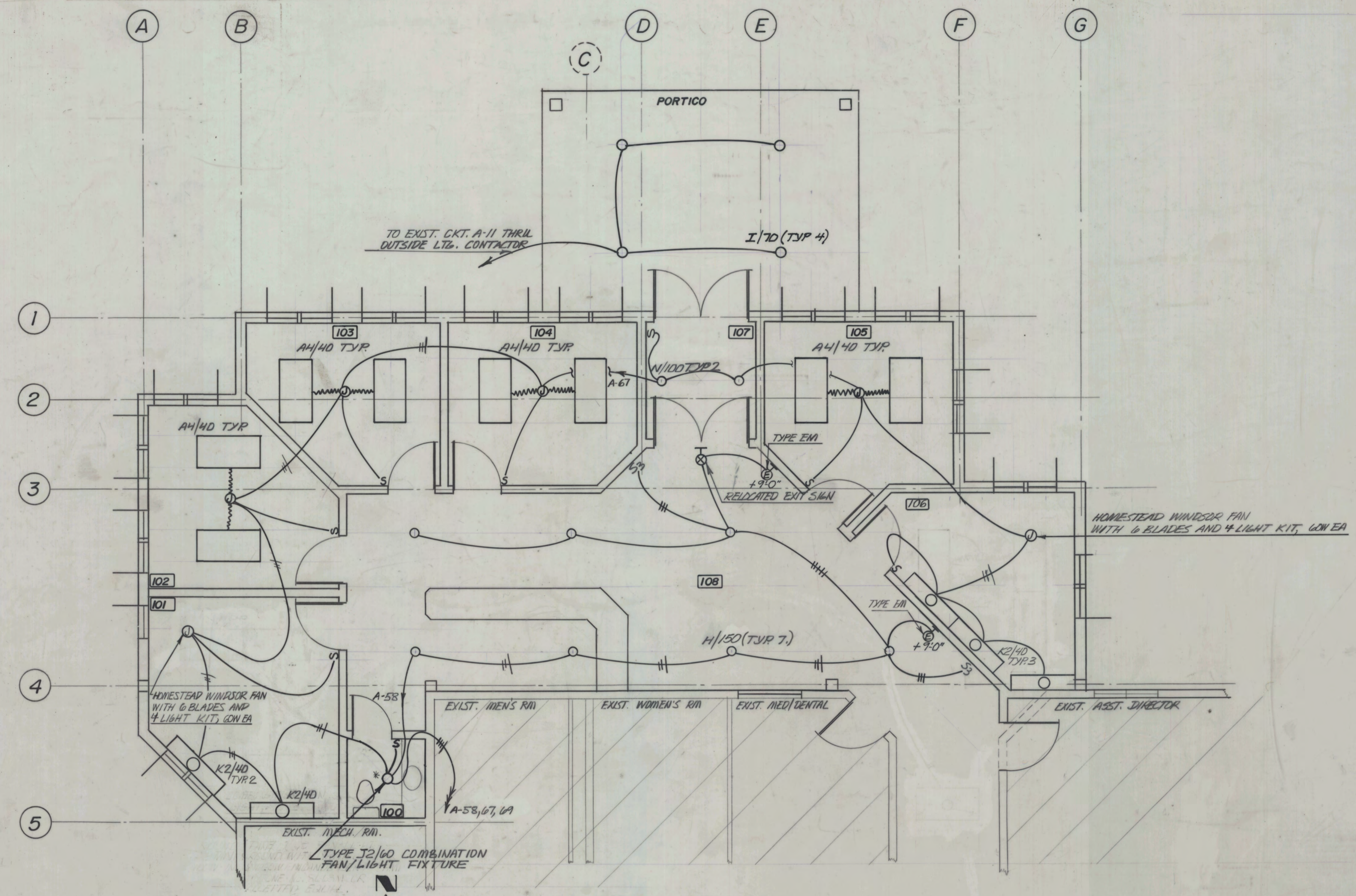
CITY OF FAIRBANKS
 SENIOR CITIZENS RECREATION
 AND NUTRITION CENTER ADDITION

DRAWING NO.

E1

SYMBOLS

- FLUORESCENT FIXTURE
- INCANDESCENT OR H.I.D. FIXTURE
- WALL MOUNTED INCANDESCENT OR H.I.D. FIXTURE
- WALL MOUNTED EXIT FIXTURE
- SURFACE MOUNTED, BATTERY OPERATED EMERGENCY FIXTURE
- WALL MOUNTED, BATTERY OPERATED EMERGENCY FIXTURE
- FLUORESCENT STRIP FIXTURE
- DARK ROOM SAFELIGHT FIXTURE
- WALL MOUNTED, BATTERY OPERATED EMERGENCY FIXTURE
- EXTERIOR POLE MOUNTED AREA LIGHTING FIXTURE
- FIXTURE TYPE, No. OF LAMPS / LAMP WATTS
- SINGLE POLE SWITCH
- TWO POLE SWITCH
- THREEWAY SWITCH
- FOURWAY SWITCH
- DIMMER SWITCH
- PILOT LIGHT SWITCH
- SWITCH FOR FIXTURES MARKED "a"
- KEY OPERATED SWITCH
- SINGLE RECEPTACLE
- DUPLEX RECEPTACLE
- SPLIT WIRE DUPLEX RECEPTACLE
- GROUND FAULT INTERRUPTER, DUPLEX RECEPTACLE (G.F.I.)
- DOUBLE DUPLEX RECEPTACLE
- DUPLEX RECEPTACLE WITH ISOLATED GROUND
- DOUBLE DUPLEX RECEPTACLE WITH ISOLATED GROUND
- WEATHERPROOF DUPLEX RECEPTACLE
- SPECIAL PURPOSE RECEPTACLE Nema Type As Shown
- STUB OUT FOR EQUIPMENT CONNECTION
- MULTI-OUTLET ASSEMBLY - Length, No. Of Outlets, As Noted. (M.O.A.)
- MULTI-OUTLET ASSEMBLY WITH ISOLATED GROUND
- FLOOR BOX MOUNTED DUPLEX RECEPTACLE, Outlet As Shown
- HEADBOLT HEATER OUTLET POST - No. Indicates No. Of Receptacles
- CLOCK
- TELEPHONE OUTLET
- INTERCOM SPEAKER; S₃ Indicates Silencing Switch
- TELEVISION OUTLET
- COMPUTER OUTLET
- PRINTER OUTLET
- JUNCTION BOX
- MOTOR
- DISCONNECT SWITCH
- COMBINATION MOTOR STARTER-DISCONNECT SWITCH
- EMERGENCY STOP SWITCH
- PUSHBUTTON SWITCH
- WIRING CONCEALED IN CEILING OR WALL (Except As Noted)
- WIRING CONCEALED IN OR UNDER FLOOR (Except As Noted)
- BRANCH CIRCUIT HOME RUN TO PANELBOARD - No. Of Arrows Indicates Number Of Circuit, Panel And Circuit Numbers As Shown.
- NUMBER OF CONDUCTORS IN RACEWAY (grounding conductors included) Absence of marks indicates two conductors. Grounding conductor indicated /
- MAIN DISTRIBUTION PANEL (M.D.P.)
- BRANCH PANEL
- RACEWAY UP
- RACEWAY DOWN
- FEEDER NUMBER (1)
- ROOM NUMBER (107)
- ABOVE FINISHED FLOOR
- UNLESS OTHERWISE NOTED
- ON CENTER
- MOUNTING HEIGHT ABOVE FINISHED FLOOR
- WEATHERPROOF
- FIRE ALARM SYSTEM MANUAL STATION HORN & STROBE
- NOT ALL SYMBOLS ARE NECESSARILY APPLICABLE



LIGHTING PLAN
 SCALE 1/4" = 1'-0"

FIXTURE SCHEDULE			
TYPE	MOUNTING	LAMP	REMARKS
I-0	RECESSED	F40W	
A4	PENDANT	F40WW	MT BOTTOM AT 10'-0" AFF FVR
A4	RECESSED	F40W	
A4	SURFACE	F40W	
A4	SURFACE	F40W	
EM	CEILING/WALL		Lamp by manufacturer.
G	RECESSED	100R/FL	
H	PENDANT	150A/99	KICHLER NO. 2DB1 Mount bottom of fixture at 10'-0"
I	RECESSED	LU70	
J2	RECESSED	60A/99	COMBINATION FAN/LIGHT UNIT, NUTONE No. 3672N OR ACCEPTED EQUAL.
K2	WALL	FA0WW	

RECORD DRAWING
 THIS RECORD DRAWING HAS BEEN PREPARED FROM INFORMATION FURNISHED BY THE CONSTRUCTION CONTRACTOR AND THE ACCURACY AND COMPLETENESS OF SUCH INFORMATION IS NOT GUARANTEED.
 LAKE & BOSNELL, CONSULTING ELECTRICAL ENGINEERS, INC.

