

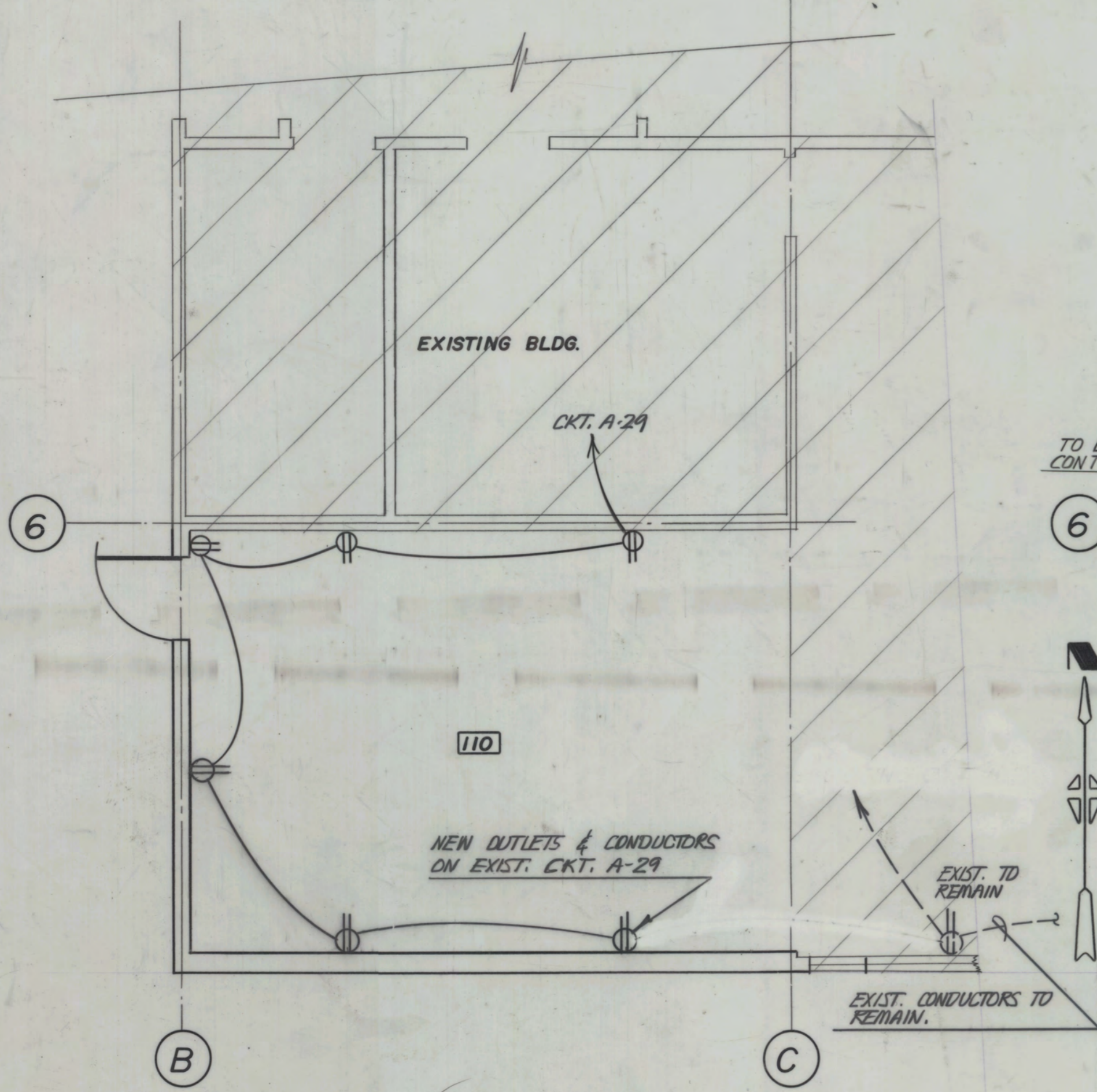
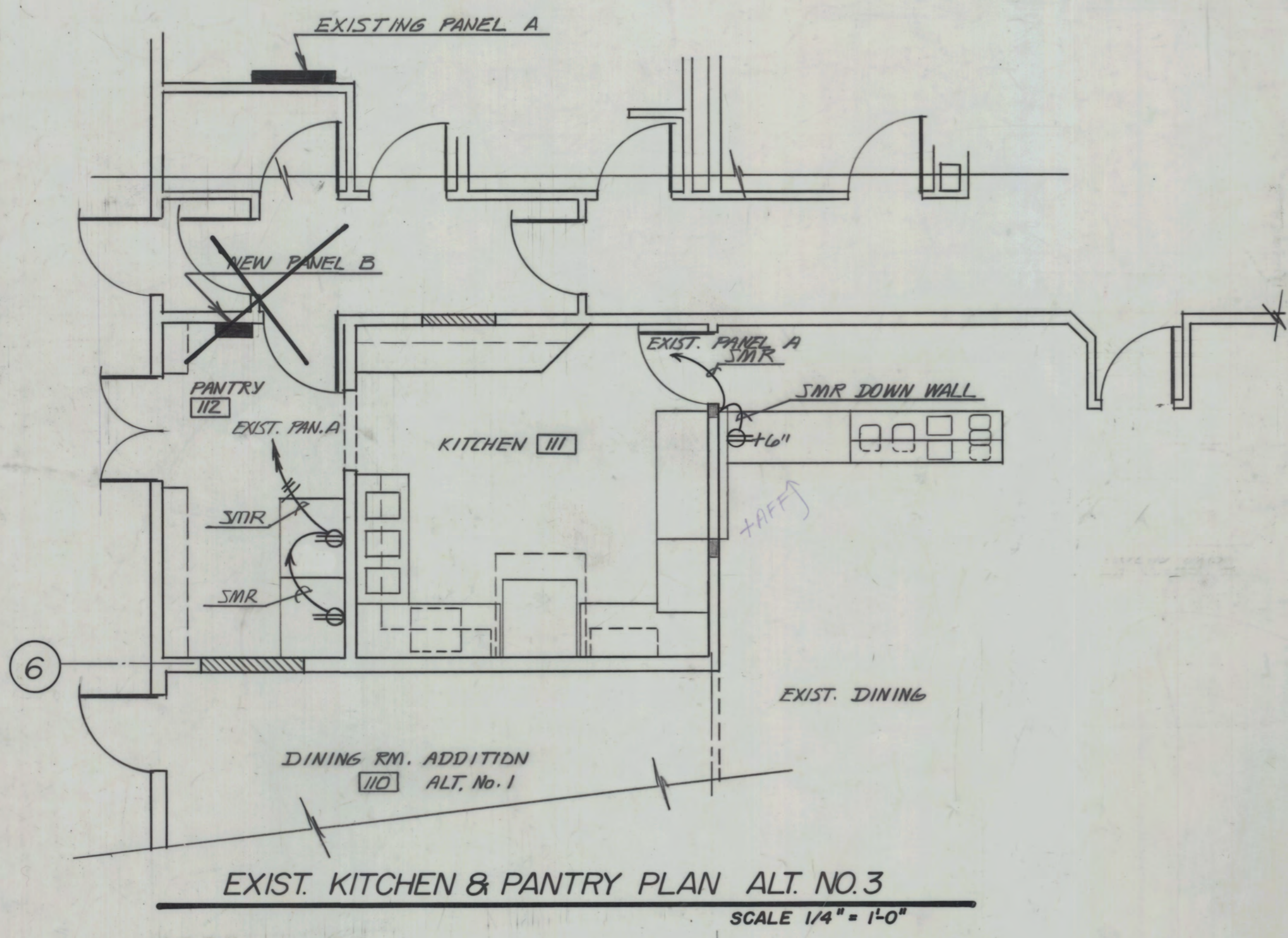
CKT. A-54 - WHIT. MTR.  
 CKT. A-56 - FANS RM 108  
 CKT. A-53 - LIGHTING RM 108  
 CKT. A-60 - FIRE ALARM CONTROL PANEL

EXISTING PANEL A		CKT. 120/208 V. 4 W 3 Ø MAINS 400A-MLO		10,000 A.I.C. SURFACE MTD.	
LOAD	VOLT - AMPERES ØA ØB ØC	CKT	ABC GKT	VOLT - AMPERES ØA ØB ØC	LOAD
EXISTING CIRCUITS 1	EXISTING	1		2	EXISTING CIRCUITS 1
THROUGH 65		65		68	THROUGH 68
LIGHTING - ROOMS 105, 106, 107	1200	67		70	WEATHERPROOF OUTLET - NORTH WALL
LIGHTING - ROOMS 100, 101, 102, 103, 104	1850	69		72	CONVENIENCE OUTLETS - ROOM 104, 103 & 108
LIGHTING - RM. 110	1600	71		74	CONVENIENCE OUTLETS - ROOM 103, 102
LIGHTING - RM. 110	1696	73		76	CONVENIENCE OUTLET - ROOM 102
CONVENIENCE OUTLETS - ROOM 106, 108	1080	75		78	CONVENIENCE OUTLET - ROOM 101
CONVENIENCE OUTLETS - ROOM 105	1080	77		80	XEROX MACHINE OUTLET - ROOM 101
ISOLATED GROUND OUTLETS - ROOM 101	720	79		82	CURTAIN MOTORS - RM. 110
M.O.A. - ROOM 108	1800	81		84	MULTI-OUTLET ASSEMBLY - RM. 110
CONVENIENCE OUTLETS - ROOM 108, 100	900	83			

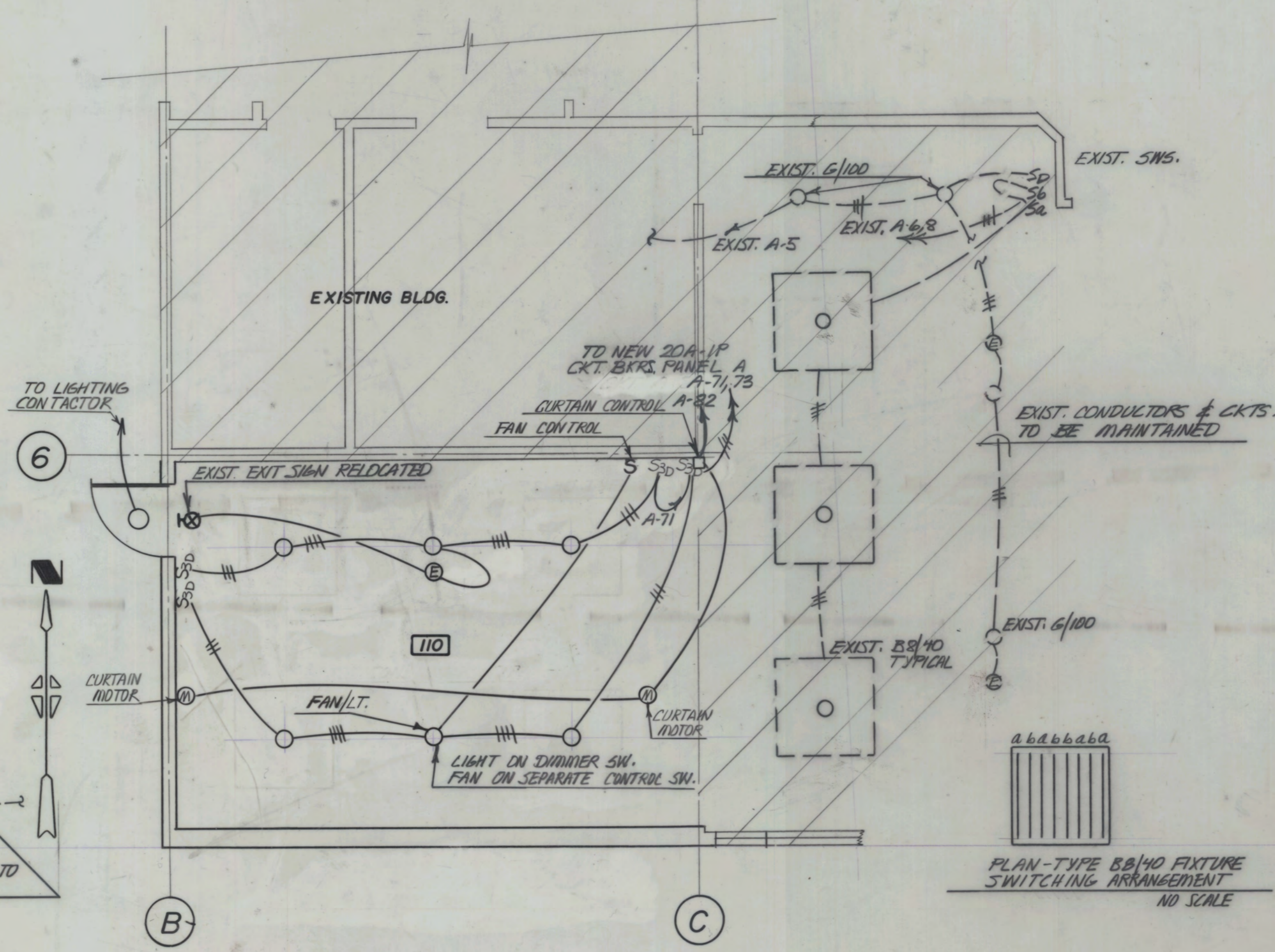
\* SEE NOTE 4, ALTERNATE NO. 3

(DID NOT HAVE A PANEL B)

ALTERNATE NO. 3		CKT. 120/208 V. 4 W 3 Ø MAINS 100A/MLO		10,000 A.I.C. SURFACE MTD.	
LOAD	VOLT - AMPERES ØA ØB ØC	CKT	ABC GKT	VOLT - AMPERES ØA ØB ØC	LOAD
ISOLATED GROUND OUTLETS - ROOM 101	720	1		2	STEAM TABLE IN BUFFET
M.O.A. - ROOM 108	1800	3		4	NEW FREEZER - ROOM 112
CONVENIENCE OUTLETS - ROOMS 100 & 108	900	5		6	NEW REFRIGERATOR - ROOM 112
SPARE	1000	7		8	SPARE
		9		10	



DINING RM., KITCHEN POWER PLAN  
 SCALE 1/4" = 1'-0"



DINING RM., KITCHEN LIGHTING PLAN  
 SCALE 1/4" = 1'-0"

NOTES

- TV OUTLET TO CONSIST OF A 4S BOX WITH SINGLE GANG RING AND BLANK PLATE. INSTALL ONE 3/4 INCH EMT FROM BOX TO ACCESSIBLE POINT IN ROOF TRUSSES. INSTALL PULL CORD AND CLEARLY MARK TERMINATION POINT ON THE AS-BUILT DRAWINGS.
- WIRING IS TO BE CONCEALED. WHERE WIRING FROM ROOM 110 CROSSES THE KITCHEN AND CORRIDOR TO THE MECHANICAL ROOM (PANEL A) WIRE IN SURFACE EMT IN THE KITCHEN AND IN SURFACE METAL RACEWAY IN THE CORRIDOR.
- WIRE A MAXIMUM OF THREE TELEPHONE OUTLETS IN 3/4 INCH EMT TO THE TELEPHONE CABINET LOCATED IN THE JANITORS CLOSET ADJACENT TO THE MECHANICAL. INSTALL A PULL CORD IN EACH RUN.
- UNDER ALTERNATE NO. 3, PROVIDE AND INSTALL A 60 AMP - 3 POLE CIRCUIT IN EXISTING PANEL A IN BASIC BID CIRCUIT POSITIONS A-79, 81, 83 TO FEED NEW PANEL B. FEED NEW PANEL B WITH 4 NO. 4 THWN IN 1 INCH RSC. RE-CIRCUIT BASIC BID CIRCUITS A-79, 81, 83 TO CIRCUITS B-1, 3, 5 IN PANEL B. ADD CIRCUITS B-2, 4, 6 AS SHOWN ON THE DRAWINGS.

RECORD DRAWING  
 THIS RECORD DRAWING HAS BEEN PREPARED FROM INFORMATION FURNISHED BY THE CONSTRUCTION CONTRACTOR AND THE ACCURACY AND COMPLETENESS OF SUCH INFORMATION IS NOT GUARANTEED.  
 LAKE & BOSWELL, CONSULTING ELECTRICAL ENGINEERS, INC.



C. LEMARCHAND KENNEDY AND ASSOCIATES:  
**enviro**ndesign  
 ARCHITECTURE, PLANNING, ENERGY MANAGEMENT  
 1327 KALAKAKET, FAIRBANKS, ALASKA 99701 (907) 479-3193

REVISIONS:

PROJECT NO.

DATE: JULY 2, 1986  
 DRAWN: RJA  
 CHECKED: RBB

CONTENTS:  
 LIGHTING & POWER PLANS - DINING RM.

SCALE: AS SHOWN



DRAWING NO.

E3