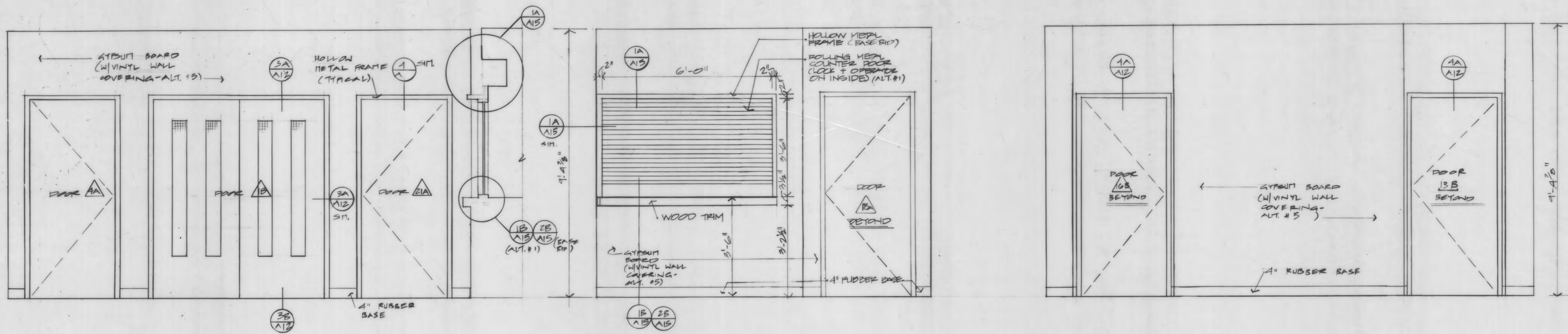


**JANET MATHESON ARCHITECT**

P.O. BOX 81038  
FAIRBANKS,  
ALASKA 99708  
(907) 452-4640

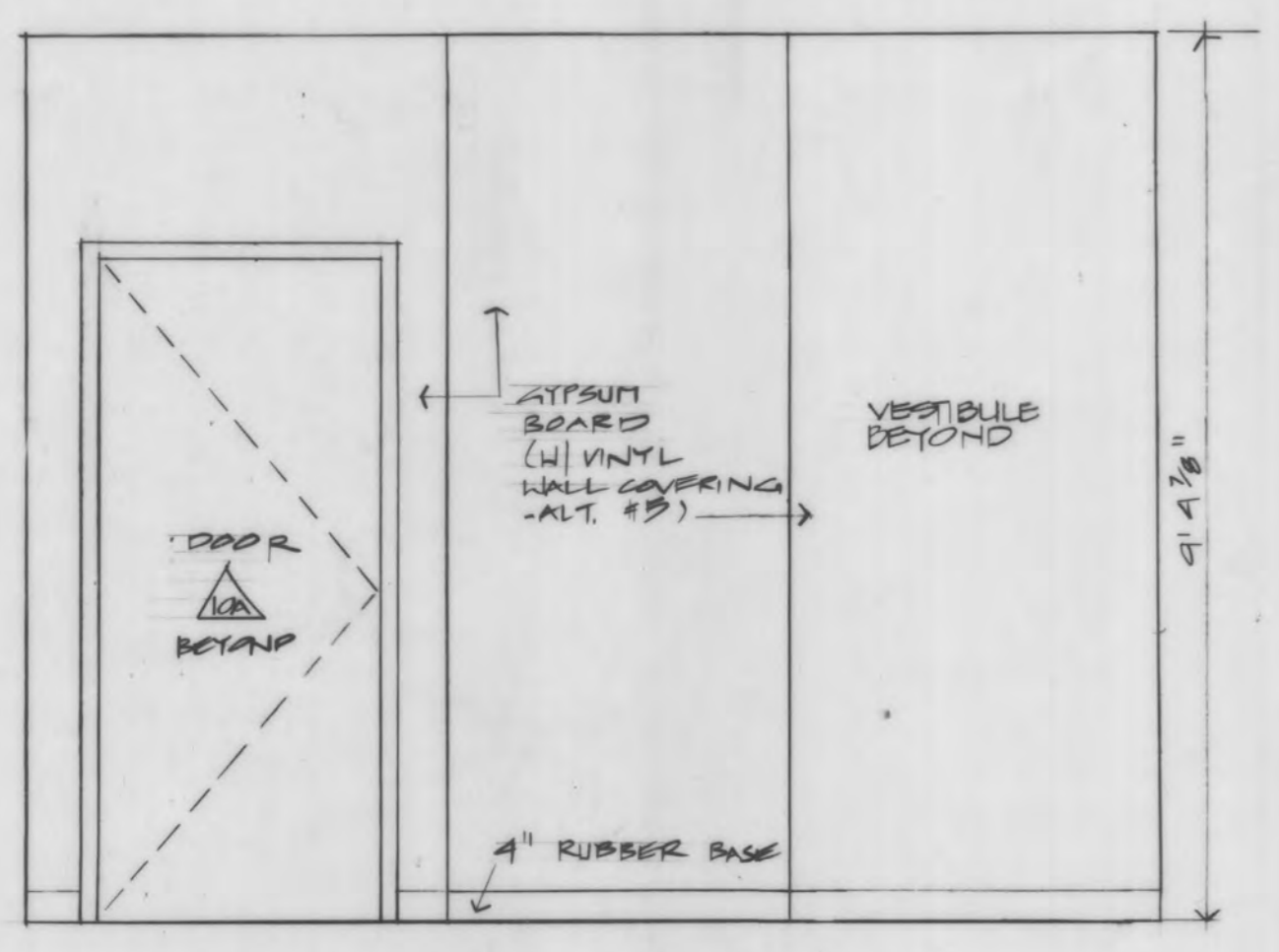
**CITY OF FAIRBANKS  
SENIOR CITIZENS RECREATION  
& NUTRITION CENTER**



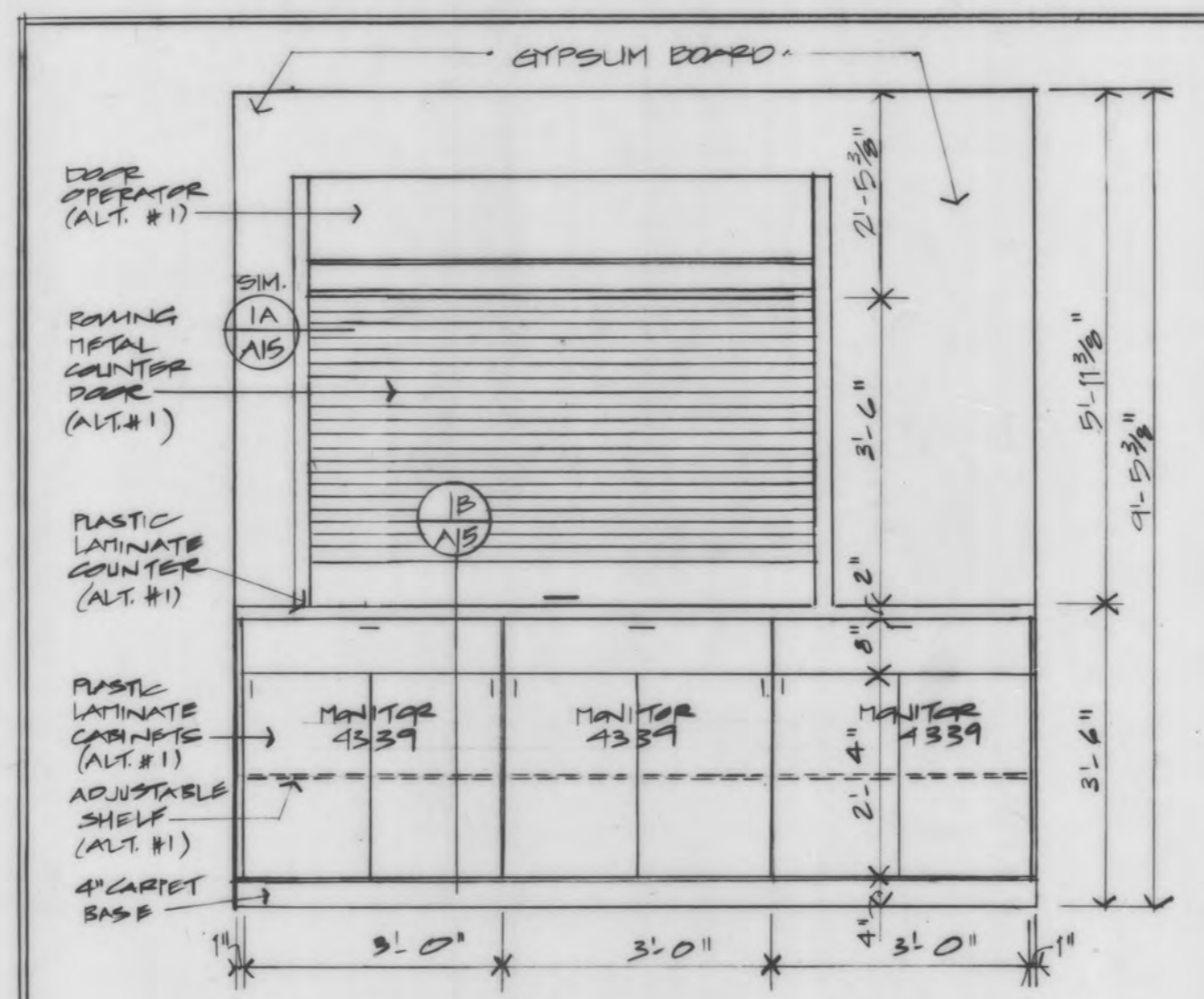
1 NORTH ELEVATION - COURT  
SCALE: 1/2" = 1'-0"

2 EAST ELEVATION - COURT  
SCALE: 1/2" = 1'-0"

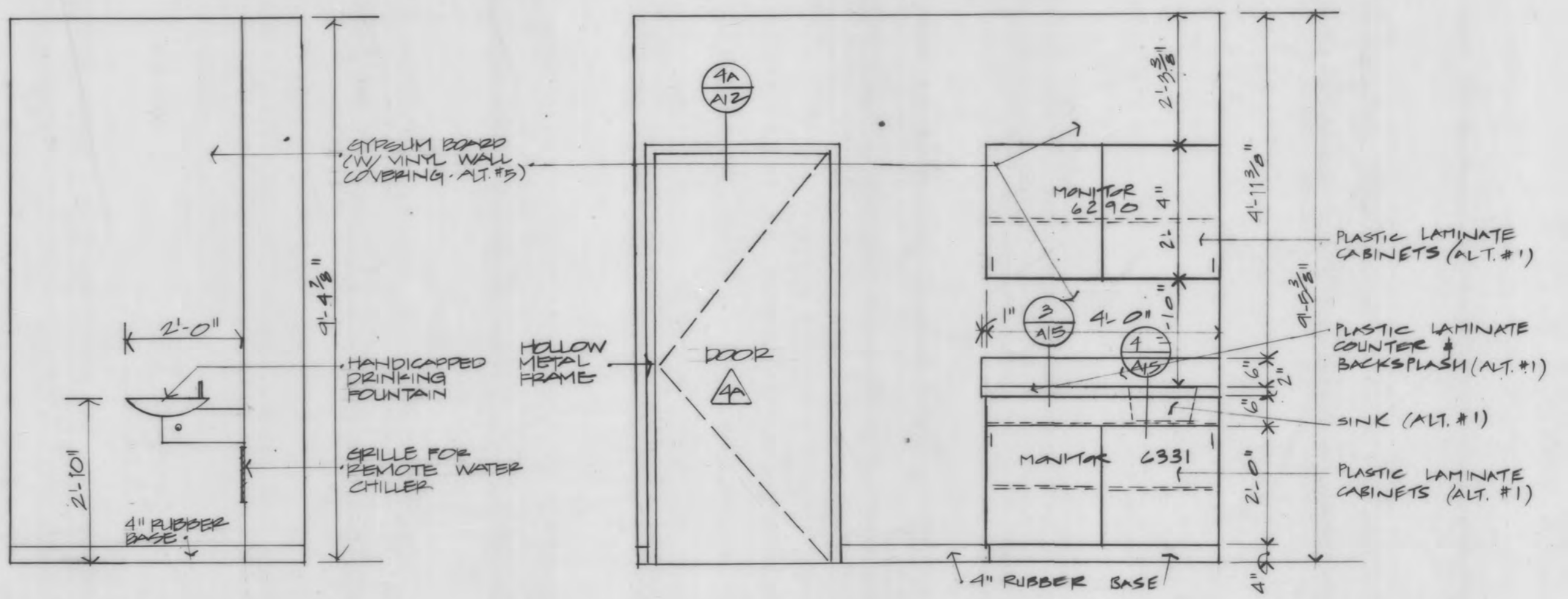
3 SOUTH ELEVATION - COURT  
SCALE: 1/2" = 1'-0"



4 WEST ELEVATION - COURT  
SCALE: 1/2" = 1'-0"

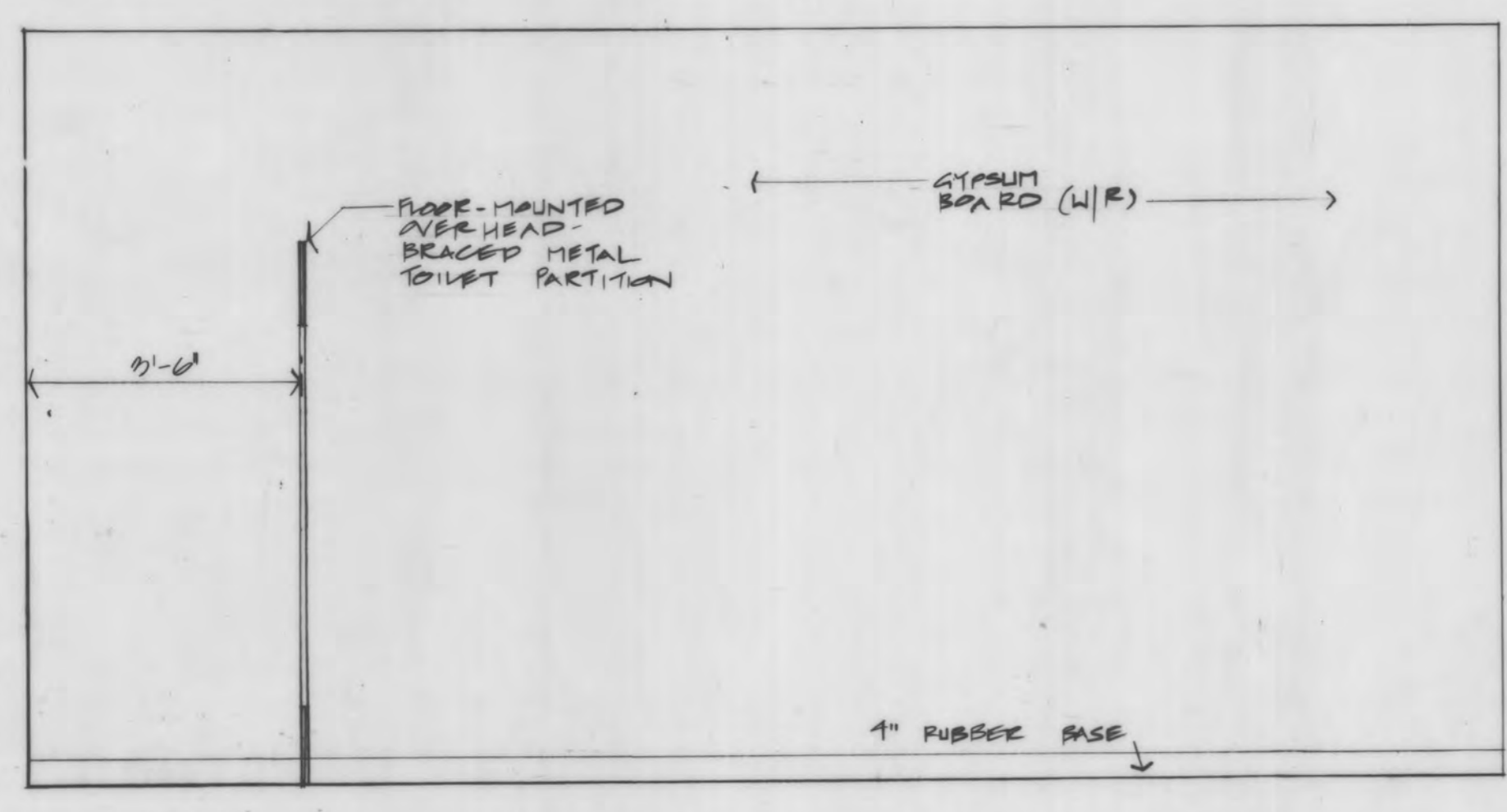


5 WEST ELEVATION - SECRETARY  
SCALE: 1/2" = 1'-0"

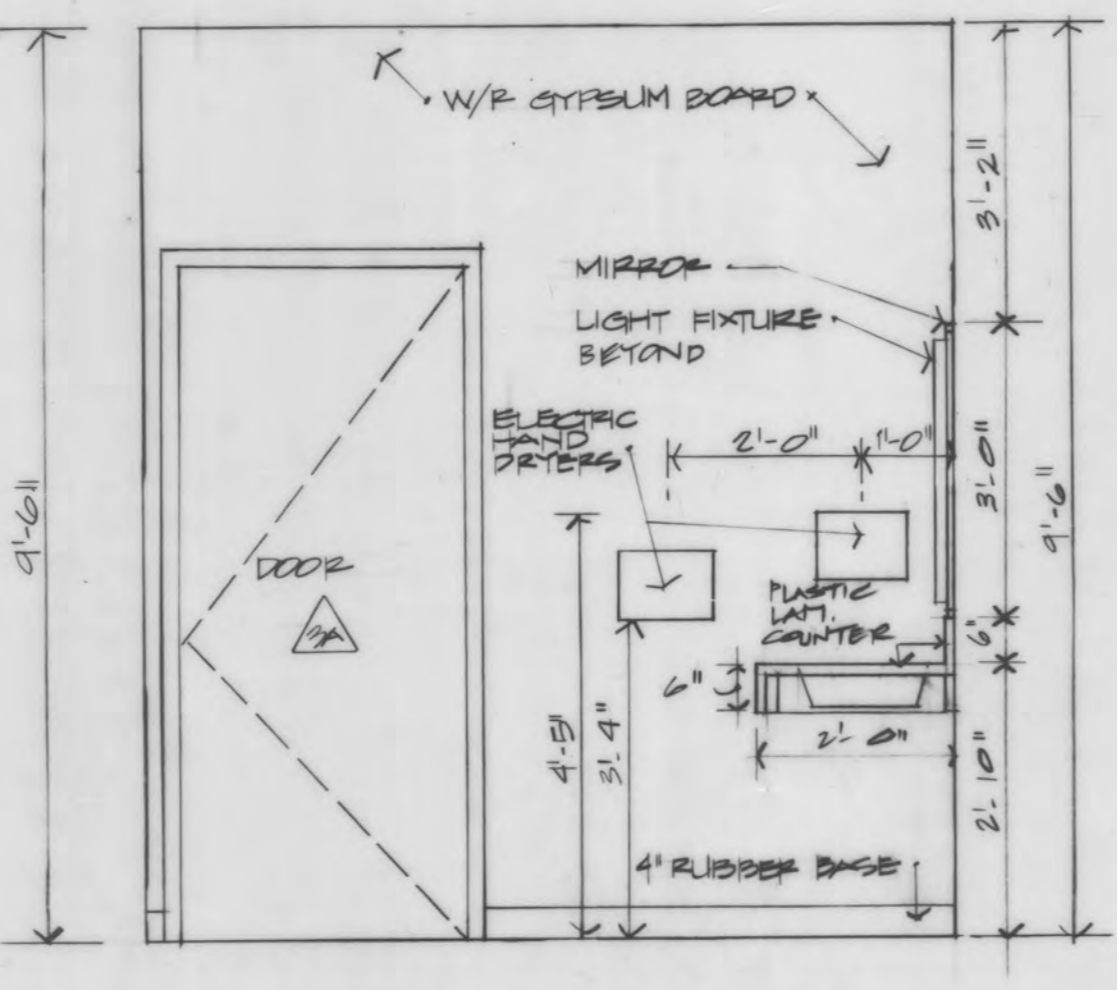


6 SOUTH ELEVATION - D.F. ALCOVE  
SCALE: 1/2" = 1'-0"

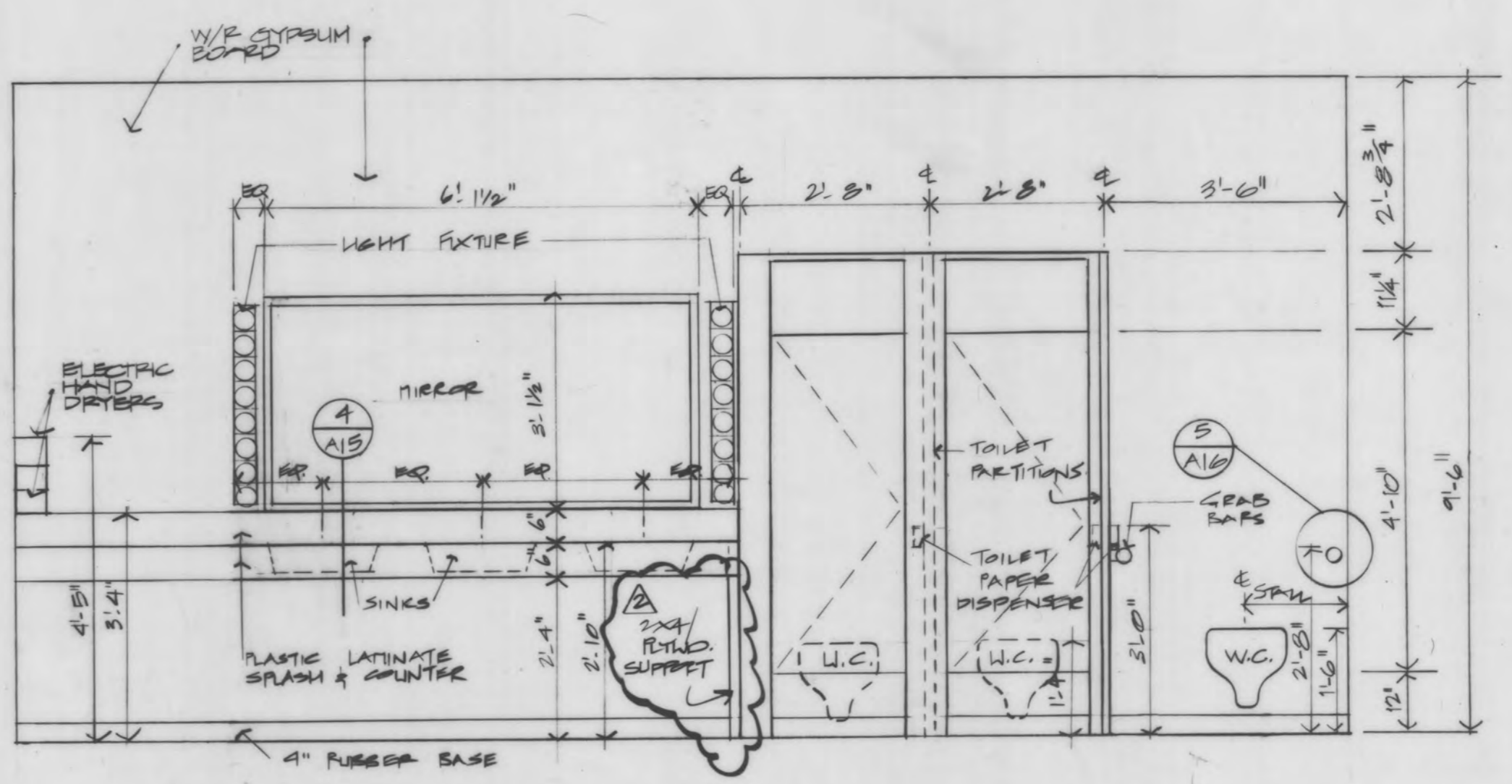
7 SOUTH ELEVATION - MEDICAL/DENTAL  
SCALE: 1/2" = 1'-0"



8 EAST ELEVATION - WOMEN  
SCALE: 1/2" = 1'-0"



9 SOUTH ELEVATION - WOMEN  
SCALE: 1/2" = 1'-0"



10 WEST ELEVATION - WOMEN  
SCALE: 1/2" = 1'-0"

CONSTRUCTION CHANGES

INTERIOR  
ELEVATIONS  
REBID

SHT #

**A9**



DWN JM CKD  
DATE: 2-22-80 PROJ: 791  
C6.0171

MICROFILMED  
DATE: 12/83  
MICROFILM NUMBER: