

JANET MATHESON ARCHITECT
 P.O. BOX 81038
 FAIRBANKS, ALASKA 99708
 (907) 452-4640

**CITY OF FAIRBANKS
 SENIOR CITIZENS RECREATION
 & NUTRITION CENTER**

SYMBOLS

- 2'x2' OR 4'x4' FLUORESCENT FIXTURE
- 2'x4' FLUORESCENT FIXTURE
- WITH WAVE 2'x4' FLUORESCENT FIXTURE
- WITH WAVE CEILING MOUNTED INCANDESCENT OR H.I.D. FIXTURE
- WITH WAVE WALL MOUNTED INCANDESCENT OR H.I.D. FIXTURE
- WITH WAVE TYPE F BATTERY OPERATED EMERGENCY FIXTURE
- WITH WAVE TYPE F WALL MOUNTED BATTERY OPERATED EMERGENCY FIXTURE
- WITH WAVE WALL MOUNTED EXIT LIGHT
- SWITCH
- WITH WAVE THREEWAY SWITCH
- WITH WAVE DIMMER SWITCH
- WITH WAVE SWITCH FOR FIXTURES OR LAMPS MARKED "D"
- WITH WAVE TWO POLE SWITCH
- WITH WAVE CONVENIENCE OUTLET
- WITH WAVE WEATHERPROOF CONVENIENCE OUTLET
- WITH WAVE HEADBOLT HEATER OUTLET - SPLIT WIRED, NEMA 5-20R
- WITH WAVE PENDANT MOUNTED HEADBOLT HEATER OUTLET
- WITH WAVE EQUIPMENT CONNECTION
- WITH WAVE MOTOR
- WITH WAVE FLOOR BOX MOUNTED CONVENIENCE OUTLET
- WITH WAVE TELEPHONE OUTLET
- WITH WAVE PANEL
- WITH WAVE HEADBOLT HEATER OUTLET POST
- WITH WAVE DISCONNECT SWITCH (MOTOR STARTING SWITCH)
- WITH WAVE TYPE O AREA LIGHT (ADDITIVE ALT. NO. 3)
- WITH WAVE HEADBOLT HEATER OUTLET - SINGLE NEMA 5-20R
- WITH WAVE WIRING CONCEALED IN OR UNDER FLOOR
- WITH WAVE WIRING CONCEALED IN CEILING OR WALL
- WITH WAVE INDICATES CIRCUIT WITH GROUND CONDUCTOR
- WITH WAVE JUNCTION BOX
- WITH WAVE THERMOSTAT

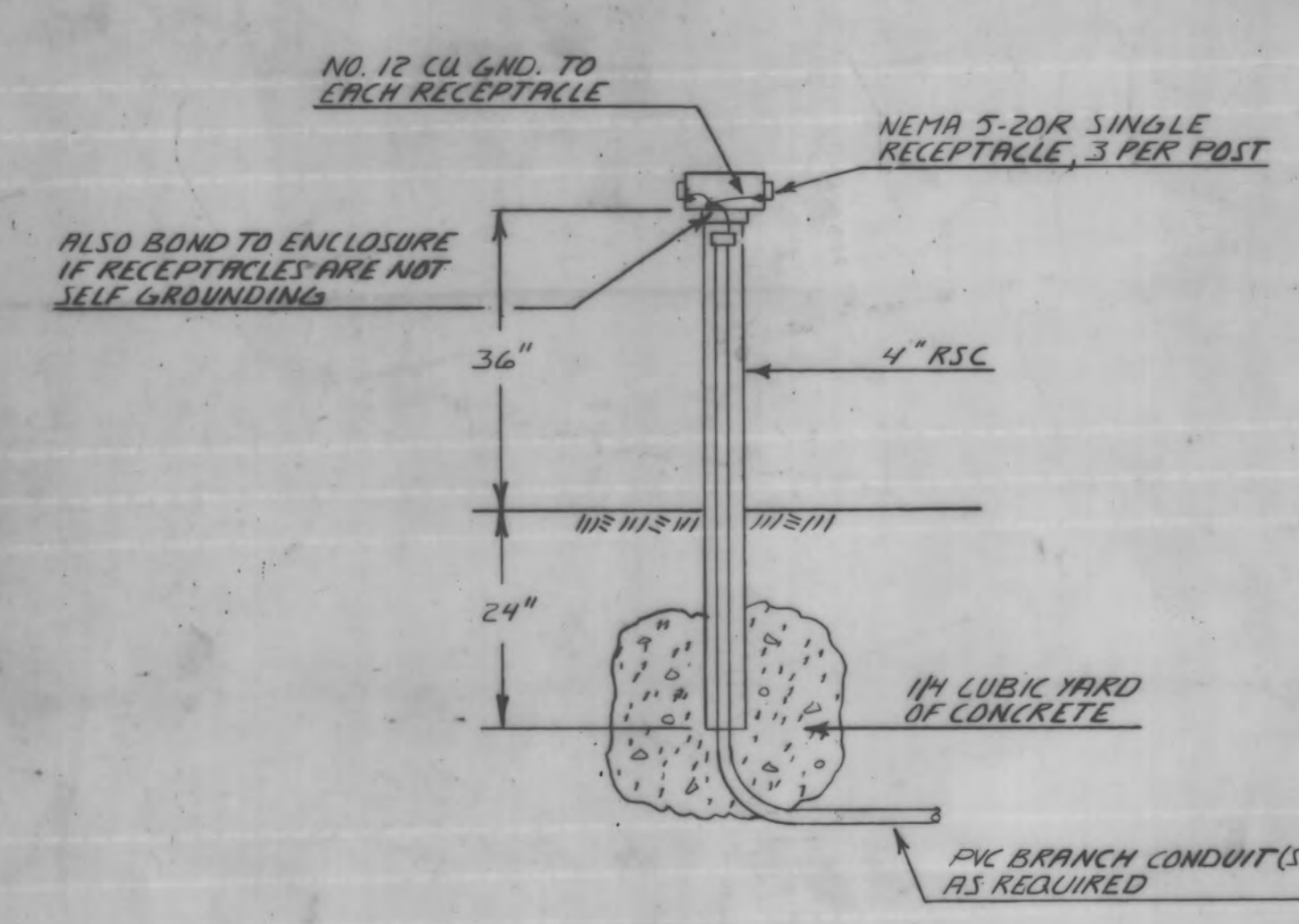
MOUNTING HEIGHTS

| | |
|---------------------------|-------|
| SWITCHES | 4'-0" |
| CONVENIENCE OUTLETS | 2'-0" |
| TELEPHONE OUTLETS | 2'-0" |
| DISCONNECT SWITCHES (TOP) | 5'-6" |
| PANELS (TOP) | 6'-6" |

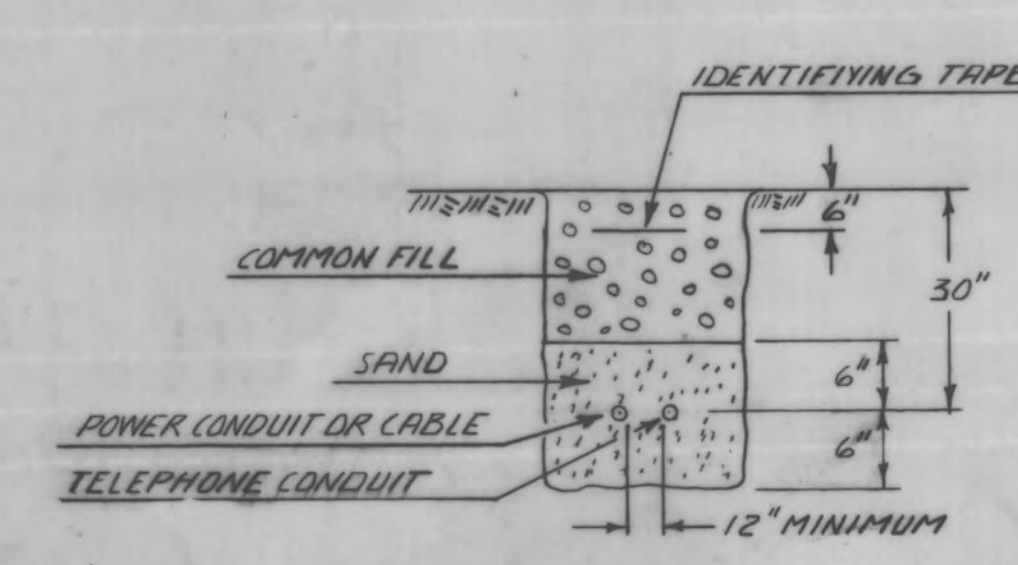
MOUNTING HEIGHTS ARE TO CENTER UNLESS OTHERWISE NOTED.
 THESE MOUNTING HEIGHTS SHALL PREVAIL UNLESS OTHERWISE NOTED ON THE DRAWINGS.
 OUTLETS ABOVE COUNTER TOPS SHALL BE MOUNTED HORIZONTALLY.

NOTES

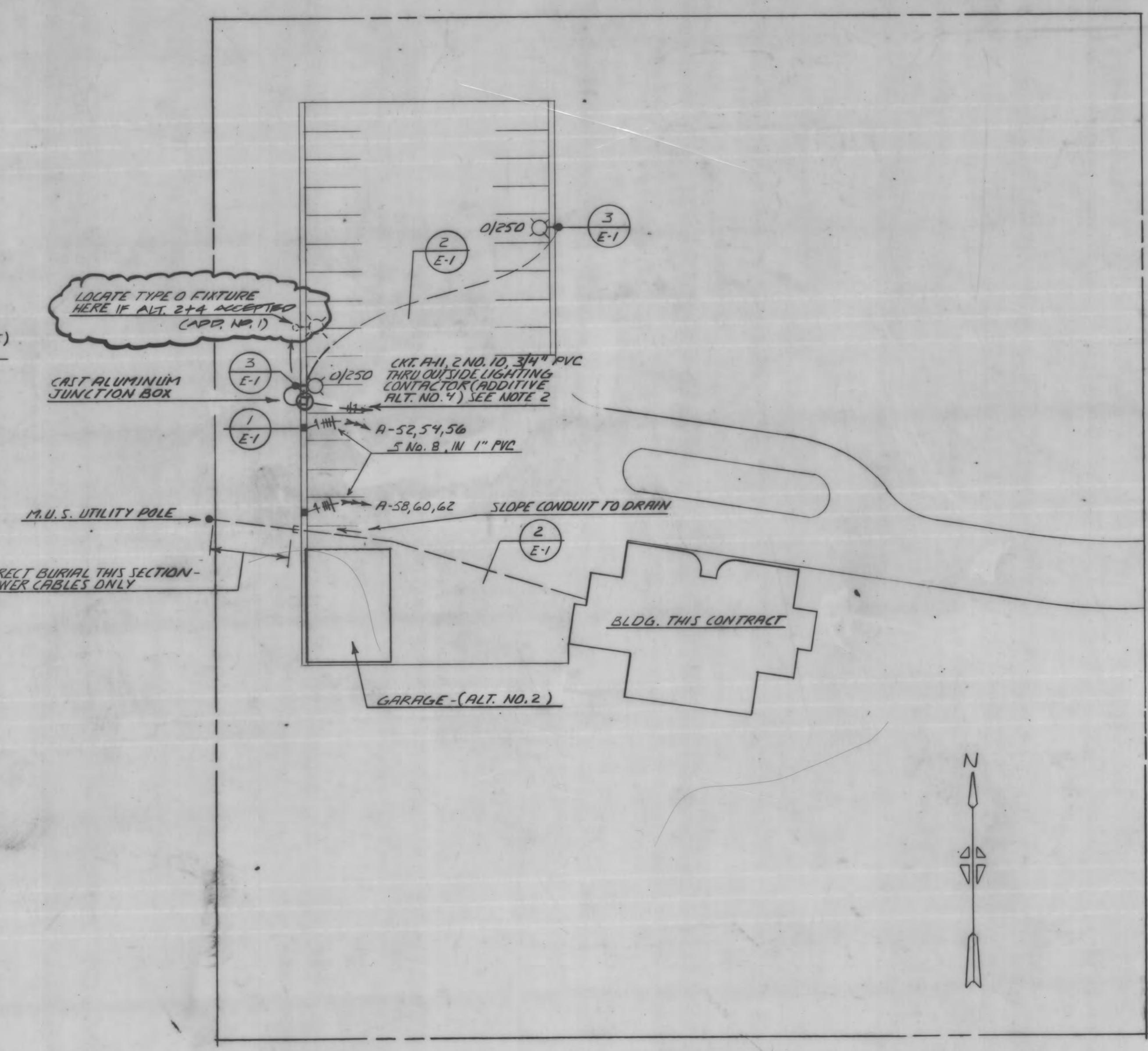
1. IF ADDITIVE ALTERNATE NO. 2 IS NOT CONSTRUCTED, STUB OUT ONE 1-1/4 INCH CONDUIT FROM PANEL A TO THREE FEET OUTSIDE BUILDING WALL, THIRTY INCHES BELOW GRADE AND CAP FOR FUTURE GARAGE PANEL. LOCATE ACCURATELY ON AS-BUILT DRAWINGS.
2. IF ADDITIVE ALTERNATE NO. 4 IS NOT ACCEPTED, STUB OUT ONE 3/4 INCH CONDUIT FROM PANEL A TO THREE FEET OUTSIDE BUILDING WALL, THIRTY INCHES BELOW GRADE AND CAP, FOR FUTURE AREA LIGHTS - TYPE O FIXTURES. LOCATE ACCURATELY ON AS-BUILT DRAWINGS. IF ALT. 2 NOT ACCEPTED STUB 2-1/2" CONDUITS OUT FOR FUTURE HEADBOLT HEATER OUTLETS (APP. #1).
3. IF ADDITIVE ALTERNATE NO. 1 IS NOT ACCEPTED, INSTALL ALL WIRING, DEVICES, ETC. FOR FUTURE CONNECTION OF TYPE J2/B FIXTURES.
4. CONNECT ALL TYPE E2 AND TYPE F FIXTURES TO UNSWITCHED PHASE CONDUCTORS.
5. VERIFY SIZE AND LOCATION OF ALL MECHANICAL EQUIPMENT WITH THE MECHANICAL CONTRACTOR.
6. WIRE BRANCH PANELS TO RESULT IN BALANCED LOADING.
7. WIRING IN THIS BUILDING SHALL BE WITH TYPE NM NON-METALLIC SHEATHED CABLE, INSTALLED IN STRICT CONFORMANCE WITH NEC ARTICLE 336.
8. UNDER BASIC BID, HEADBOLT HEATER CIRCUITS A-47, -49, -51, & -53 ARE TO BE RUN THROUGH THE HEADBOLT HEATER CONDUIT (APP. #1)



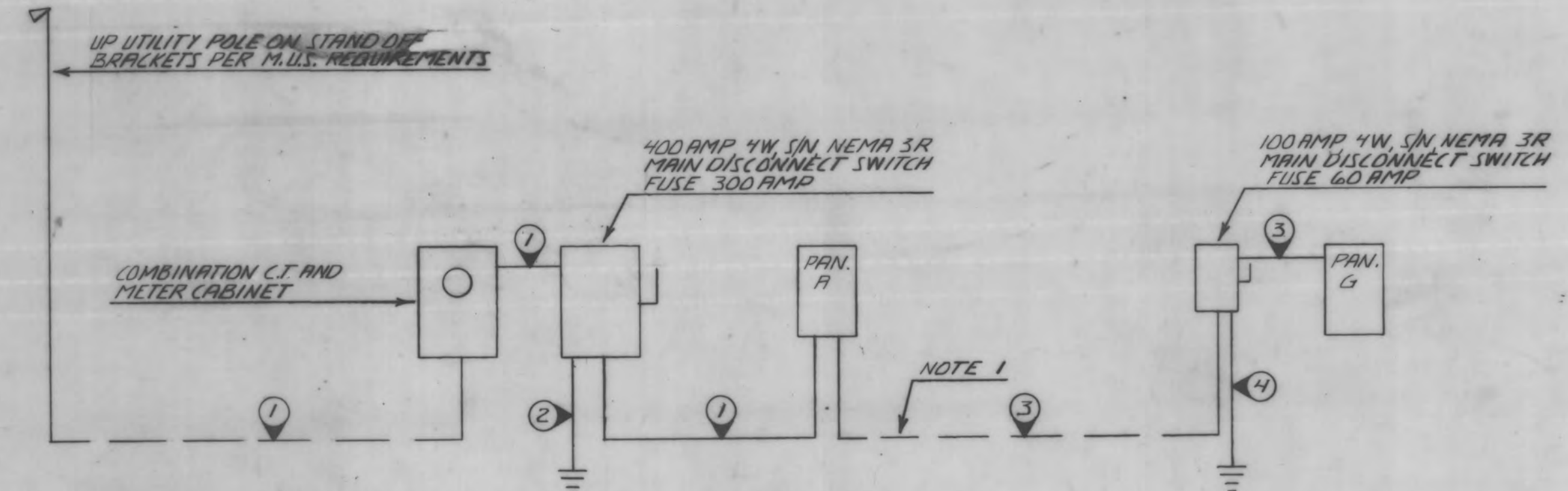
1 HEADBOLT HEATER POST DETAIL
 NO SCALE (ALTERNATE NO. 4)
 E-1



2 UNDERGROUND CONDUIT OR CABLE
 NO SCALE
 E-1



3 SITE PLAN
 SCALE 1/4" = 30'
 E-1

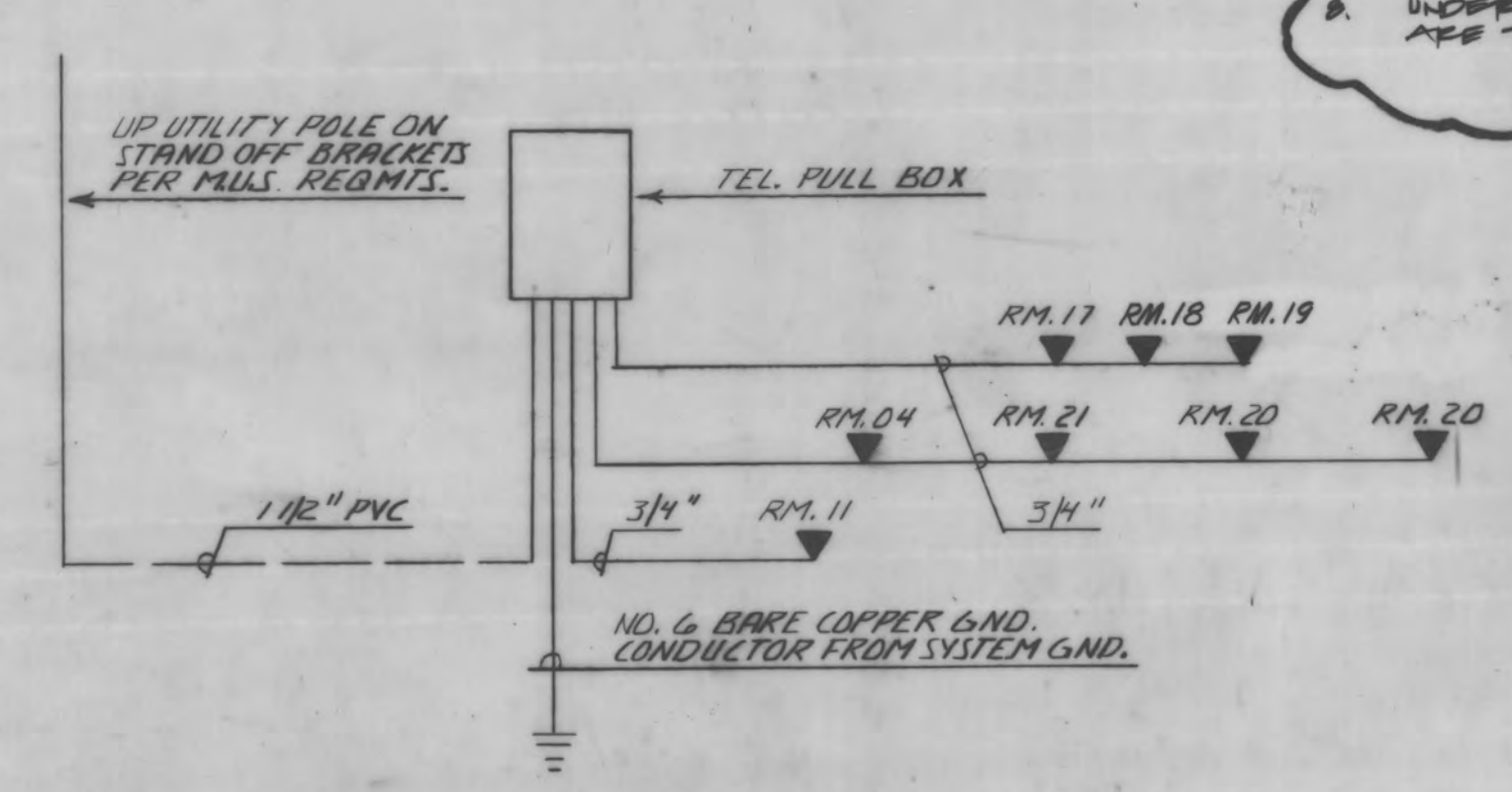


4 POWER RISER DIAGRAM
 NO SCALE
 E-1

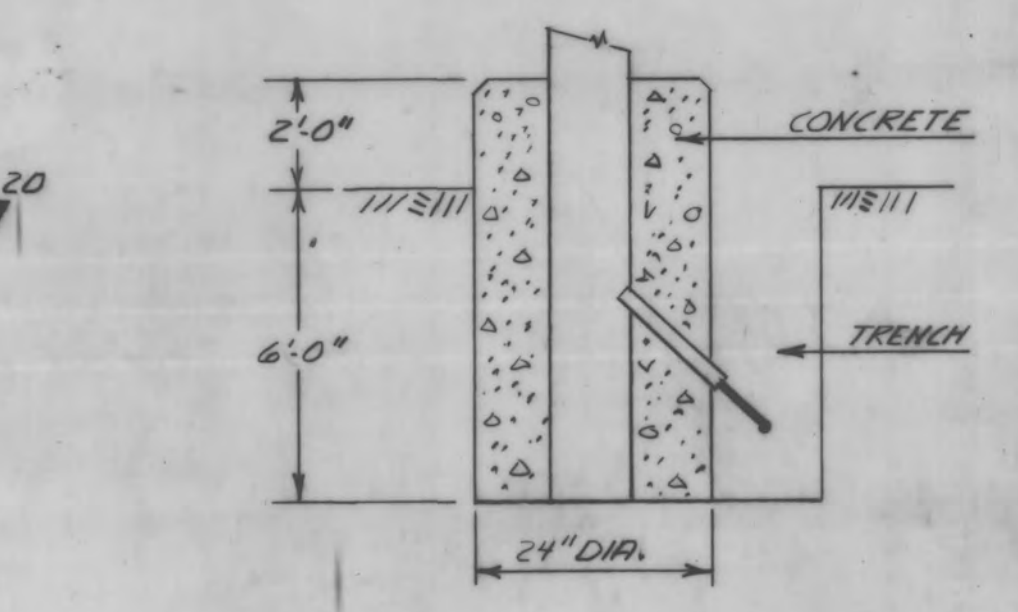
FEEDER SCHEDULE

| NO. | CONDUCTORS | CONDUIT | TYPE USE | REMARKS |
|-----|-------------------|---------|----------|--|
| 1 | 4-500 MCM | 3 1/2" | | |
| 2 | 1/0 BARE COPPER | 1 1/2" | | TO WATER SERVICE PIPE & 3/4" x 10'-0" GND. ROD |
| 3 | 4 NO. 6 | 1 1/4" | | NOTE 1 |
| 4 | NO. 8 BARE COPPER | | | TO 3/4" x 10'-0" GND. ROD |

① DENOTES FEEDER NUMBER



5 TELEPHONE RISER DIAGRAM
 NO SCALE
 E-1



6 POLE IMBEDMENT DETAIL FOR TYPE 'O' FIXTURE
 NO SCALE (ADDITIVE ALT. NO. 4)
 E-1



MICROFILMED
 DATE: 12/83
 MICROFILM NUMBER:

**SITE PLAN
 SYMBOLS, DETAILS
 & RISER DIAGRAMS**

REBID
 SHT #
 E-1

OWN CE CKD RB
 DATE 2/24/80 PROJ #

C6.0.150