

# CONTRACT DOCUMENTS & SPECIFICATIONS

## CITY HALL OUTSIDE PAINTING PROJECT

Project No. ITB-19-12

August 2019



***Prepared by:***

City of Fairbanks, Engineering Department  
800 Cushman Street  
Fairbanks, Alaska 99701

---

**TABLE OF CONTENTS**

PART I - INSTRUCTIONS TO BIDDERS ..... 4

**BID**.....9

**NON-COLLUSION AFFIDAVIT** .....11

**BID SCHEDULE**.....12

**BID MODIFICATION** .....15

**CONTRACTORS QUALIFICATION QUESTIONNAIRE**.....16

**SUB-CONTRACTOR LIST** .....17

**CONSTRUCTION CONTRACT (AGREEMENT)** .....18

**CONTRACT BOND (PERFORMANCE)** .....20

**CONTRACT BOND (PAYMENT)**.....22

**CERTIFICATE OF RELEASE** .....24

**CONSENT OF SURETY COMPANY** .....26

PART II – GENERAL PROVISIONS ..... 27

PART III - CITY SUPPLEMENTAL CONDITIONS ..... 29

PART IV - TECHNICAL & SPECIAL PROVISION ..... 37

APPENDIX A – CITY HALL DIMENSIONS..... 41

APPENDIX B – SHERWIN-WILLIAMS PATCHING MATERIAL SHEET ..... 42

APPENDIX C – SHERWIN-WILLIAMS CAULKING MATERIAL SHEET ..... 43

APPENDIX D – SHERWIN-WILLIAMS SPOT PRIME AND FINISH PAINT MATERIAL SHEET ..... 44

APPENDIX E – STAGING AREA PLAN ..... 45

**STATE WAGE RATES**

State wage rates can be obtained at <http://www.labor.state.ak.us/lss/pamp600.htm>. Use the State wage rates that are in effect 10 days before Bid Opening. The City will include a paper copy of the State wage rates in the signed Contract.

**TABLE OF CONTENTS**

PART I - INSTRUCTIONS TO BIDDERS ..... 4

**BID**.....9

**NON-COLLUSION AFFIDAVIT** .....11

**BID SCHEDULE**.....12

**BID MODIFICATION** .....15

**CONTRACTORS QUALIFICATION QUESTIONNAIRE**.....16

**SUB-CONTRACTOR LIST** .....17

**CONSTRUCTION CONTRACT (AGREEMENT)** .....18

**CONTRACT BOND (PERFORMANCE)** .....20

**CONTRACT BOND (PAYMENT)**.....22

**CERTIFICATE OF RELEASE** .....24

**CONSENT OF SURETY COMPANY** .....26

PART II – GENERAL PROVISIONS ..... 27

PART III - CITY SUPPLEMENTAL CONDITIONS ..... 29

PART IV - TECHNICAL & SPECIAL PROVISION ..... 37

APPENDIX A – CITY HALL DIMENSIONS..... 41

APPENDIX B – SHERWIN-WILLIAMS PATCHING MATERIAL SHEET ..... 42

APPENDIX C – SHERWIN-WILLIAMS CAULKING MATERIAL SHEET ..... 43

APPENDIX D – SHERWIN-WILLIAMS SPOT PRIME AND FINISH PAINT MATERIAL SHEET ..... 44

**STATE WAGE RATES**

State wage rates can be obtained at <http://www.labor.state.ak.us/lss/pamp600.htm>. Use the State wage rates that are in effect 10 days before Bid Opening. The City will include a paper copy of the State wage rates in the signed Contract.

**CITY OF FAIRBANKS  
INVITATION TO BID NO. ITB-19-12**

Sealed bids for furnishing all labor, equipment, materials, and performing all work necessary for the CITY HALL OUTSIDE PAINTING PROJECT will be received by the City Clerk's Office, City Hall, 800 Cushman Street, Fairbanks, Alaska 99701, until and including 3:00 P.M. local time, August 26, 2019, and will immediately thereafter be publicly opened and read aloud in the Engineering Conference Room at the same address.

Work includes but is not limited to: removing old paint, refinishing concrete, sealing cracks, and applying new paint to the outside of City Hall.

A mandatory onsite pre-bid meeting will be held at 10:00 A.M. Monday August 19, 2019 at City Hall, 800 Cushman Street, Fairbanks, AK for all prospective bidders.

Contract documents will be available online at <http://www.agcak.org/plansroom.html> and <http://www.theplansroom.com>. The Associated General Contractors Plans Room is located at 3750 Bonita Street in Fairbanks (907) 452-1809, and at 8005 Schoon Street in Anchorage (907) 907-561-5354. The Plans Room LLC in Anchorage is located at 4831 Old Seward Highway, Suite 202, (907) 563-2029. For the convenience and review by/of contractors, subcontractors, and suppliers, one complete hard copy set of contract documents is retained on file at the City of Fairbanks Engineering Dept. Office in City Hall, 800 Cushman Street.

The City reserves the right to waive informalities not inconsistent with the law and to reject any or all bids.

PUBLISH: Fairbanks Daily News-Miner: August 16, 17, & 18, 2019

**PART I - INSTRUCTIONS TO BIDDERS**

## DIVISION 000 – INSTRUCTIONS TO BIDDERS

**00-1.00 MANDATORY ON-SITE MEETING.** The City of Fairbanks requires prospective bidder to attend an onsite meeting at City Hall to discuss existing conditions and technical aspects for this project. The mandatory meeting is scheduled for Monday August 19, 2019 at 10:00 AM at City Hall.

**00-1.01 CONSTRUCTION DOCUMENTS ONLINE.** Contract documents are available only electronically at <http://www.agcak.org/plansroom.html> and <http://www.theplansroom.com>. The Associated General Contractors Plans Room is located at 3750 Bonita Street in Fairbanks (907) 452-1809, and at 8005 Schoon Street in Anchorage (907) 907-561-5354. The Plans Room LLC in Anchorage is located at 4831 Old Seward Highway, Suite 202, (907) 563-2029. For the convenience and review by/of contractors, subcontractors, and suppliers, one complete hard copy set of contract documents, construction plans and technical specifications is retained on file at the City of Fairbanks Engineering Department Office in City Hall, 800 Cushman Street. The City reserves the right to waive informalities not inconsistent with the law and to reject any or all bids.

**00-1.02 RECEIPT AND OPENING OF BIDS.** The City of Fairbanks, Alaska (hereinafter called the “Owner”), invites bids submitted on the forms described herein. Bids including any amendments or withdrawals must be received by the City Clerk's Office, at or prior to, the designated time. Bids not received by the City Clerk's Office at, or prior to, the designated time will not be accepted and will be returned to the bidder unopened. Mailed or hand-delivered envelopes containing the bids must be sealed, addressed to the City Clerk at 800 Cushman Street, Fairbanks, Alaska 99701-4615, and designated as specified in the “Invitation to Bid.” Faxed bid amendments must be addressed to City Purchasing Agent. Fax number: (907) 459-6731.

**000-1.03 BID SECURITY.** Bid security is required with each bid in the following amount:

1. Ten Percent of the amount of the bid if the bid does not exceed \$100,000; or
2. Ten percent of the first \$100,000 and five percent of the amount of the bid over \$100,000 if the bid exceeds \$100,000 up to a maximum of \$200,000 in security.

**000-1.04 EQUAL OPPORTUNITY.** The City of Fairbanks hereby notifies all bidders that it will affirmatively ensure that in any contract entered into pursuant to this Invitation, Disadvantaged Business Enterprises (DBEs) will be afforded full opportunity to submit bids and will not be discriminated against on the grounds of race, color, national origin, or sex in consideration for an award.

**000-1.05 NOTICE TO BIDDERS.** Bidders are hereby notified that data to assist in preparing bids is available as follows:

- City Hall As-Builts – available at City Hall, Engineering Department, 800 Cushman Street, Fairbanks, AK 99701. Please coordinate with Robert Pristash at (907) 590-3703 or Kirsten Loaiza (907) 251-1466.

**000-1.06 BID QUESTIONS.**

All questions relating to bidding procedures, design features, constructability, quantities, discrepancies, request for correction, or other technical aspects of the project shall be submitted via email to the City of Fairbanks Engineering Department via [rpriestash@fairbanks.us](mailto:rpriestash@fairbanks.us), attention Bob Priestash, City Engineer.

Questions shall be submitted to the Owner via the City website at least seven calendar days prior to the date fixed for the opening of the bids. The Owner shall provide all such corrections and any supplemental instructions in the form of addenda electronically to:

- <http://www.agcak.org/plansroom.html>, and
- <http://www.theplansroom.com>

**000-1.07 OTHER INFORMATION:**

Bid results are available after the bid opening by accessing the City of Fairbanks home page at <https://www.fairbanksalaska.us/rfps>.

The Standard Specifications for Highway Construction [English Edition] dated 2017 can be downloaded from the internet at <http://www.dot.state.ak.us/stwddes/dcspsecs/index.shtml>.

**000-1.08 CONTRACT QUANTITIES IN BID SCHEDULE.** The quantities appearing in the bid schedule are approximate only and are prepared for the comparison of bids. Payment to the contractor will be made only for the actual quantities of work performed and accepted or materials furnished in accordance with the contract. The scheduled quantities of work to be done and materials to be furnished may each be increased, decreased, or omitted as hereinafter provided.

This project contains pay items with contract quantities as defined with technical and special provisions.

**000-1.09 CONTRACT AWARD.**

1. Except as provided in the Code of Ordinances, City of Fairbanks, Alaska, also cited Fairbanks General Code (FGC); contract award authority is by resolution of the City Council.
2. The awarding authority may award a contract based on solicited bids to the lowest responsive and responsible Bidder as provided in the FGC and these contract documents and specifications.
3. Local bidder preference will be used as a criterion in awarding this bid. (The provisions of local preference are not applicable to any contract funded by a Federal or State grant which expressly prohibits a local preference in awarding contracts.)

**000-1.10 REQUIRED DOCUMENTS.** Each bid shall be submitted on the prescribed forms.

Required for Bid. Bids will not be considered if the following documents are not completely filled out and submitted at the time of bidding:

1. Bid and Non-Collusion Affidavit
  2. Bid Schedule(s)
-

3. Bid Bond (with Power of Attorney when appropriate)
4. Legible reproduction of current Alaska Contractor's License or Certified License Statement
5. Copy of Alaska Business License

Required After Notice of Apparent Low Bidder. The apparent low bidder is required to complete and submit the following document within 5 working days after receipt of written notification:

1. Sub-Contractors List

Required for Award. In order to be awarded the contract, the successful bidder must completely fill out and submit the following documents within the time specified in the intent to award letter:

1. Construction Contract (Agreement)
2. Contract Bond (Performance)
3. Contract Bond (Payment)
4. Contractor's Questionnaire
5. Certificate of Insurance (from carrier)
6. Bidders must register annually with the Civil Rights Office in order to be eligible for award. If not registered, or if unsure, submit the following: Bidder Registration (Form 25D-6)

**000-1.11 CHANGE IN PREVAILING WAGE REQUIREMENTS.** The Department of Labor and Workforce Development (DOLWD) proposed a revised regulatory definition of "on-site" in 8 AAC 30.910 to clarify the scope of activities covered by Alaska's Little Davis Bacon Act (AS 36.05.010-AS 36.05.110). For a copy of the revised definition of 8 AAC 30.910, go to: <http://labor.alaska.gov/lss/2011-02-22-regs.pdf>.

DOLWD will enforce the revised provisions on all projects with a bid opening date on or after February 15, 2011. Prospective bidders on projects with a bid opening date on or after February 15, 2011, must consider the impact of the revised regulation and bid accordingly. DOLWD will not enforce the new "onsite" definition on projects with a bid opening date prior to February 15, 2011.

**000-1.12 USING APPRENTICES.** Contractors must comply with Administrative Order 226, which establishes a 15% goal for hiring apprentices in certain job categories; on highway, airport, harbor, dam, tunnel, utility or dredging projects financed by the State of Alaska. This Administrative Order will apply to all such projects advertised after September 1, 2005, where the project construction cost exceeds 2.5 million dollars.

For additional details, please visit: <http://labor.alaska.gov/lss/forms/ApprenHireReq.pdf>.



**000-1.13 SPECIAL NOTICE TO BIDDERS.** The City of Fairbanks may cancel this solicitation either before or after bid opening, but prior to the issuance of the "Notice of Intent to Award" under Subsection 103-1.03 of the Standard Specifications for Highway Construction, 2017 Edition, if it is determined that award is not in the best interest of the City.

The City also reserves the right to cancel this solicitation after issuance of the "Notice of Intent to Award" and the declared apparent low bidder for the project is cautioned to not proceed with any aspect of contract performance until a "Letter of Award" and "Notice to Proceed" have been issued by the City. The apparent low bidder is not relieved from any of the procedural requirements of Section 103 of the Standard Specifications for Highway Construction, 2017 Edition. By submitting a bid for this project, the bidder agrees that the City will not provide compensation for, nor be held liable for, any bidder or prospective contractor incurred costs associated with bid preparation or other prospective contractor incurred costs.

**CITY OF FAIRBANKS**  
**BID**  
**ITB-19-12**

Bid of \_\_\_\_\_  
(hereinafter called "BIDDER"), organized and existing under the laws of the State of \_\_\_\_\_  
doing business as \_\_\_\_\_\*,  
to the CITY OF FAIRBANKS, a municipal corporation of the State of Alaska (hereinafter called "OWNER").

In compliance with your Advertisement for Bids, BIDDER hereby proposes to perform all WORK for the **CITY HALL OUTSIDE PAINTING PROJECT**, in strict accordance with the CONTRACT DOCUMENTS, within the time set forth therein, and at the prices stated below.

By submission of the BID, each BIDDER certifies, and in the case of a joint BID each party thereto certifies as to his own organization, that this BID has been arrived at independently, without consultation, communication, or agreement as to any matter relating to the BID with any other BIDDER or with any competitor.

BIDDER hereby agrees to commence WORK under this contract on or before a date to be specified in the NOTICE TO PROCEED and to fully complete the PROJECT by September 30, 2019, if weather does not permit completion by September 30, 2019, that the time of completion shall be July 31, 2020. BIDDER further agrees to pay liquidated damages in accordance with the Contract Documents.

BIDDER acknowledges receipt of the following ADDENDA (give number and date of each):

Addenda	Date Issued	Addenda	Date Issued

\*Insert "a corporation", "a partnership", or "an individual" as applicable.

BIDDER agrees to perform all the work described in the CONTRACT DOCUMENTS for the following unit prices or lump sum:

**ON ATTACHED BID SCHEDULE(S)**

NOTE: Bid Items marked with an asterisk \* are "Contract Quantity" items. These items will not be measured for payment in the field, but will be paid for using the estimated quantities listed and the bid unit prices unless changes in the work are directed by the Engineer in writing, that would change those quantities. Quantity calculations are available for review at the City Engineer's office at the City Hall, 800 Cushman Street, Fairbanks, Alaska 99701-4615.

*Respectfully submitted:*

\_\_\_\_\_  
Signature

\_\_\_\_\_  
Address

\_\_\_\_\_  
Title

\_\_\_\_\_  
Telephone Number

\_\_\_\_\_  
Date

**NON-COLLUSION AFFIDAVIT**

UNITED STATES OF AMERICA  
STATE OF ALASKA

I, \_\_\_\_\_, of \_\_\_\_\_  
(Name of Officer) (Firm Name)

\_\_\_\_\_, being duly sworn, do depose and state:

That I, or the firm, association or corporation of which I am a member, a bidder, on the contract to be awarded, by the City of Fairbanks of the State of Alaska, for the construction of that certain project designated as: the **CITY HALL OUTSIDE PAINTING PROJECT**, located at Fairbanks, Alaska, in the State of Alaska, have not, either directly or indirectly, entered into any agreement, participated in any collusion, or otherwise taken any action in restraint of free competitive bidding in connection with such contract.

\_\_\_\_\_  
(Signature)

Subscribed and sworn to this \_\_\_\_\_ day of \_\_\_\_\_, 2019.

\_\_\_\_\_  
Notary Public

My Commission Expires:

**BID SCHEDULE**

The Bidder shall insert a unit bid price or a lump sum price in figures opposite each pay item and total price for which an estimated quantity appears in the bid schedule. The estimated quantity of work for payment on a lump sum basis will be “all required” and as further specified in the contract.

<b>City of Fairbanks ITB-19-12</b>		<b>City Hall Outside Painting Project</b>			
<b>BID SCHEDULE</b>		<b>BASE BID</b>			
Item No.	Item Description	Pay Unit	Quantity	Unit Price	Amount Bid
640(1)	MOBILIZATION AND DEMOBILIZATION	LUMP SUM	ALL REQUIRED		
708(1)	PREPARATION OF SURFACE	LUMP SUM	ALL REQUIRED		
708(2)	APPLICATION OF NEW PAINT	LUMP SUM	ALL REQUIRED		
A: Total Base Bid:					
B: Local Bidders Preference (5%), \$50,000 max.					
A - B: Adjusted Base Bid Amount:					

**BID BOND**

KNOW ALL BY THESE PRESENTS, that we, the undersigned,

\_\_\_\_\_ as Principal,  
and \_\_\_\_\_ as Surety,  
are hereby held and firmly bound unto the CITY OF FAIRBANKS, ALASKA as Owner in the penal sum of \_\_\_\_\_ for the payment of which, well and truly to be made, we hereby jointly and severally bind ourselves, our heirs, executors, administrators, successors and assigns.

Signed, this \_\_\_\_\_ day of \_\_\_\_\_, 2019.

The Condition of the above obligation is such that whereas the Principal has submitted to the CITY OF FAIRBANKS a certain Bid, attached hereto, and hereby made a part hereof to enter into a contract in writing, for the **CITY HALL OUTSIDE PAINTING PROJECT**.

NOW, THEREFORE,

- a. If said Bid shall be rejected, or in the alternate,
- b. If said Bid shall be accepted and the Principal shall execute and deliver a contract in the Form of Contract attached hereto (properly completed in accordance with said Bid) and shall furnish a bond for his faithful performance of said contract, and for the payment of all persons performing labor or furnishing materials in connection therewith, and shall in all other respects perform the agreement created by the acceptance of said Bid,

then this obligation shall be void, otherwise the same shall remain in force and effect; it being expressly understood and agreed the liability of the Surety for any and all claims hereunder shall, in no event, exceed the penal amount of this obligation as herein stated.

The Surety, for value received, hereby stipulated and agrees the obligations of said Surety and its bond shall be in no way impaired or affected by any extension of the time within which the Owner may accept such Bid; and said Surety does hereby waive notice of any such extension.

IN WITNESS THEREOF, the Principal and the Surety have hereunto set their hands and seals, and such of them as are corporations have caused their corporate seals to be hereto affixed and these presents to be signed by their proper officers, the day and year first set forth above.

**BID BOND (continued)**

\_\_\_\_\_ (L.S.)  
Principal

By: \_\_\_\_\_

\_\_\_\_\_  
Surety

By: \_\_\_\_\_

IMPORTANT - Surety companies executing bonds must appear on the Treasury Department's most current list (Circular 570 as amended) and be authorized to transact business in the state where the project is located.

**CITY OF FAIRBANKS**

**BID MODIFICATION**

**CITY HALL OUTSIDE PAINTING PROJECT**

Modification Number: \_\_\_\_\_

Note: All revisions shall be made to the unadjusted bid amount (s).

Changes to the adjusted bid amounts will be computed by the City.

<b>PAY ITEM NO.</b>	<b>PAY ITEM DESCRIPTION</b>	<b>REVISION TO UNIT BID PRICE</b>	<b>REVISION TO UNIT BID AMOUNT</b>

**TOTAL REVISION: \$** \_\_\_\_\_

\_\_\_\_\_  
Name of Bidding Firm

\_\_\_\_\_  
Responsible Party Signature Date

This form may be duplicated if additional pages are needed.



**CONTRACTORS QUALIFICATION QUESTIONNAIRE**

**A. FINANCIAL**

1. Have you ever failed to complete a contract due to insufficient resources?

No  Yes If YES, explain:

2. Describe any arrangements you have made to finance this work:

**B. EQUIPMENT**

1. Describe the equipment you have available and intend to use for this project. List the item, quantity, make, model, size/capacity and present market value.

2. What percent of the total value of this contract do you intend to subcontract? \_\_\_\_\_ %

3. Do you propose to purchase any equipment for use on this project?

No  Yes If YES, describe type, quantity, and approximate:

4. Do you propose to rent any equipment for this work?

No  Yes If YES, describe type and quantity:

5. Is your bid based on firm offers for all materials necessary for this project?

Yes  No If NO, please explain:

**C. EXPERIENCE**

1. Have you had previous construction contracts or subcontracts with the State of Alaska?

Yes  No

Describe the most recent or current contract, its completion date, and scope of work:

2. List, as an attachment to this questionnaire, other construction projects you have completed, the dates of completion, scope of work, and total contract amount for each project completed in the past 12 months.

**I hereby certify that the above statements are true and complete.**

\_\_\_\_\_  
Name of Contractor

\_\_\_\_\_  
Name and Title of Person Signing

\_\_\_\_\_  
Signature

\_\_\_\_\_  
Date

**SUB-CONTRACTOR LIST**

The apparent low bidder shall complete this form and submit it so as to be received by the City Engineer prior to the close of business on the fifth working day after receipt of written notice from the City.

Failure to submit this form with all required information by the due date will result in the bidder being declared nonresponsive and may result in the forfeiture of the Bid Security.

Scope of work must be clearly defined. If an item of work is to be performed by more than one firm, indicate the portion or percent of work to be done by each.

Check as Applicable:

- All work on the above-referenced contract will be accomplished without sub-contracts greater than 1/2 of 1% of the contract amount.

OR

- Sub-contractor List is as follows, in accordance with Fairbanks General Code 54-162.

Firm Name, Address, Telephone No.	Alaska Business License No., Contractor's Registration No.	Scope of Work to be Performed

Continue sub-contractor information on additional sheets as necessary.

I hereby certify the above listed firms possessed current Alaska Business Licenses and Contractor Registrations that were valid on the day of the bid opening for this project.

\_\_\_\_\_  
Signature of Authorized Company Representative

\_\_\_\_\_  
Title

\_\_\_\_\_  
Company Name

\_\_\_\_\_  
Company Address

\_\_\_\_\_  
Date

\_\_\_\_\_  
Phone Number

**CONSTRUCTION CONTRACT (AGREEMENT)**

THIS AGREEMENT, made and entered into this \_\_\_\_\_ day of \_\_\_\_\_, 2019, by and between \_\_\_\_\_, hereinafter (the official name, form of organization, and address of Contractor - if partnership, name of partners) called the "Contractor" and City of Fairbanks, 800 Cushman Street, Fairbanks, Alaska 99701-4615, hereinafter called the "Owner".

WITNESSETH THAT:

WHEREAS, pursuant to the invitation of the Owner, extended through an officially published "Advertisement for Bids," the Contractor did in accordance therewith, on the \_\_\_\_\_ day of \_\_\_\_\_, 2019, file with the Owner a Bid containing an offer which was invited by said notice; and

WHEREAS, the Owner has heretofore determined said offer was the lowest and best submitted:

NOW, THEREFORE, IT IS AGREED:

First: That the Contractor shall comply in every way with the requirements of those certain specifications entitled: **CITY HALL OUTSIDE PAINTING PROJECT**

Second: That in consideration of faithful compliance with the terms and conditions of this Agreement the Owner shall pay to the Contractor, at the times and in the manner provided in said specifications, the total sum of:

\_\_\_\_\_  
(the basic contract price both in words and figures)

which sum is subject, however, to increase or decrease in such proportion as the quantities named in said proposal are so changed, all as in said specifications and proposal provided.

Third: That the time of completion is **September 30, 2019** (if weather does not permit completion by September 30, 2019, that the time of completion shall be July 31, 2020).

Fourth: That the contract documents which are hereby made a part of this Agreement by actual attachment or by this reference thereto are as follows:

1. The "Advertisement for Bids" - being the invitation to submit a proposal;
2. The Specifications named above by title;
3. The Detailed Plans listed and described in said specifications, together with those which may be issued as supplements thereof; and
4. The Bid of the Contractor, which was submitted on \_\_\_\_\_, 2019, the original or a conformed copy of which is hereto attached and marked "Exhibit A".

**CONSTRUCTION CONTRACT (AGREEMENT) (Continued)**

IN WITNESS WHEREOF, said Contractor and said Owner have caused this Agreement to be executed on the day and year first above written.

\_\_\_\_\_  
(Contractor)

By: \_\_\_\_\_  
(Name, Title)

(SEAL) And/Attest \_\_\_\_\_

Witness: (If individual or Partnership)  
\_\_\_\_\_  
(Name)

-----  
CITY OF FAIRBANKS, FAIRBANKS, ALASKA  
(Owner)

(SEAL) By: \_\_\_\_\_  
JIM MATHERLY, Mayor

Attest: \_\_\_\_\_  
DANYIELLE SNIDER, City Clerk

Approved as to substance: \_\_\_\_\_  
ROBERT PRISTASH, P.E., City Engineer

Approved as to form: \_\_\_\_\_  
PAUL J. EWERS, City Attorney Date

**CONTRACT BOND (PERFORMANCE)**

KNOW ALL BY THESE PRESENT:

That \_\_\_\_\_ of \_\_\_\_\_  
as principal(s) and \_\_\_\_\_ of \_\_\_\_\_ as  
surety(sureties) are firmly bound and held unto the City of Fairbanks in the penal sum of  
\_\_\_\_\_ dollars (\$ \_\_\_\_\_),  
good and lawful money of the United States of America, for the payment whereof well and truly to be  
made, we bind ourselves, our heirs, executors, administrators and assigns, jointly and severally, firmly by  
these presents.

WHEREAS, the said principals have entered into written contract with said City of Fairbanks on the  
\_\_\_\_\_ day of \_\_\_\_\_, 2019, for construction of the **CITY HALL OUTSIDE PAINTING  
PROJECT**, said work to be done according to the terms of said contract.

NOW, THEREFORE, the conditions of the foregoing obligation are such that if the said principals shall well  
and truly perform and complete all obligation and work under said contract and the proposal, and special  
conditions attached hereto and made a part hereof and or the plans and specifications of the City of  
Fairbanks, or the specifications of any participating Local, State or Federal Agency when such  
specifications are designated by the City of Fairbanks as those governing the conduct of construction  
under this contract of which reference is hereby made and which are by reference made a part hereof  
according to the terms as the same are now constituted or as they may hereafter be modified in  
accordance with the provisions of said contract and specifications and during the life of any guarantee  
required under the contract, and if the said principals shall comply with all requirements of law and shall  
indemnify and save harmless the City of Fairbanks and employees thereof against any damage or loss  
which they or any of them may suffer or for which they or any of them become liable by the default of  
said principals, or by any neglect or carelessness on the part of said principals, their agents, servants or  
employees in the performance of said contract, then these presents shall become void, otherwise they  
shall remain in full force and effect.

IN WITNESS WHEREOF, we have hereunto set our hands and seals at \_\_\_\_\_, Alaska, this \_\_\_\_\_  
day of \_\_\_\_\_, 2019.

Principals: \_\_\_\_\_  
\_\_\_\_\_

**CONTRACT BOND (PERFORMANCE) (Continued)**

Countersigned: \_\_\_\_\_

(Corporation Seal)

Sureties: \_\_\_\_\_

Approved as to Form:

\_\_\_\_\_  
PAUL J. EWERS, City Attorney

\_\_\_\_\_  
Date

**CONTRACT BOND (PAYMENT)**

KNOW ALL BY THESE PRESENT:

That \_\_\_\_\_ of \_\_\_\_\_  
as principal(s) and \_\_\_\_\_ of \_\_\_\_\_ as  
surety(sureties) are firmly bound and held unto the City of Fairbanks in the penal sum of  
\_\_\_\_\_ dollars (\$ \_\_\_\_\_),  
good and lawful money of the United States of America, for the payment whereof well and truly to be  
made, we bind ourselves, our heirs, executors, administrators and assigns, jointly and severally, firmly by  
these presents.

WHEREAS, the said principals have entered into written contract with said City of Fairbanks on the  
\_\_\_\_\_ day of \_\_\_\_\_, 2019, for construction of the **CITY HALL OUTSIDE PAINTING  
PROJECT**, said work to be done according to the terms of said contract.

NOW, THEREFORE, the conditions of the foregoing obligations are such that if the said principals shall  
comply with all requirements of law and pay, as they become due, all just claims for labor performed and  
materials and supplies furnished upon or for the work under said contract, whether said labor be  
performed and said materials and supplies be furnished under the original contract, any subcontract or  
any and all duly authorized modifications with the percentage of change limitations as set forth in the  
specifications; and if the principals shall indemnify and save harmless the City of Fairbanks and employees  
thereof against any damage or loss which they or any of them may suffer or for which they or any of them  
become liable by the default of said principals, or by any neglect or carelessness on the part of said  
principals, their agents, servants or employees, then these presents shall become void, otherwise they  
shall remain in full force and effect.

IN WITNESS WHEREOF, we have hereunto set our hands and seals at \_\_\_\_\_, Alaska, this \_\_\_\_\_  
day of \_\_\_\_\_, 2019.

Principals: \_\_\_\_\_

\_\_\_\_\_

Countersigned: \_\_\_\_\_

**CONTRACT BOND (PAYMENT) (Continued)**

(Corporation Seal)

Sureties:

\_\_\_\_\_  
\_\_\_\_\_

Approved as to Form:

\_\_\_\_\_  
PAUL J. EWERS, City Attorney

\_\_\_\_\_  
Date



**CERTIFICATE OF RELEASE**

TO: CITY OF FAIRBANKS, ALASKA

FROM: \_\_\_\_\_  
(Name of Contractor)

RE: Contract entered into on the \_\_\_\_\_ day of \_\_\_\_\_, 2019

with \_\_\_\_\_  
(Contractor) (Address)

\_\_\_\_\_ for the construction of the  
**CITY HALL OUTSIDE PAINTING PROJECT**, located in the town of Fairbanks, Alaska.

KNOW ALL BY THESE PRESENT:

- A. The undersigned hereby certifies there are no outstanding claims of laborers, materials men, subcontractors or other arising out of the performance of this contract, which might be asserted against the CITY OF FAIRBANKS and the undersigned agrees that, in the event of the assertion of any such claims against the CITY OF FAIRBANKS, the undersigned will indemnify and save harmless the CITY OF FAIRBANKS from any such claims.
- B. That the undersigned hereby acknowledges receipt from the CITY OF FAIRBANKS of all sums payable to the undersigned by the CITY OF FAIRBANKS under or pursuant to the above mentioned contract with the following exceptions: (List all exceptions here. If none, state NONE.)
- C. The undersigned further certifies and acknowledges the CITY OF FAIRBANKS has duly performed and fulfilled all the terms, provisions, and conditions on the part of the CITY OF FAIRBANKS to be performed or fulfilled under or pursuant to said contract, with the exceptions as noted above.
- D. The undersigned certifies the wage rates paid under this contract are in conformity with the contract provisions established for wage rates.
- E. The undersigned certifies all Federal, State or Local taxes incurred by the Contractor, Subcontractors, or other persons or persons in the performance of this contract and monies owed the City of Fairbanks by the Contractor have been paid in full.

**CERTIFICATE OF RELEASE (Continued)**

F. That the undersigned, except as regards to items listed in Paragraph "B" in consideration of value received, receipt whereof is hereby acknowledged, does hereby release the CITY OF FAIRBANKS from all claims arising under or by virtue of said contract.

IN WITNESS WHEREOF, the undersigned has signed and sealed this instrument this \_\_\_\_\_ day of \_\_\_\_\_, 2019.

\_\_\_\_\_  
Signature

\_\_\_\_\_, being first duly sworn on oath, deposes and says that he  
(Name)  
is the \_\_\_\_\_ of the \_\_\_\_\_  
(Title) (Name of Company)

Second, that he has read the foregoing certificate by him/her subscribed as

\_\_\_\_\_ of the \_\_\_\_\_  
(Title) (Name of Company)

The matters and things stated herein are, to the best of his/her knowledge and belief, true.

Subscribed and sworn to before me on this \_\_\_\_\_ day of \_\_\_\_\_, 2019.

\_\_\_\_\_  
Notary Public in and for the State of Alaska  
My Commission Expires: \_\_\_\_\_

---

**CONSENT OF SURETY COMPANY TO FINAL PAYMENT**

---

TO: CITY OF FAIRBANKS  
800 Cushman Street  
Fairbanks, Alaska 99701-4615

CONTRACT FOR:

CONTRACTOR:

CONTRACT DATE:

---

In accordance with the provisions of the Contract between the Owner and the Contractor as indicated above, the:

\_\_\_\_\_, SURETY COMPANY

on bond of

\_\_\_\_\_, CONTRACTOR

HEREBY APPROVES OF THE FINAL PAYMENT TO THE Contractor, and agrees that final payment to the Contractor shall not relieve the Surety Company of any of its obligations to:

\_\_\_\_\_, OWNER

as set forth in the said Surety Company's bond. Surety expressly agrees that any and all valid claims of subcontractors and all persons supplying labor or materials to the project will be satisfied by Contractor or Surety in a timely manner.

IN WITNESS WHEREOF, the Surety Company has hereunto set its hand this \_\_\_\_\_ day of \_\_\_\_\_, 2019.

\_\_\_\_\_  
Surety Company

ATTEST:

\_\_\_\_\_  
Signature of Authorized Representative

\_\_\_\_\_  
Title

## **PART II – GENERAL PROVISIONS**

DIVISION 100 – STANDARD SPECIFICATION FOR HIGHWAY CONSTRUCTION FOR THE ALASKA DEPARTMENT OF TRANSPORTATION & PUBLIC FACILITIES STANDARD SPECIFICATIONS FOR HIGHWAY CONSTRUCTION, 2017 EDITION, ARE MODIFIED AS FOLLOWS:

**SECTION 107**  
**LEGAL RELATIONS AND RESPONSIBILITY TO PUBLIC**

01/20/15 (N5)

*Add the following subsection:*

**107-1.22 NOISE ABATEMENT.** The Contractor will not disturb the peace in contravention of any applicable local Ordinance. Within the City of Fairbanks, the applicable ordinance is FGC Section 46-42. Any noise within the City of Fairbanks as described in FGC Section 46-42(A)(3) will be limited to the hours of 7 a.m. to 11 p.m. unless exempted by FGC Section 46-42(E).

### **PART III - CITY SUPPLEMENTAL CONDITIONS**

DIVISION 100 - GENERAL PROVISIONS OF THE ALASKA DEPARTMENT OF TRANSPORTATION & PUBLIC FACILITIES STANDARD SPECIFICATIONS FOR HIGHWAY CONSTRUCTION, 2017 EDITION, ARE FURTHER MODIFIED BY THIS PROJECT AS FOLLOWS:

**SECTION 101  
DEFINITIONS AND TERMS**

**SECTION 101-1.01 GENERAL.** *ADD the following:* In all specifications, DELETE all references to "Department" or "State" or "State of Alaska" and REPLACE with: "City" (meaning the City of Fairbanks). Also, DELETE all references to "Contracting Officer" and REPLACE with: "City Engineer."

**SECTION 101-1.03 DEFINITIONS.** *ADD the following:*

**SUBMITTAL.** A bound document prepared by the contractor consisting of a compilation of product data, shop drawings calculations, certifications and reports to be submitted to the Engineer.

**SECTION 102  
BIDDING REQUIREMENTS AND CONDITIONS**

**102-1.07 BID GUARANTY.** *DELETE the second sentence and SUBSTITUTE the following:* The guaranty shall be unconditionally payable to the City of Fairbanks and shall be in the form of an acceptable Bid Bond, or a certified check, cashier's check, or money order.

**102-1.09 WITHDRAWAL OR REVISION OF BIDS.** *Add the following to the first paragraph:* Modifications to bids shall be submitted on forms furnished by the City or reasonable facsimiles thereof. If a form other than that provided is used it shall be of a very similar format, containing at a minimum the information required on the provided form.

**SECTION 103  
AWARD AND EXECUTION OF CONTRACT**

**103-1.01 CONSIDERATION OF BIDS.** *In the first sentence of the last paragraph after "...may protest a proposed Award of contract" add the following:* "..., award of a contract, or a solicitation for construction ..."

**103-1.06 INSURANCE REQUIREMENTS.**

DELETE Item 1: Workers' Compensation and see new subsection Certificate of Insurance.

DELETE Item 2: Commercial General Liability and see new subsection Certificate of Insurance.

DELETE Item 3: Automobile Liability and see new subsection Certificate of Insurance.

*DELETE 4th paragraph and SUBSTITUTE the following:*

The City of Fairbanks shall be named as an additional insured on policies required by paragraphs 2 through 4 above. All of the above insurance coverages shall be considered to be primary and noncontributory to any other insurance carried by the City of Fairbanks, whether through self-insurance or otherwise.

ADD the following [new] subsections:

**Certificate of Insurance**

Contractor must furnish a certificate of insurance within the (10) days of receipt of the Notice-of-Intent to Award and must endorse policies to provide for a thirty (30) day prior notice of cancellation, non-renewal or material change of the policies. Failure to furnish satisfactory evidence of insurance or lapse of policy is a material breach of the contract and grounds for termination of this agreement. Each policy shall be endorsed with a waiver of subrogation in favor of the Owner. All other insurance policies required of the Contractor by this agreement shall be endorsed to provide that such insurance shall apply as primary insurance and that any insurance or self-insured carried by the Owner will be excess only and will not contribute with the insurance required by this agreement. All other insurance policies required of the Contractor and subcontractors by this Agreement shall be endorsed to name the Owner as additional insured. All insurance shall be on an occurrence from acceptable to the Owner and having an A.M. Best rating of "A" or better.

1. Workers' Compensation and Employers' Liability Insurance as required by any applicable law or regulation. Employers' liability insurance shall be in the amount no less than \$500,000 each accident for bodily injury, \$500,000 policy limit for bodily injury by disease and \$500,000 each employee for bodily injury by disease. The Contractor shall be responsible for Workers' Compensation Insurance for any subcontractor who directly or indirectly provides services under this contract. This coverage must include statutory coverage for states in which employees are engaging work. If there is an exposure of injury to Contractor's employees under the U.S. Longshoremen's Harbor Workers' Compensation Act, the Jones Act, or under laws, regulations or statutes applicable to maritime employee, coverage shall be included for such injuries or claims. The coverage shall include waiver of subrogation against the City.

2. Commercial General Liability Insurance: The Contractor is required to provide Commercial General Liability (CGL) insurance with limits not less than \$5,000,000 combined single limit per occurrence and \$5,000,000 in the aggregate not excluding premises operations, independent contractors, products, and completed operations, broad form property damage, blanket contractual, explosion, collapse and underground hazards. **Limits may be a combination of primary and excess (umbrella) policy forms.**

3. Comprehensive Automobile Liability Insurance: Covering all owned, hired and non-owned vehicles with coverage limits not less than \$1,000,000 single limit per occurrence bodily injury and property damage.

4. Property Insurance: The Contractor shall submit to the Owner evidence of All Risk Builder's Risk Insurance for all physical loss, including earthquake and flood (100% completed value basis) upon the entire work naming the Owner, the Contractor and the subcontractors as additional insured parties and as their interests may appear to the full contract sum thereof, until the project is completed by the Contractor and accepted by the Owner. The policy, by endorsement, shall specifically permit partial or beneficial occupancy at or prior to substantial completion or final acceptance of the entire work. (Only if applicable)

A. PROOF OF INSURANCE: The Contractor shall furnish the Owner with a Certificate of Insurance or where requested by the Owner, the policy declaration page with required endorsements attached thereto showing the type, amount, effective dates and dates of expiration of all policies. All endorsements shall reference policy number and the project name and project number. The Owner is the City of Fairbanks and is to be identified on all certificates and endorsements.

B. To the fullest extent permitted by law, the Contractor shall defend, indemnify and hold harmless the City of Fairbanks its officers, and employees from and against any and all loss, expense, damage, claim,

---



demand, judgment, fine, charge, lien, liability, action, cause of action, or proceedings of any kind whatsoever (whether arising on account of damage to or loss of property, or personal injury, emotional distress or death) arising directly or indirectly in connection with the performance or activities of the Contractor hereunder, whether the same arises before or after completion of the contractor's operations or expiration of this Agreement, except for damage, loss or injury resulting from the Owner's gross negligence or willful misconduct.

C. Without limiting its indemnification, the Contractor shall maintain, until acceptance of the project by the Owner, occurrence type coverage of the kinds and minimum amounts set forth above. All insurance limits are minimum. If the Contractor's policy contains higher limits, the Owner shall be entitled to coverage to the extent of such higher limits. The Owner, at its sole discretion, may rise or lower the limit.

#### **SECTION 104 SCOPE OF WORK**

*ADD the following [new] subsections:*

**104-1.08 RECORD DRAWINGS.** The Contractor shall maintain a "mark-up" set of plans which shall be revised by the Contractor as the work progresses to reflect current conditions. The revisions are to be indicated in a neat, well organized manner and are to include the elevation and plan location of any utilities, structures, etc. encountered or installed.

The mark-up plans shall become the property of the City prior to final acceptance and payment of demobilization.

**104-1.09 CLAIMS FOR ADJUSTMENTS AND DISPUTES.** All submitted cost and price data shall be certified according to FGC Section 54-345 COST OR PRICING DATA.

No time related claims will be compensated to the contractor for owner delay prior to the Contractual End Date.

#### **SECTION 105 CONTROL OF WORK**

*Add the following NEW subsection:*

**105-1.18 WARRANTY.** Neither the final certificate of payment nor any provision in the Contract nor partial or entire use of occupancy of the premises by the Owner shall constitute an acceptance of Work not done in accordance with the Contract Documents or relieve the Contractor of liability in respect to any express warranties or responsibility for faulty materials or workmanship. The Contractor shall remedy any defects in the Work resulting therefrom which shall appear within a period of one (1) year from the date of the substantial completion of Work unless a longer period is specified. The Owner or Engineer will give notice of observed defects with reasonable promptness.

#### **SECTION 106 CONTROL OF MATERIAL**

**106-1.03 TESTING AND ACCEPTANCE.** DELETE item 2. entirety and SUBSTITUTE the following:

2. **ACCEPTANCE TESTING.** The City has the exclusive right and responsibility for determining the acceptability of the construction and incorporated materials.

The City will sample materials and perform acceptance tests at its expense except as otherwise stated. The cost of tests that fail to meet specification requirements will be deducted from the Contract price. Samples will be taken by a qualified testing firm or representative of the Owner. Copies of tests will be furnished to the Contractor upon request.

The Contractor shall not rely on the City's acceptance testing for its quality control. The City's acceptance testing is not a substitute for the Contractor's quality control. The Engineer may retest materials that have failed the City's acceptance test but is not required to do so.

**SECTION 107**  
**LEGAL RELATIONS AND RESPONSIBILITY TO PUBLIC**

**107-1.01 LAWS TO BE OBSERVED.** *Add to the end of the first paragraph the following:* The Fairbanks General Code is available electronically from the City of Fairbanks web site: <http://www.fairbanksalaska.us/>. Select the tab links from left side of the homepage indicating "Code of Ordinances" and notice in particular Chapter 54 - Procurement.

**107-1.11 PROTECTION AND RESTORATION OF PROPERTY AND LANDSCAPE.**

1. Hazardous Materials. *Add the following:*

- g. Fuel storage facilities shall not be placed within 100 feet of water bodies and must be within an impermeable diked area having a holding capacity at least ten percent greater than that of the largest independent fuel container. Manifolded tanks and bladders are considered as a container. Vehicle refueling shall not occur within the annual floodplain.

**107-1.13 RESPONSIBILITY FOR DAMAGE CLAIMS.** *Add the following:*

The Contractor's responsibility for damage claims under this section specifically includes all actionable damages, including, but not limited to, claims of damage to structures, retaining walls, utilities, machinery and vibration-sensitive business operations, caused by vibrations which are produced by the execution of this contract. The Contractor shall be liable for all expenses incurred to resolve all such damage claims, at no cost to the City.

*Add the following new Subsection:*

**107-1.22 NOISE ABATEMENT.** The contractor shall comply with FGC Section 46-42 which states, in part, as follows:

(A) A person commits the offense of disturbing the peace if:

- (3) Between the hours of 11:00 p.m. and 7:00 a.m., operates or uses a pile driver, pneumatic hammer, bulldozer, road grader, loader, power shovel, derrick, backhoe, power saw, manual hammer, motorcycle, snow machine or other instrument, appliance or vehicle which generates loud sounds or noise, after having been informed by another that such operation or use is disturbing the peace and privacy of others.

(E) Exemptions. The following sound or noise is not prohibited by this Section:

- (3) Noise necessarily produced in the course of work required to protect persons or property from an imminent peril;
- (4) Noise produced by any activity for which a permit has been issued pursuant to paragraph (E) of this Section.

(F) Applications for a permit for relief from the application of this Section to any activity on the basis of undue hardship may be made to the City Mayor or his duly authorized representative. Any permit granted by the City Mayor hereunder shall contain all conditions upon which such permit has been granted and shall specify a reasonable time that the permit shall be effective. The City Mayor, or his duly authorized representative, may grant the relief as applied for if he finds:

- (1) Additional time is necessary for the applicant to alter or modify his/her activity or operation to comply with this Section; or
- (2) The activity, operation or noise source will be of temporary duration, and cannot be done in a manner that would comply with other paragraphs of this Section; and

- (3) No other reasonable alternative is available to the applicant; and

However, the Mayor may prescribe any conditions or requirements he deems necessary to minimize adverse effects upon the community or the surrounding neighborhood.

#### **SECTION 108 PROSECUTION AND PROGRESS**

**108-1.03 PROSECUTION AND PROGRESS.** Delete the last sentence of the first paragraph in its entirety and substitute the following: The Contractor shall submit the following documents to the Engineer at least fifteen (15) working days before the preconstruction conference:

**108-1.06 CONTRACT TIME, EXTENSION OF CONTRACT TIME, AND SUSPENSION OF WORK.** DELETE in entirety and SUBSTITUTE the following: Time is of the essence of the Contract. The Work to be done under the Contract shall be completed in its entirety within the time specified in the Contract Documents. The date of commencement will be the date established in the Notice to Proceed. If there is no Notice to Proceed, it shall be the date of the agreement signed by the Owner and the Contractor.

The Engineer may at his/her discretion recommend that the Owner extend the time for completion of the Work without invalidating any of the provisions of the Contract and without releasing the surety. Extensions of time, when recommended by Engineer, will be based upon the effect of delays to the Project as a whole and will not be recommended for non-controlling delays to minor included portions of the work unless it can be shown that such delays did, in fact, delay the progress of the Project as a whole.

Acts of God, inclement weather, governmental regulations, labor disputes, strikes, fires, required extra work or any delay totally beyond the control of the Contractor may justify an extension of time.

No extension of time for completion will be allowed for delays or suspensions caused by or contributed to by the fault or negligence of Contractor or his/her subcontractors.

All time extensions requested by Contractor shall be made to Engineer in writing on or before the tenth day following the day in which the alleged delay is said to have occurred and any claim for extension of time shall state explicitly the reasons therefore or and the number of days claimed. Should Contractor fail to file such written claim for extension of time within the period provided he/she shall have abandoned any claim therefore.

Unless otherwise provided herein, Contractor's sole remedy for any justified delay in the Work will be an extension of time and he/she will be entitled to no delay damages, wage escalation, material escalation, extended overhead, or additional compensation of any kind except for such delays as maybe caused solely by any fault of Owner of this agreement.

The Engineer by written order may suspend Work on the Project, in whole or in part, for such periods as he/she may judge necessary due to inclement weather, unforeseen emergency conditions, or to expedite public traffic. When the Work is suspended for one or more calendar days by order of the Engineer, the time for completion will be increased, except as hereinafter stated.

In those instances where the Engineer orders suspension of the Work for failure by the Contractor to carry out contractual provisions, or for failure to carry out orders given by the Engineer within the limits of the Contract, the Contractor will not be entitled to an increase in the time for completion.

#### **SECTION 109 MEASUREMENT AND PAYMENT**

**109-1.01 GENERAL.** *Add the following:* All payments requested by the Contractor shall be developed by the Contractor in a form acceptable to the Engineer. Pay estimates shall be submitted by the Contractor and approved by the Engineer.

**109-1.02 MEASUREMENT OF QUANTITIES.** *Under subtitle Electronic Computerized Weighing System item (1) add the following to the end of the first sentence:* ", CD, or a USB device."

**109-1.06 PROGRESS PAYMENTS.** *Add the following:* The City shall initiate procedures to pay the Contractor according to FGC Sec. 54-105 within fifteen (15) days after the Contractor submits to the City a bill for materials provided or services performed and a sworn statement that all employees employed on the Project by the Contractor and all subcontractors have been paid not less than the established prevailing rate of pay as determined and published by the State of Alaska, Department of Labor.

Progress payments under the Contract shall be made at the request of the Contractor based upon pay estimates to be furnished by the Contractor and approved by the Engineer. The Engineer reserves the right to alter quantities claimed in the partial estimate to reflect what are, in Engineer's opinion, the true quantities for the payment time period.

**109-1.08 FINAL PAYMENT.** *DELETE the first sentence of the first paragraph and substitute the following:* When the project has been completed as provided in Subsection 105-1.15, the Contractor will prepare for approval by the Engineer the final estimate of the quantities of the various classes of work performed.

*Add the following to the last sentence of the first paragraph:* and the Consent of Surety Company to Final Payment form is executed and received.

END OF SECTION

## **PART IV - TECHNICAL & SPECIAL PROVISION**

SECTIONS 200-700 OF THE ALASKA DEPARTMENT OF TRANSPORTATION & PUBLIC FACILITIES STANDARD SPECIFICATIONS FOR HIGHWAY CONSTRUCTION, 2017 EDITION, ARE HEREBY ADOPTED BY REFERENCE FOR THIS PROJECT, AND MODIFIED AS FOLLOWS:

**SECTION 640  
MOBILIZATION AND DEMOBILIZATION**

**640-3.01 CONSTRUCTION REQUIREMENTS.** *DELETE in its entirety and substitute the following:*

The City will provide a staging area for contractor use off 8<sup>th</sup> Avenue in the private parking stalls north of City Hall. See Appendix E for plan view of City Hall. Contractor to coordinate with Engineer prior to work to provide notice to remove vehicles, and other obstructions.

Contractor to protect existing pavement structure from potential damage. Any damage to existing pavement structure in staging area, shall be replaced at contractor's expense.

**SECTION 708  
PAINT**

*Delete Section 708 in its entirety and substitute the following:*

**708-1.01 DESCRIPTION.** Clean and prepare exterior concrete wall surface and metal staircase for installation of exterior paint per manufacturer's specifications.

**708-1.02 GENERAL REQUIREMENTS.** Ship paint in strong, substantial containers, plainly marked with the name, weight, and volume of the paint content, together with the color formula, batch number, and the name and address of the manufacturer.

Store materials in a closed weather proof, dry shelter at all times and protect from freezing.

**708-2.01 MATERIALS.**

Use the following patching material:

- Sherwin-Williams WL700GLSK – Masonry Patch and Seal Knife-Grade, Smooth

Use the following caulking material:

- Sherwin-Williams WL001360A – Caulk – Sher-MAX Ultra Urethanized Elastomeric Sealant 11 oz. White

Use the following prime spot material:

- Sherwin-Williams LX11W0051 – LOXON XP Waterproofing Masonry Coating

Use the following paint:

- Sherwin-Williams LX11W0051 – LOXON XP Waterproofing Masonry Coating Paint

**CONSTRUCTION REQUIREMENTS**

**708-3.01 PRESSURE WASH.** Pressure wash exterior concrete walls at a minimum of 4000 PSI.

**708-3.02 INSTALLATION OF PATCHING.** Install patching per manufacture's specifications and safety recommendations, see Appendix B for material cut sheet.

**708-3.03 INSTALLATION OF CAULKING.** Install caulking per manufacture's specifications and safety recommendations, see Appendix C for material cut sheet.

**708-3.04 INSTALLATION OF SPOT PRIME.** Install spot prime for patches and caulking only. Install spot prime per manufacturer's specifications and safety recommendations, see Appendix B for material cut sheet.

**708-3.05 INSTALLATION OF PAINT.** Install 1 coat applied at 14 – 18 wet mills to equal 6.5 – 8.4 mils dft (90-115 sqft/gallon). Install and apply paint per manufacturer's specifications and safety recommendations, see Appendix B for material cut sheet.

For clarification, window frames and doors painted in dark brown will not be painted under this contract.

**708-3.06 COLOR SCHEME.** Contractor to match existing colors and painting schematic. Existing colors are the following Kelly Moore paint codes that shall be matched to the Sherwin-Williams equivalence:

- Building Base: #197 Wood Moss
- Wall Paint: #36 Navajo White
- Accent Panels: #KM 556M

**708-4.01 METHOD OF MEASUREMENT.**

1. Item 708(1) Preparation of Surface. No measurement of quantities shall be made. Preparation of surface shall be Lump Sum.
2. Item 708(2) Application of New Paint. No measurement of quantities shall be made. Application of New Paint shall be Lump Sum.

**708-5.01 BASIS OF PAYMENT.**

The contract lump sum price for preparation of surface shall be full compensation for furnishing all supervision, materials, labor, and equipment necessary to prepare exterior concrete surface for paint by means of patching, caulking, and spot priming.

Contractor shall include in his bid, cost of patching damaged areas on existing building. This cost includes: pressure washing, scraping of all loose material, labor, materials, supervision, and estimation of patching based on onsite inspection. This will not be paid for separately but will be subsidiary to pay item 708(1) Preparation of Surface.

Existing signs on exterior walls shall be removed before preparation of exterior walls has begun. Protect existing threaded holes during construction. After exterior walls have been painted, existing signs shall be reinstalled. Any damage to existing signs shall be replaced at the contractor's expense. Protect in place (12) threaded bolts on the east side of the building located at the northeast and southeast corner. Fill all threaded holes on the north side of the building as directed by the Engineer. This work will not be paid for separately but is subsidiary to 708(1) Preparation of Surface.

The contract lump sum price for application of new paint shall be full compensation for furnishing all supervision, materials, labor, and equipment necessary to apply paint to the exterior concrete surface.

Install and apply paint per manufacture's specifications and safety recommendations.

Contractor to calculate and determine how many gallons of paint will be required to provide 1 coat of paint to exterior concrete surface, as detailed in subsection 708-3.02. See Appendix A for dimensions of the City Hall Building.

All work, labor, equipment, and materials required to protect wet paint during drying process will not be paid for separately but will be subsidiary to pay item 708(2) Application of New Paint.

Payment will be made under:

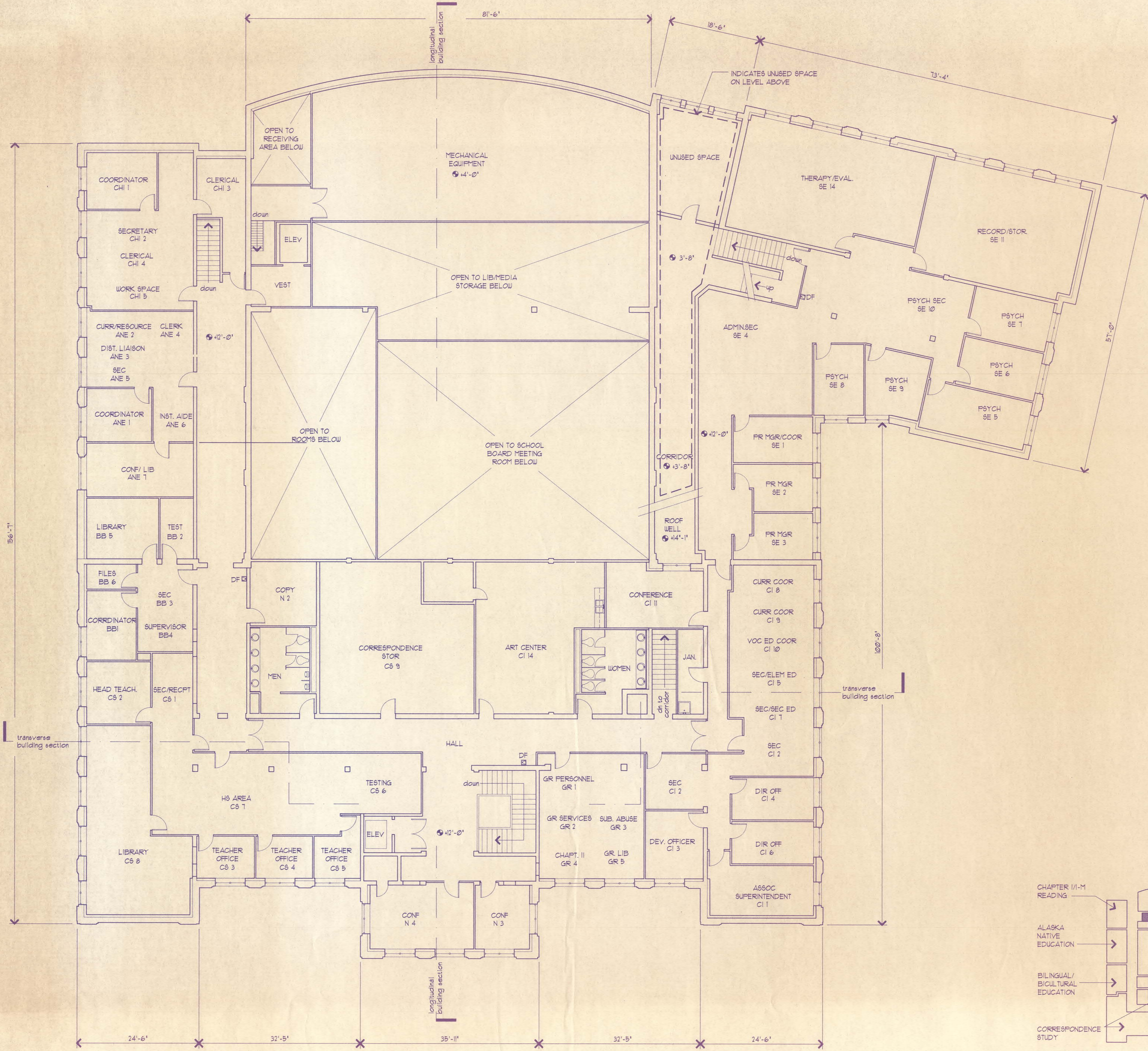
---



<b>Pay Item</b>	<b>Pay Unit</b>
708(1) Preparation of Surface	Lump Sum
708(2) Application of New Paint	Lump Sum

**APPENDIX A – CITY HALL DIMENSIONS**



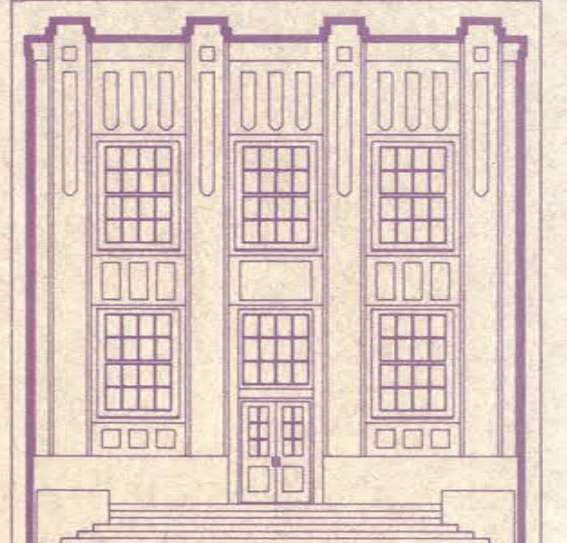
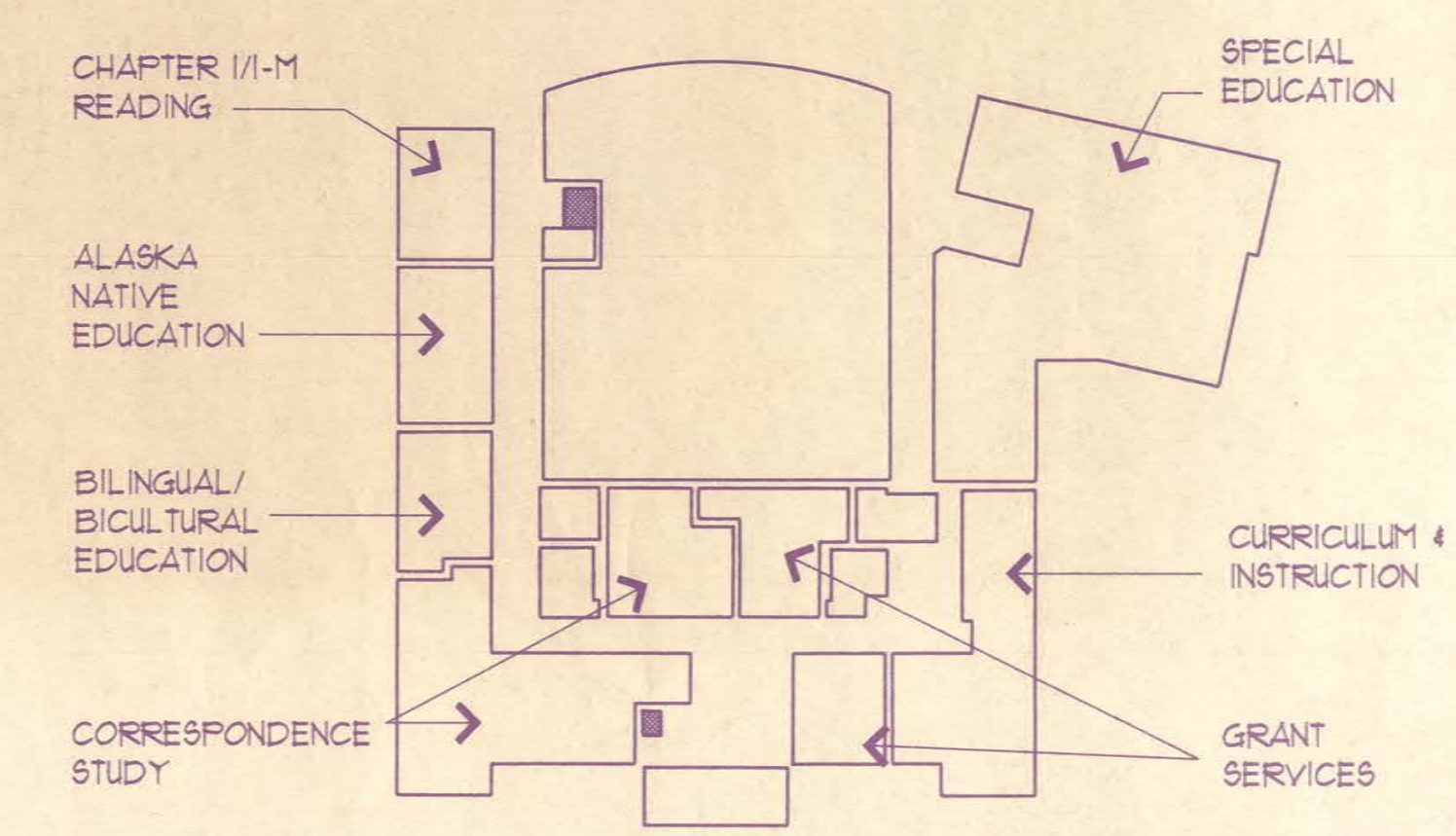


UPPER LEVEL FLOOR PLAN

SCALE: 1/8"=1'-0"



UPPER LEVEL FUNCTIONAL DIAGRAM



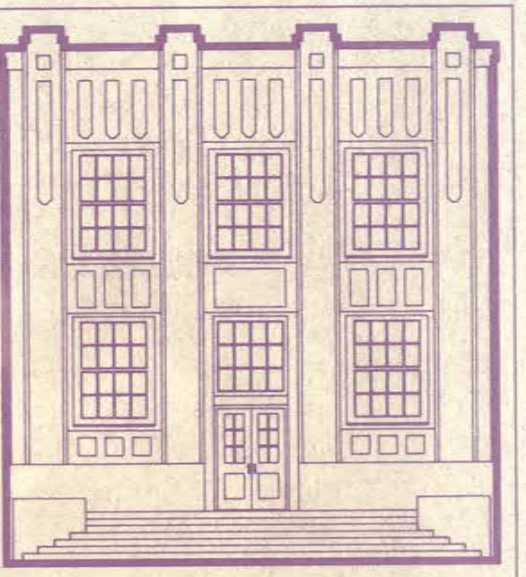
upper level plan

Administrative Office Facility  
Fairbanks North Star Borough  
School District  
Design/Build Proposal  
RFP No. 002

team no.

4



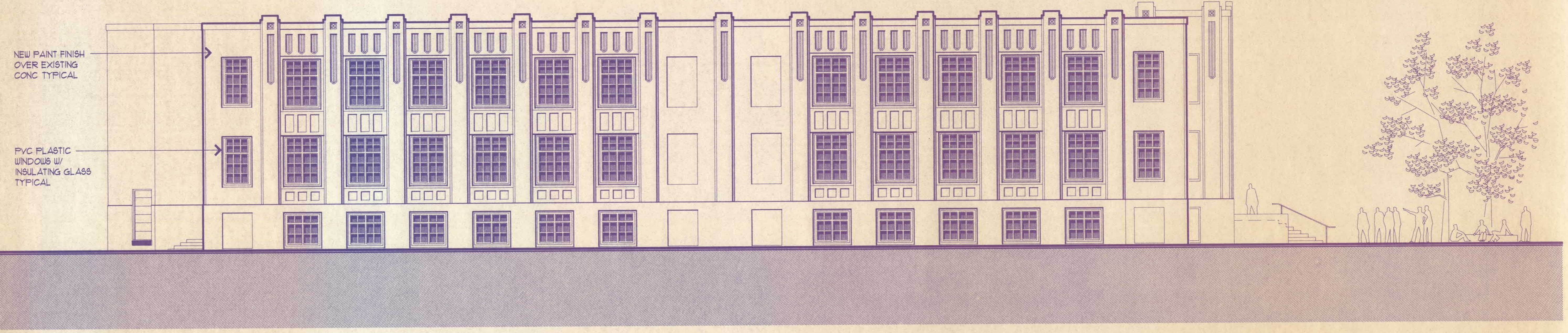


# exterior elevations

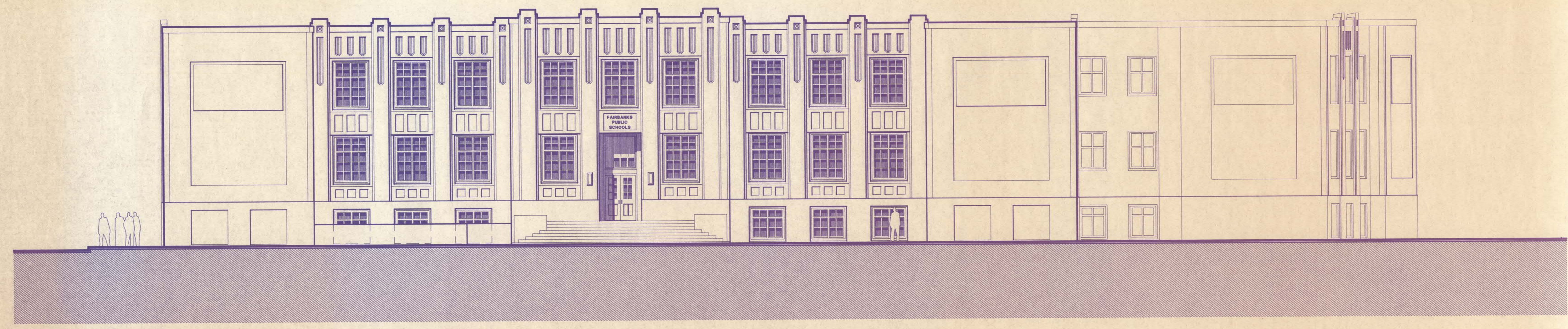
Administrative Office Facility  
Fairbanks North Star Borough  
School District  
Design/Build Proposal  
RFP No. 002

team no.

# 5

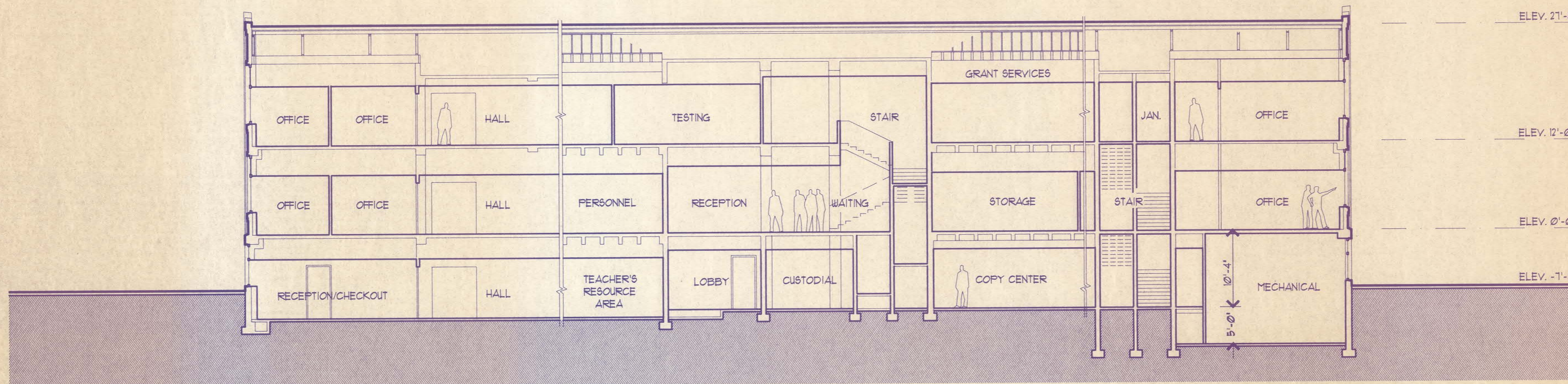


EAST ELEVATION  
SCALE: 1/8"=1'-0"



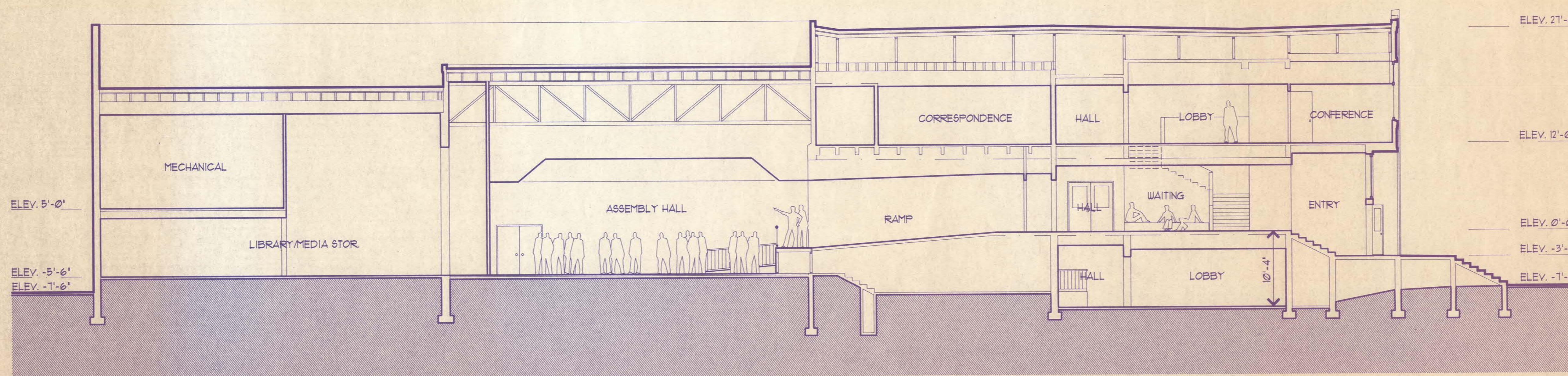
EAST ELEVATION  
SCALE: 1/8"=1'-0"  
5 0 10 20 40





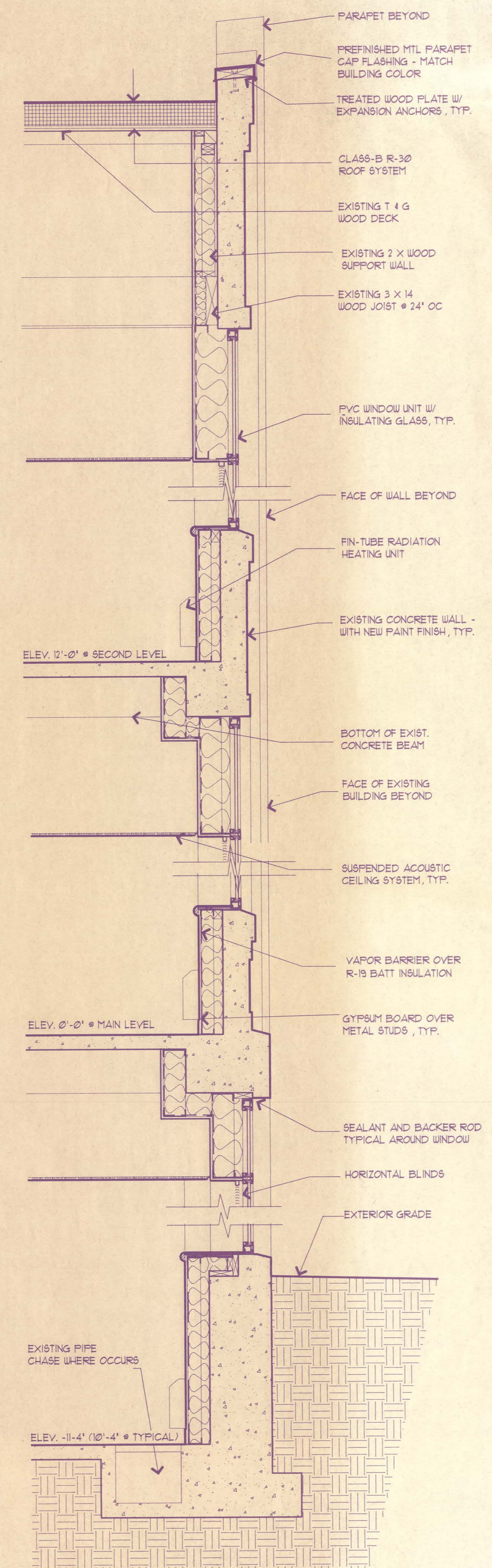
**BUILDING SECTION-TRANSVERSE**

SCALE: 1/8"=1'-0"

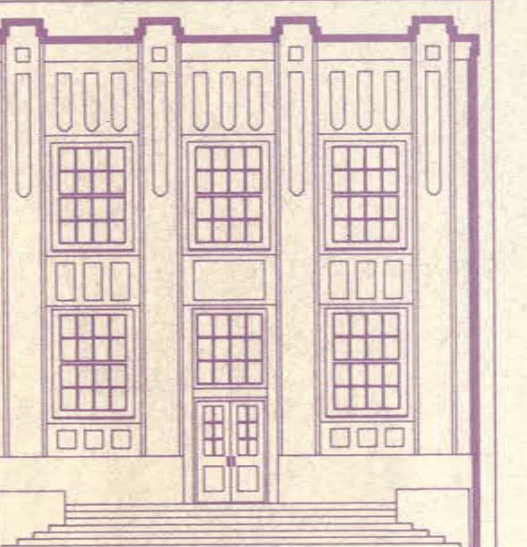


**BUILDING SECTION-LONGITUDINAL**

SCALE: 1/8"=1'-0"



**TYPICAL WALL SECTION**  
3/4" = 1'-0"



building/wall sections

Administrative Office Facility  
Fairbanks North Star Borough  
School District  
Design/Build Proposal  
RFP No. 002

team no.

6



**APPENDIX B – SHERWIN-WILLIAMS PATCHING MATERIAL SHEET**

# 112.74

## CONCRETE & MASONRY SMOOTH AND TEXTURED ELASTOMERIC PATCHES



**SHERWIN  
WILLIAMS.**

### PRODUCT DESCRIPTION

Concrete & Masonry Patches & Sealants bridge and seal cracks, joints and other openings in masonry substrates. Use to prevent further moisture penetration and damage. Products provide a repaired, paintable surface where cracks will not reappear.

### PRODUCT ADVANTAGES

- Outstanding long-term protection
- Easy workability, application and clean-up
- Flexes with substrate movement
- Works with acrylic or elastomeric topcoats
- Seals cracks measuring 1/16" to 3/8"

### FOR USE ON A WIDE VARIETY OF NON-STRUCTURAL MASONRY SUBSTRATES:

- Stucco
- EIFS
- Concrete block
- Brick
- Precast concrete
- Tilt-up concrete
- Commercial/Residential
- Interiors/Exteriors

### PRODUCT AVAILABILITY:

#### Gun-Grade Textured

WL70010GT 6501-87388

10.1 oz Cartridge

#### Gun-Grade Smooth

WL70010GS 6501-87370

10.1 oz Cartridge

#### Brush-Grade, Smooth

WL700GLSB 6501-71788

Gallon Plastic Tub

#### Brush-Grade, Textured

WL700GLTB 6501-86117

Gallon Plastic Tub

#### Knife-Grade, Smooth

WL700GLSK 6501-87347

Gallon Plastic Tub

#### Knife-Grade, Textured

WL700GLTK 6501-87362

Gallon Plastic Tub

### Color:

Off White

### Coverage:

varies with surface

### Drying Time, @ 77°F, 50% RH:

temperature and humidity dependent

Touch:

4 hours

Recoat with Concrete & Masonry Products:

24 hours

Topcoat with paint or primer:

12 hours

### Flash Point:

N/A

### Vehicle Type:

Acrylic

### VOC (less exempt solvents):

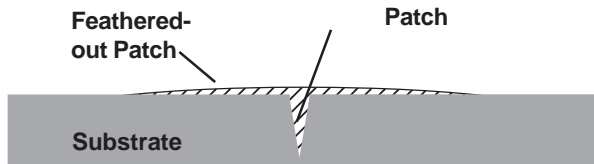
Product	Number	g/L	lb/gal
Gun-Grade Textured	WL70010GT	25	0.20
Gun-Grade Smooth	WL70010GS	25	0.20
Brush-Grade, Smooth	WL700GLSB	21	0.18
Brush-Grade, Textured	WL700GLTB	21	0.17
Knife-Grade, Smooth	WL700GLSK	25	0.20
Knife-Grade, Textured	WL700GLTK	24	0.20

# CONCRETE & MASONRY SMOOTH AND TEXTURED ELASTOMERIC PATCHES

## INSTALLATION: JOINT DESIGN

### Small openings and cracks - up to 1/16" wide

Bridge over voids and small cracks up to 1/16" wide using Concrete & Masonry Patch. To ensure that the repaired area blends into the surrounding surface, provide sufficient crest over the opening to allow for shrinkage. The Patch must be feathered to zero at the edges using a brush, knife, or trowel, to prevent the repaired opening from telegraphing through the subsequent finishes. When tooling the Patch, use dry tools, or if needed, clean water can be used with the tool. Concrete & Masonry Patch sets up quickly, tool as soon as possible to provide the smoothest appearance. Do not apply more than 1/4" in depth in one application.



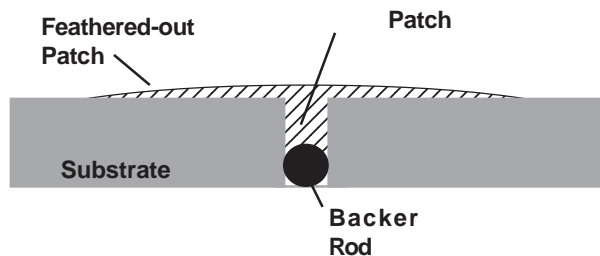
### Large Openings and Cracks - from 1/16" to 3/8" wide

Cracks and voids between 1/16" and 3/8" wide should be opened to a sound surface. Flush out the opening to remove all dust. If dust is still evident, seal the surface with Loxon® Conditioner to bind the dust to the surface.

Fill the opening with Concrete & Masonry Patch. To ensure that the repaired area blends into the surrounding surface, provide sufficient crest over the opening to allow for shrinkage. The Patch must be feathered to zero at the edges using a brush, knife, or trowel, to prevent the repaired opening from telegraphing through the subsequent finishes. When tooling the Patch, use dry tools, or if needed, clean water can be used with the tool. Concrete & Masonry Patch sets up quickly, tool as soon as possible to provide the smoothest appearance. Allow this to cure 24 hours. Do not apply more than 1/4" in depth in one application.

The depth of the opening should be 1/2 the width of the opening, with a maximum depth of 1/2". In deep openings, the depth of the Patch should be controlled with a closed cell, "non-gassing" type backer rod. The backer rod should be about 1/8" wider than the opening. Do not apply more than 1/4" in depth in one application.

If the opening is 1/4" or greater, for maximum performance, prevent 3 point adhesion with backer rods or bond breaker tape. Three point adhesion problems occur in cracks when the Patch adheres to the walls and the bottom of a crack, and a significant amount of flexibility is lost. Two point adhesion - wall to wall in a crack - using backer rods or bond breaker tape offers the maximum flexibility and performance.



## CLEANUP INFORMATION

Clean spills and spatters immediately with soap and warm water. Clean hands and tools immediately after use with soap and warm water.

## CAUTIONS

Apply at temperatures above 50°F and humidity less than 90%

Do not apply to wet, frozen or frost covered surfaces.

Protect from freezing.

Do not use below grade or underwater.

Not for use as a structural repair.

Do not use soapy water for tooling.

Avoid over-tooling which may change the final appearance.

The information and recommendations set forth in this Product Data Sheet are based upon tests conducted by or on behalf of The Sherwin-Williams Company. Such information and recommendations set forth herein are subject to change and pertain to the product offered at the time of publication. Consult your Sherwin-Williams representative to obtain the most recent Product Data Sheet.



# SAFETY DATA SHEET

WL700GLSK

## Section 1. Identification

**Product name** : Concrete & Masonry Patches & Sealants - Knife Grade Smooth

**Product code** : WL700GLSK

**Other means of identification** : Not available.

**Product type** : Liquid.

**Relevant identified uses of the substance or mixture and uses advised against**

Paint or paint related material.

**Manufacturer** : THE SHERWIN-WILLIAMS COMPANY  
101 W. Prospect Avenue  
Cleveland, OH 44115

**Emergency telephone number of the company** : US / Canada: (216) 566-2917  
Mexico: SETIQ 01-800-00-214-00 / (52) 55-5559-1588 24 hours / 365 days a year

**Product Information Telephone Number** : US / Canada: Not Available  
Mexico: Not Available

**Regulatory Information Telephone Number** : US / Canada: (216) 566-2902  
Mexico: Not Available

**Transportation Emergency Telephone Number** : US / Canada: (800) 424-9300  
Mexico: SETIQ 01-800-00-214-00 / (52) 55-5559-1588 24 hours / 365 days a year

## Section 2. Hazards identification

**OSHA/HCS status** : This material is considered hazardous by the OSHA Hazard Communication Standard (29 CFR 1910.1200).

**Classification of the substance or mixture** : SKIN CORROSION/IRRITATION - Category 2  
SERIOUS EYE DAMAGE/ EYE IRRITATION - Category 2A  
CARCINOGENICITY - Category 1A  
SPECIFIC TARGET ORGAN TOXICITY (SINGLE EXPOSURE) (Respiratory tract irritation) - Category 3  
SPECIFIC TARGET ORGAN TOXICITY (REPEATED EXPOSURE) - Category 2  
Percentage of the mixture consisting of ingredient(s) of unknown acute dermal toxicity: 1.1%  
Percentage of the mixture consisting of ingredient(s) of unknown acute inhalation toxicity: 1.1%

**GHS label elements**

**Hazard pictograms** :



**Signal word** : Danger

## Section 2. Hazards identification

**Hazard statements** : Causes serious eye irritation.  
Causes skin irritation.  
May cause cancer.  
May cause respiratory irritation.  
May cause damage to organs through prolonged or repeated exposure.

### Precautionary statements

**General** : Read label before use. Keep out of reach of children. If medical advice is needed, have product container or label at hand.

**Prevention** : Obtain special instructions before use. Do not handle until all safety precautions have been read and understood. Wear protective gloves. Wear eye or face protection. Wear protective clothing. Use only outdoors or in a well-ventilated area. Do not breathe vapor. Wash hands thoroughly after handling.

**Response** : Get medical attention if you feel unwell. IF exposed or concerned: Get medical attention. IF INHALED: Remove person to fresh air and keep comfortable for breathing. Call a POISON CENTER or physician if you feel unwell. IF ON SKIN: Wash with plenty of soap and water. Take off contaminated clothing and wash it before reuse. If skin irritation occurs: Get medical attention. IF IN EYES: Rinse cautiously with water for several minutes. Remove contact lenses, if present and easy to do. Continue rinsing. If eye irritation persists: Get medical attention.

**Storage** : Store locked up.

**Disposal** : Dispose of contents and container in accordance with all local, regional, national and international regulations.

**Supplemental label elements** WARNING: This product contains chemicals known to the State of California to cause cancer and birth defects or other reproductive harm. Adequate ventilation required when sanding or abrading the dried film. If Adequate ventilation cannot be provided wear an approved particulate respirator (NIOSH approved). Follow respirator manufacturer's directions for respirator use. DELAYED EFFECTS FROM LONG TERM OVEREXPOSURE. Abrading or sanding of the dry film may release Crystalline Silica which has been shown to cause lung damage and cancer under long term exposure. Please refer to the SDS for additional information. Keep out of reach of children. Do not transfer contents to other containers for storage.

**Hazards not otherwise classified** : None known.

## Section 3. Composition/information on ingredients

**Substance/mixture** : Mixture

**Other means of identification** : Not available.

### CAS number/other identifiers

Ingredient name	% by weight	CAS number
Calcium Carbonate	≥50 - ≤75	1317-65-3
Ethylene Glycol	≤3	107-21-1
Titanium Dioxide	≤1	13463-67-7
Crystalline Silica, respirable powder	<1	14808-60-7
Light Aliphatic Hydrocarbon	<1	64742-47-8

Any concentration shown as a range is to protect confidentiality or is due to batch variation.

**There are no additional ingredients present which, within the current knowledge of the supplier and in the concentrations applicable, are classified as hazardous to health and hence require reporting in this section.**

Occupational exposure limits, if available, are listed in Section 8.

## Section 4. First aid measures

### Description of necessary first aid measures

- Eye contact** : Immediately flush eyes with plenty of water, occasionally lifting the upper and lower eyelids. Check for and remove any contact lenses. Continue to rinse for at least 10 minutes. Get medical attention.
- Inhalation** : Remove victim to fresh air and keep at rest in a position comfortable for breathing. If it is suspected that fumes are still present, the rescuer should wear an appropriate mask or self-contained breathing apparatus. If not breathing, if breathing is irregular or if respiratory arrest occurs, provide artificial respiration or oxygen by trained personnel. It may be dangerous to the person providing aid to give mouth-to-mouth resuscitation. Get medical attention. If necessary, call a poison center or physician. If unconscious, place in recovery position and get medical attention immediately. Maintain an open airway. Loosen tight clothing such as a collar, tie, belt or waistband.
- Skin contact** : Flush contaminated skin with plenty of water. Remove contaminated clothing and shoes. Wash contaminated clothing thoroughly with water before removing it, or wear gloves. Continue to rinse for at least 10 minutes. Get medical attention. Wash clothing before reuse. Clean shoes thoroughly before reuse.
- Ingestion** : Wash out mouth with water. Remove dentures if any. Remove victim to fresh air and keep at rest in a position comfortable for breathing. If material has been swallowed and the exposed person is conscious, give small quantities of water to drink. Stop if the exposed person feels sick as vomiting may be dangerous. Do not induce vomiting unless directed to do so by medical personnel. If vomiting occurs, the head should be kept low so that vomit does not enter the lungs. Get medical attention. Never give anything by mouth to an unconscious person. If unconscious, place in recovery position and get medical attention immediately. Maintain an open airway. Loosen tight clothing such as a collar, tie, belt or waistband.

### Most important symptoms/effects, acute and delayed

#### Potential acute health effects

- Eye contact** : Causes serious eye irritation.
- Inhalation** : May cause respiratory irritation.
- Skin contact** : Causes skin irritation.
- Ingestion** : No known significant effects or critical hazards.

#### Over-exposure signs/symptoms

- Eye contact** : Adverse symptoms may include the following:  
pain or irritation  
watering  
redness
- Inhalation** : Adverse symptoms may include the following:  
respiratory tract irritation  
coughing
- Skin contact** : Adverse symptoms may include the following:  
irritation  
redness
- Ingestion** : No specific data.

### Indication of immediate medical attention and special treatment needed, if necessary

- Notes to physician** : Treat symptomatically. Contact poison treatment specialist immediately if large quantities have been ingested or inhaled.
- Specific treatments** : No specific treatment.

## Section 4. First aid measures

- Protection of first-aiders** : No action shall be taken involving any personal risk or without suitable training. If it is suspected that fumes are still present, the rescuer should wear an appropriate mask or self-contained breathing apparatus. It may be dangerous to the person providing aid to give mouth-to-mouth resuscitation. Wash contaminated clothing thoroughly with water before removing it, or wear gloves.

See toxicological information (Section 11)

## Section 5. Fire-fighting measures

### Extinguishing media

- Suitable extinguishing media** : Use an extinguishing agent suitable for the surrounding fire.

- Unsuitable extinguishing media** : None known.

- Specific hazards arising from the chemical** : In a fire or if heated, a pressure increase will occur and the container may burst.

- Hazardous thermal decomposition products** : Decomposition products may include the following materials:  
carbon dioxide  
carbon monoxide  
metal oxide/oxides

- Special protective actions for fire-fighters** : Promptly isolate the scene by removing all persons from the vicinity of the incident if there is a fire. No action shall be taken involving any personal risk or without suitable training.

- Special protective equipment for fire-fighters** : Fire-fighters should wear appropriate protective equipment and self-contained breathing apparatus (SCBA) with a full face-piece operated in positive pressure mode.

## Section 6. Accidental release measures

### Personal precautions, protective equipment and emergency procedures

- For non-emergency personnel** : No action shall be taken involving any personal risk or without suitable training. Evacuate surrounding areas. Keep unnecessary and unprotected personnel from entering. Do not touch or walk through spilled material. Avoid breathing vapor or mist. Provide adequate ventilation. Wear appropriate respirator when ventilation is inadequate. Put on appropriate personal protective equipment.

- For emergency responders** : If specialized clothing is required to deal with the spillage, take note of any information in Section 8 on suitable and unsuitable materials. See also the information in "For non-emergency personnel".

- Environmental precautions** : Avoid dispersal of spilled material and runoff and contact with soil, waterways, drains and sewers. Inform the relevant authorities if the product has caused environmental pollution (sewers, waterways, soil or air).

### Methods and materials for containment and cleaning up

- Small spill** : Stop leak if without risk. Move containers from spill area. Dilute with water and mop up if water-soluble. Alternatively, or if water-insoluble, absorb with an inert dry material and place in an appropriate waste disposal container. Dispose of via a licensed waste disposal contractor.

## Section 6. Accidental release measures

- Large spill** : Stop leak if without risk. Move containers from spill area. Approach release from upwind. Prevent entry into sewers, water courses, basements or confined areas. Wash spillages into an effluent treatment plant or proceed as follows. Contain and collect spillage with non-combustible, absorbent material e.g. sand, earth, vermiculite or diatomaceous earth and place in container for disposal according to local regulations (see Section 13). Dispose of via a licensed waste disposal contractor. Contaminated absorbent material may pose the same hazard as the spilled product. Note: see Section 1 for emergency contact information and Section 13 for waste disposal.

## Section 7. Handling and storage

### Precautions for safe handling

- Protective measures** : Put on appropriate personal protective equipment (see Section 8). Avoid exposure - obtain special instructions before use. Do not handle until all safety precautions have been read and understood. Do not get in eyes or on skin or clothing. Do not breathe vapor or mist. Do not ingest. Use only with adequate ventilation. Wear appropriate respirator when ventilation is inadequate. Keep in the original container or an approved alternative made from a compatible material, kept tightly closed when not in use. Empty containers retain product residue and can be hazardous. Do not reuse container.

- Advice on general occupational hygiene** : Eating, drinking and smoking should be prohibited in areas where this material is handled, stored and processed. Workers should wash hands and face before eating, drinking and smoking. Remove contaminated clothing and protective equipment before entering eating areas. See also Section 8 for additional information on hygiene measures.

- Conditions for safe storage, including any incompatibilities** : Store in accordance with local regulations. Store in original container protected from direct sunlight in a dry, cool and well-ventilated area, away from incompatible materials (see Section 10) and food and drink. Store locked up. Keep container tightly closed and sealed until ready for use. Containers that have been opened must be carefully resealed and kept upright to prevent leakage. Do not store in unlabeled containers. Use appropriate containment to avoid environmental contamination. See Section 10 for incompatible materials before handling or use.

## Section 8. Exposure controls/personal protection

### Control parameters

#### Occupational exposure limits (OSHA United States)

Ingredient name	CAS #	Exposure limits
Calcium Carbonate	1317-65-3	<b>OSHA PEL (United States, 5/2018).</b> TWA: 5 mg/m <sup>3</sup> 8 hours. Form: Respirable fraction TWA: 15 mg/m <sup>3</sup> 8 hours. Form: Total dust <b>NIOSH REL (United States, 10/2016).</b> TWA: 5 mg/m <sup>3</sup> 10 hours. Form: Respirable fraction TWA: 10 mg/m <sup>3</sup> 10 hours. Form: Total
Ethylene Glycol	107-21-1	<b>ACGIH TLV (United States, 3/2018).</b> STEL: 10 mg/m <sup>3</sup> 15 minutes. Form: Inhalable fraction. Aerosol only. STEL: 50 ppm 15 minutes. Form: Vapor fraction TWA: 25 ppm 8 hours. Form: Vapor fraction
Titanium Dioxide	13463-67-7	<b>ACGIH TLV (United States, 3/2018).</b> TWA: 10 mg/m <sup>3</sup> 8 hours. <b>OSHA PEL (United States, 5/2018).</b> TWA: 15 mg/m <sup>3</sup> 8 hours. Form: Total dust

## Section 8. Exposure controls/personal protection

Crystalline Silica, respirable powder	14808-60-7	<p><b>OSHA PEL Z3 (United States, 6/2016).</b> TWA: 250 mppcf / (%SiO<sub>2</sub>+5) 8 hours. Form: Respirable</p> <p>TWA: 10 mg/m<sup>3</sup> / (%SiO<sub>2</sub>+2) 8 hours. Form: Respirable</p> <p><b>OSHA PEL (United States, 5/2018).</b> TWA: 50 µg/m<sup>3</sup> 8 hours. Form: Respirable dust</p> <p><b>ACGIH TLV (United States, 3/2018).</b> TWA: 0.025 mg/m<sup>3</sup> 8 hours. Form: Respirable fraction</p> <p><b>NIOSH REL (United States, 10/2016).</b> TWA: 0.05 mg/m<sup>3</sup> 10 hours. Form: respirable dust</p>
Light Aliphatic Hydrocarbon	64742-47-8	<p><b>ACGIH TLV (United States, 3/2018).</b> <b>Absorbed through skin.</b> TWA: 200 mg/m<sup>3</sup>, (as total hydrocarbon vapor) 8 hours.</p>

### Occupational exposure limits (Canada)

Ingredient name	CAS #	Exposure limits
Limestone	1317-65-3	<p><b>CA British Columbia Provincial (Canada, 7/2018).</b> TWA: 3 mg/m<sup>3</sup> 8 hours. Form: Respirable dust TWA: 10 mg/m<sup>3</sup> 8 hours. Form: Total dust STEL: 20 mg/m<sup>3</sup> 15 minutes.</p> <p><b>CA Alberta Provincial (Canada, 6/2018).</b> 8 hrs OEL: 10 mg/m<sup>3</sup> 8 hours.</p> <p><b>CA Quebec Provincial (Canada, 1/2014).</b> TWA<sub>EV</sub>: 10 mg/m<sup>3</sup> 8 hours. Form: Total dust.</p> <p><b>CA Saskatchewan Provincial (Canada, 7/2013).</b> STEL: 20 mg/m<sup>3</sup> 15 minutes. TWA: 10 mg/m<sup>3</sup> 8 hours.</p>
Ethylene glycol	107-21-1	<p><b>CA British Columbia Provincial (Canada, 7/2018).</b> C: 100 mg/m<sup>3</sup> Form: Aerosol TWA: 10 mg/m<sup>3</sup> 8 hours. Form: Particulate STEL: 20 mg/m<sup>3</sup> 15 minutes. Form: Particulate C: 50 ppm Form: Vapour</p> <p><b>CA Ontario Provincial (Canada, 1/2018).</b> C: 100 mg/m<sup>3</sup> Form: Aerosol only.</p> <p><b>CA Saskatchewan Provincial (Canada, 7/2013).</b> CEIL: 100 mg/m<sup>3</sup> Form: aerosol</p> <p><b>CA Alberta Provincial (Canada, 6/2018).</b> C: 100 mg/m<sup>3</sup></p> <p><b>CA Quebec Provincial (Canada, 1/2014).</b> STEV: 50 ppm 15 minutes. Form: vapour and mist STEV: 127 mg/m<sup>3</sup> 15 minutes. Form: vapour and mist</p>
Titanium dioxide	13463-67-7	<p><b>CA British Columbia Provincial (Canada, 7/2018).</b></p>

## Section 8. Exposure controls/personal protection

Quartz	14808-60-7	<p>TWA: 3 mg/m<sup>3</sup> 8 hours. Form: Respirable dust</p> <p>TWA: 10 mg/m<sup>3</sup> 8 hours. Form: Total dust  <b>CA Quebec Provincial (Canada, 1/2014).</b></p> <p>TWAEV: 10 mg/m<sup>3</sup> 8 hours. Form: Total dust.  <b>CA Alberta Provincial (Canada, 6/2018).</b></p> <p>8 hrs OEL: 10 mg/m<sup>3</sup> 8 hours.  <b>CA Ontario Provincial (Canada, 1/2018).</b></p> <p>TWA: 10 mg/m<sup>3</sup> 8 hours.  <b>CA Saskatchewan Provincial (Canada, 7/2013).</b></p> <p>STEL: 20 mg/m<sup>3</sup> 15 minutes.  TWA: 10 mg/m<sup>3</sup> 8 hours.</p> <p><b>CA British Columbia Provincial (Canada, 7/2018).</b></p> <p>TWA: 0.025 mg/m<sup>3</sup> 8 hours. Form: Respirable</p> <p><b>CA Quebec Provincial (Canada, 1/2014).</b></p> <p>TWAEV: 0.1 mg/m<sup>3</sup> 8 hours. Form: Respirable dust.</p> <p><b>CA Ontario Provincial (Canada, 1/2018).</b></p> <p>TWA: 0.1 mg/m<sup>3</sup> 8 hours. Form: Respirable fraction.</p> <p><b>CA Alberta Provincial (Canada, 6/2018).</b></p> <p>8 hrs OEL: 0.025 mg/m<sup>3</sup> 8 hours. Form: Respirable particulate</p> <p><b>CA Saskatchewan Provincial (Canada, 7/2013).</b></p> <p>TWA: 0.05 mg/m<sup>3</sup> 8 hours. Form: respirable fraction</p>
--------	------------	--

### Occupational exposure limits (Mexico)

	CAS #	Exposure limits
ethanediol	107-21-1	<b>NOM-010-STPS-2014 (Mexico, 4/2016).</b> CEIL: 100 mg/m <sup>3</sup> Form: Only AEROSOL

**Appropriate engineering controls** : Use only with adequate ventilation. If user operations generate dust, fumes, gas, vapor or mist, use process enclosures, local exhaust ventilation or other engineering controls to keep worker exposure to airborne contaminants below any recommended or statutory limits.

**Environmental exposure controls** : Emissions from ventilation or work process equipment should be checked to ensure they comply with the requirements of environmental protection legislation. In some cases, fume scrubbers, filters or engineering modifications to the process equipment will be necessary to reduce emissions to acceptable levels.

### Individual protection measures

**Hygiene measures** : Wash hands, forearms and face thoroughly after handling chemical products, before eating, smoking and using the lavatory and at the end of the working period. Appropriate techniques should be used to remove potentially contaminated clothing. Wash contaminated clothing before reusing. Ensure that eyewash stations and safety showers are close to the workstation location.

**Eye/face protection** : Safety eyewear complying with an approved standard should be used when a risk assessment indicates this is necessary to avoid exposure to liquid splashes, mists, gases or dusts. If contact is possible, the following protection should be worn, unless the assessment indicates a higher degree of protection: chemical splash goggles.

### Skin protection



## Section 8. Exposure controls/personal protection

- Hand protection** : Chemical-resistant, impervious gloves complying with an approved standard should be worn at all times when handling chemical products if a risk assessment indicates this is necessary. Considering the parameters specified by the glove manufacturer, check during use that the gloves are still retaining their protective properties. It should be noted that the time to breakthrough for any glove material may be different for different glove manufacturers. In the case of mixtures, consisting of several substances, the protection time of the gloves cannot be accurately estimated.
- Body protection** : Personal protective equipment for the body should be selected based on the task being performed and the risks involved and should be approved by a specialist before handling this product.
- Other skin protection** : Appropriate footwear and any additional skin protection measures should be selected based on the task being performed and the risks involved and should be approved by a specialist before handling this product.
- Respiratory protection** : Based on the hazard and potential for exposure, select a respirator that meets the appropriate standard or certification. Respirators must be used according to a respiratory protection program to ensure proper fitting, training, and other important aspects of use.

## Section 9. Physical and chemical properties

### Appearance

- Physical state** : Liquid.
- Color** : Not available.
- Odor** : Not available.
- Odor threshold** : Not available.
- pH** : 8.3
- Melting point/freezing point** : Not available.
- Boiling point/boiling range** : 100°C (212°F)
- Flash point** : Closed cup: >94°C (>201.2°F)
- Evaporation rate** : 0.09 (butyl acetate = 1)
- Flammability (solid, gas)** : Not available.
- Lower and upper explosive (flammable) limits** : Lower: 3.2%  
Upper: 15.3%
- Vapor pressure** : 2.3 kPa (17.5 mm Hg) [at 20°C]
- Vapor density** : 1 [Air = 1]
- Relative density** : 1.57
- Solubility** : Not available.
- Partition coefficient: n-octanol/water** : Not available.
- Auto-ignition temperature** : Not available.
- Decomposition temperature** : Not available.
- Viscosity** : Kinematic (40°C (104°F)): >0.205 cm<sup>2</sup>/s (>20.5 cSt)
- Molecular weight** : Not applicable.
- Aerosol product**
- Heat of combustion** : 1.317 kJ/g



## Section 10. Stability and reactivity

- Reactivity** : No specific test data related to reactivity available for this product or its ingredients.
- Chemical stability** : The product is stable.
- Possibility of hazardous reactions** : Under normal conditions of storage and use, hazardous reactions will not occur.
- Conditions to avoid** : No specific data.
- Incompatible materials** : No specific data.
- Hazardous decomposition products** : Under normal conditions of storage and use, hazardous decomposition products should not be produced.

## Section 11. Toxicological information

### Information on toxicological effects

#### Acute toxicity

Product/ingredient name	Result	Species	Dose	Exposure
Ethylene Glycol	LD50 Oral	Rat	4700 mg/kg	-

#### Irritation/Corrosion

Product/ingredient name	Result	Species	Score	Exposure	Observation
Ethylene Glycol	Eyes - Mild irritant	Rabbit	-	24 hours 500 milligrams	-
	Eyes - Mild irritant	Rabbit	-	1 hours 100 milligrams	-
	Eyes - Moderate irritant	Rabbit	-	6 hours 1440 milligrams	-
	Skin - Mild irritant	Rabbit	-	555 milligrams	-
Titanium Dioxide	Skin - Mild irritant	Human	-	72 hours 300 Micrograms Intermittent	-

#### Sensitization

Not available.

#### Mutagenicity

Not available.

#### Carcinogenicity

Not available.

#### Classification

Product/ingredient name	OSHA	IARC	NTP
Titanium Dioxide	-	2B	-
Crystalline Silica, respirable powder	-	1	Known to be a human carcinogen.

#### Reproductive toxicity

Not available.

#### Teratogenicity

## Section 11. Toxicological information

Not available.

### Specific target organ toxicity (single exposure)

Name	Category	Route of exposure	Target organs
Calcium Carbonate	Category 3	Not applicable.	Respiratory tract irritation
Ethylene Glycol	Category 3	Not applicable.	Narcotic effects
	Category 3	Not applicable.	Respiratory tract irritation
Light Aliphatic Hydrocarbon	Category 3	Not applicable.	Narcotic effects
	Category 3	Not applicable.	Respiratory tract irritation

### Specific target organ toxicity (repeated exposure)

Name	Category	Route of exposure	Target organs
Ethylene Glycol	Category 2	Not determined	Not determined
Crystalline Silica, respirable powder	Category 1	Inhalation	Not determined
Light Aliphatic Hydrocarbon	Category 2	Not determined	Not determined

### Aspiration hazard

Name	Result
Light Aliphatic Hydrocarbon	ASPIRATION HAZARD - Category 1

**Information on the likely routes of exposure** : Not available.

### Potential acute health effects

- Eye contact** : Causes serious eye irritation.
- Inhalation** : May cause respiratory irritation.
- Skin contact** : Causes skin irritation.
- Ingestion** : No known significant effects or critical hazards.

### Symptoms related to the physical, chemical and toxicological characteristics

- Eye contact** : Adverse symptoms may include the following:  
pain or irritation  
watering  
redness
- Inhalation** : Adverse symptoms may include the following:  
respiratory tract irritation  
coughing
- Skin contact** : Adverse symptoms may include the following:  
irritation  
redness
- Ingestion** : No specific data.

### Delayed and immediate effects and also chronic effects from short and long term exposure

#### Short term exposure

- Potential immediate effects** : Not available.
- Potential delayed effects** : Not available.

## Section 11. Toxicological information

### Long term exposure

**Potential immediate effects** : Not available.

**Potential delayed effects** : Not available.

### Potential chronic health effects

Not available.

**General** : May cause damage to organs through prolonged or repeated exposure.  
**Carcinogenicity** : May cause cancer. Risk of cancer depends on duration and level of exposure.  
**Mutagenicity** : No known significant effects or critical hazards.  
**Teratogenicity** : No known significant effects or critical hazards.  
**Developmental effects** : No known significant effects or critical hazards.  
**Fertility effects** : No known significant effects or critical hazards.

### Numerical measures of toxicity

#### Acute toxicity estimates

Route	ATE value
Oral	44851.11 mg/kg

## Section 12. Ecological information

### Toxicity

Product/ingredient name	Result	Species	Exposure
Ethylene Glycol	Acute LC50 6900000 µg/l Fresh water	Crustaceans - Ceriodaphnia dubia - Neonate	48 hours
	Acute LC50 41000000 µg/l Fresh water	Daphnia - Daphnia magna - Neonate	48 hours
Titanium Dioxide	Acute LC50 8050000 µg/l Fresh water	Fish - Pimephales promelas	96 hours
	Acute LC50 >1000000 µg/l Marine water	Fish - Fundulus heteroclitus	96 hours
Light Aliphatic Hydrocarbon	Acute LC50 2200 µg/l Fresh water	Fish - Lepomis macrochirus	4 days

### Persistence and degradability

Product/ingredient name	Aquatic half-life	Photolysis	Biodegradability
Ethylene Glycol	-	-	Readily

### Bioaccumulative potential

Not available.

### Mobility in soil

**Soil/water partition coefficient (K<sub>oc</sub>)** : Not available.

**Other adverse effects** : No known significant effects or critical hazards.

## Section 13. Disposal considerations

**Disposal methods** : The generation of waste should be avoided or minimized wherever possible. Disposal of this product, solutions and any by-products should at all times comply with the requirements of environmental protection and waste disposal legislation and any regional local authority requirements. Dispose of surplus and non-recyclable products via a licensed waste disposal contractor. Waste should not be disposed of untreated to the sewer unless fully compliant with the requirements of all authorities with jurisdiction. Waste packaging should be recycled. Incineration or landfill should only be considered when recycling is not feasible. This material and its container must be disposed of in a safe way. Care should be taken when handling emptied containers that have not been cleaned or rinsed out. Empty containers or liners may retain some product residues. Avoid dispersal of spilled material and runoff and contact with soil, waterways, drains and sewers.

## Section 14. Transport information

	<b>DOT Classification</b>	<b>TDG Classification</b>	<b>Mexico Classification</b>	<b>IATA</b>	<b>IMDG</b>
<b>UN number</b>	Not regulated.	Not regulated.	Not regulated.	Not regulated.	Not regulated.
<b>UN proper shipping name</b>	-	-	-	-	-
<b>Transport hazard class(es)</b>	-	-	-	-	-
<b>Packing group</b>	-	-	-	-	-
<b>Environmental hazards</b>	No.	No.	No.	No.	No.
<b>Additional information</b>	-	-	-	-	-

**Special precautions for user** : Multi-modal shipping descriptions are provided for informational purposes and do not consider container sizes. The presence of a shipping description for a particular mode of transport (sea, air, etc.), does not indicate that the product is packaged suitably for that mode of transport. All packaging must be reviewed for suitability prior to shipment, and compliance with the applicable regulations is the sole responsibility of the person offering the product for transport. People loading and unloading dangerous goods must be trained on all of the risks deriving from the substances and on all actions in case of emergency situations.

**Transport in bulk according to Annex II of MARPOL and the IBC Code** : Not available.

**Proper shipping name** : Not available.

**Ship type** : Not available.

**Pollution category** : Not available.

## Section 15. Regulatory information

### [SARA 313](#)

SARA 313 (40 CFR 372.45) supplier notification can be found on the Environmental Data Sheet.

### [California Prop. 65](#)

WARNING: This product contains chemicals known to the State of California to cause cancer and birth defects or other reproductive harm.

### [International regulations](#)

#### [International lists](#)

: **Australia inventory (AICS):** Not determined.  
**China inventory (IECSC):** Not determined.  
**Japan inventory (ENCS):** Not determined.  
**Japan inventory (ISHL):** Not determined.  
**Korea inventory (KECI):** Not determined.  
**New Zealand Inventory of Chemicals (NZIoC):** Not determined.  
**Philippines inventory (PICCS):** Not determined.  
**Taiwan Chemical Substances Inventory (TCSI):** Not determined.  
**Thailand inventory:** Not determined.  
**Turkey inventory:** Not determined.  
**Vietnam inventory:** Not determined.

## Section 16. Other information

### [Hazardous Material Information System \(U.S.A.\)](#)

Health	*	2
Flammability		0
Physical hazards		0

The customer is responsible for determining the PPE code for this material. For more information on HMIS® Personal Protective Equipment (PPE) codes, consult the HMIS® Implementation Manual.

Caution: HMIS® ratings are based on a 0-4 rating scale, with 0 representing minimal hazards or risks, and 4 representing significant hazards or risks. Although HMIS® ratings and the associated label are not required on SDSs or products leaving a facility under 29 CFR 1910.1200, the preparer may choose to provide them. HMIS® ratings are to be used with a fully implemented HMIS® program. HMIS® is a registered trademark and service mark of the American Coatings Association, Inc.

### [Procedure used to derive the classification](#)

Classification	Justification
SKIN CORROSION/IRRITATION - Category 2	Calculation method
SERIOUS EYE DAMAGE/ EYE IRRITATION - Category 2A	Calculation method
CARCINOGENICITY - Category 1A	Calculation method
SPECIFIC TARGET ORGAN TOXICITY (SINGLE EXPOSURE) (Respiratory tract irritation) - Category 3	Calculation method
SPECIFIC TARGET ORGAN TOXICITY (REPEATED EXPOSURE) - Category 2	Calculation method

### [History](#)

**Date of printing** : 7/24/2019  
**Date of issue/Date of revision** : 7/24/2019  
**Date of previous issue** : 5/10/2019  
**Version** : 13

## Section 16. Other information

### Key to abbreviations

: ATE = Acute Toxicity Estimate  
BCF = Bioconcentration Factor  
GHS = Globally Harmonized System of Classification and Labelling of Chemicals  
IATA = International Air Transport Association  
IBC = Intermediate Bulk Container  
IMDG = International Maritime Dangerous Goods  
LogPow = logarithm of the octanol/water partition coefficient  
MARPOL = International Convention for the Prevention of Pollution From Ships, 1973 as modified by the Protocol of 1978. ("Marpol" = marine pollution)  
N/A = Not available  
SGG = Segregation Group  
UN = United Nations

✔ Indicates information that has changed from previously issued version.

### Notice to reader

It is recommended that each customer or recipient of this Safety Data Sheet (SDS) study it carefully and consult resources, as necessary or appropriate, to become aware of and understand the data contained in this SDS and any hazards associated with the product. This information is provided in good faith and believed to be accurate as of the effective date herein. However, no warranty, express or implied, is given. The information presented here applies only to the product as shipped. The addition of any material can change the composition, hazards and risks of the product. Products shall not be repackaged, modified, or tinted except as specifically instructed by the manufacturer, including but not limited to the incorporation of products not specified by the manufacturer, or the use or addition of products in proportions not specified by the manufacturer. Regulatory requirements are subject to change and may differ between various locations and jurisdictions. The customer/buyer/user is responsible to ensure that his activities comply with all country, federal, state, provincial or local laws. The conditions for use of the product are not under the control of the manufacturer; the customer/buyer/user is responsible to determine the conditions necessary for the safe use of this product. The customer/buyer/user should not use the product for any purpose other than the purpose shown in the applicable section of this SDS without first referring to the supplier and obtaining written handling instructions. Due to the proliferation of sources for information such as manufacturer-specific SDS, the manufacturer cannot be responsible for SDSs obtained from any other source.

**APPENDIX C – SHERWIN-WILLIAMS CAULKING MATERIAL SHEET**



**SHERWIN  
WILLIAMS.**

# Sher-MAX™ Urethanized Elastomeric Sealant

## PRODUCT DESCRIPTION

The SHER-MAX™ formulation features Superlastic™ technology. This Sherwin-Williams exclusive technology provides maximum flexibility and performance making SHER-MAX™ our best latex choice for most interior and exterior applications. Unique to the latex sealant industry, SHER-MAX™ is a Class 35 sealant, which allows for a total 70% joint movement capability!

## BASIC USES

For use on: crown molding, wood trim, chimneys, doors, ducts, windows, masonry, siding board and most exterior sealing.

- Excellent for high movement/high stress areas
- Urethanized for superior adhesion
- 70% total joint movement

## SPECIFICATION COMPLIANCE

Tested at Riverbank Acoustical Laboratories in accordance with ASTM E90 and C-919, this product was sound tested and proven to be an integral component in maintaining STC/MTC partition ratings. It has also been tested in accordance with ASTM C-834 and D-217.

Sher-MAX™ Urethanized Premium Elastomeric Sealant meets or exceeds the test requirements of:

- Federal Spec. TT-S-00230C, Type II, Class A
- ASTM C-920, Class 35

## PRODUCT AVAILABILITY

Color	SMIS Number	Size
White	133-5223	10 fl oz
Clear	163-2017	10 fl oz
White	163-7909	5 Gallon

## Properties

Vehicle:	Acrylic Polymer
Color:	Brilliant White and Clear
Extrudability:	Excellent
Exterior Weather:	Will not crack, discolor or lose adhesion
Sag ASTM C2202:	0.15 in. maximum
Freeze-thaw:	Passes 5 cycles
Mildew resistance:	Resists mildew growth
VOC	0.49% by weight

## Performance Specification for GreenSure Branding:

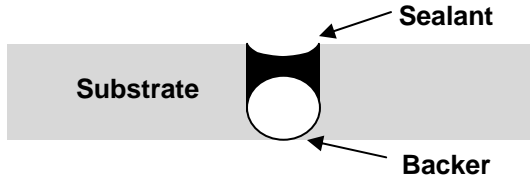
Product has been tested to meet ASTM Specification C920 (C719 testing for cyclic movement ensures airtight, flexible seal). Product has been formulated to be virtually VOC-free (under ½ of 1% of VOC content), exceeding the most stringent VOC regulations relating to the caulking industry. Product packaging contains at least 25% post-consumer-recycled content.



# Sher-MAX™ Urethanized Elastomeric Sealant

## PREPARATION & USE

**JOINT DESIGN:** Joints should not be more than 1/2" in width or depth. Joints deeper than 1/2" should be filled to within 1/2" of the surface with polyethylene foam filler/backer rod.



**PREPARATION:** Surfaces to be caulked/sealed must be clean, dry and free from oils, loose mortar, laitance, form release agents, old caulking, old paint or other contaminants. Allow new concrete to cure for 30 days before caulking.

**MASKING:** Mask areas that are not to be caulked/sealed. Remove masking immediately after tooling BEFORE a skin has formed on the caulk/sealant.

**APPLICATION:** Cut nozzle at 45° angle to the desired orifice /bead size. Load cartridge into a caulk gun and puncture the inner seal. Squeeze trigger to start flow of material. Keep nozzle pressed against the surface and slowly draw along seam. Apply a uniform, continuous bead.

**TOOLING:** Tool caulk with appropriate tool to ensure firm, full contact with the surface or the joint. If necessary, smooth the surface with wet finger or spatula and wipe off the excess with a water-dampened rag.

**PRIMING:** For best results, priming is recommended prior to caulking. Determine the primer based on the substrate, any topcoat, and any required performance.

**PAINTING:** (Temperature and Humidity Dependent) Can be painted after 30 minutes at 75°F and 50% relative humidity. For best results, a minimum of 4 hours dry time is required before painting with latex or oil base paint. Allow extra dry time during periods of high humidity and/or cool temperatures.

Always use a shellac sealer before applying lacquer.

**CLEAN-UP:** Clean tools and excess sealant with soap and water or a damp cloth while still wet.

## LIMITATIONS

Not for use below grade, on aquariums, or for marine use below the water line.

Never use in architectural joints, joints subject to heavy abrasion, wear or joints frequently under water. Apply at temperatures above 40°F.

For indoor and exterior use.

Do not apply when rain or moisture is expected.

Do not apply to frozen or frost covered surfaces.

Protect from freezing.

## SHELF LIFE

This sealant has a shelf life of 12 months from the date of manufacture when stored at room temperature.

## PRECAUTIONS

Use only with adequate ventilation. Avoid contact with eyes and skin. Wash hands after using. Do not transfer contents to other containers for storage. In case of eye contact, flush with water. Get medical attention if irritation persists. If swallowed, get medical attention immediately. **DO NOT TAKE INTERNALLY. KEEP OUT OF THE REACH OF CHILDREN.**

Tested at Riverbank Acoustical Laboratories in accordance with ASTM E90 and C-919, this product was sound tested and proven to be an integral component in maintaining STC/MTC partition ratings.

It has also been tested in accordance with ASTM C-834 and D-217.

Coverage in Lineal Feet One cartridge (10, 10.1, 10.3 fl. oz.)					
		Depth in Inches			
		1/8"	1/4"	3/8"	1/2"
Width in inches	1/8"	99			
	1/4"	49	24		
	3/8"	33	20	11	
	1/2"	24	12	8	6
	5/8"	20	10	7	5
	3/4"	16	8	6	4
	7/8"	14	7	5	4
	1"	12	6	4	3

When using this reference chart, you **MUST** consider the physical limitations of the product you are using. Not all products can be used in the gap sizes shown.

# SAFETY DATA SHEET

133-5223

## Section 1. Identification

**Product name** : SHER-MAX™ ULTRA Urethanized Elastomeric Sealant  
White

**Product code** : 133-5223

**Other means of identification** : Not available.

**Product type** : Liquid.

**Relevant identified uses of the substance or mixture and uses advised against**

Paint or paint related material.

**Manufacturer** : THE SHERWIN-WILLIAMS COMPANY  
101 W. Prospect Avenue  
Cleveland, OH 44115

**Emergency telephone number of the company** : US / Canada: (216) 566-2917  
Mexico: SETIQ 01-800-00-214-00 / (52) 55-5559-1588 24 hours / 365 days a year

**Product Information Telephone Number** : US / Canada: Not Available  
Mexico: Not Available

**Regulatory Information Telephone Number** : US / Canada: (216) 566-2902  
Mexico: Not Available

**Transportation Emergency Telephone Number** : US / Canada: (800) 424-9300  
Mexico: SETIQ 01-800-00-214-00 / (52) 55-5559-1588 24 hours / 365 days a year

## Section 2. Hazards identification

**OSHA/HCS status** : This material is considered hazardous by the OSHA Hazard Communication Standard (29 CFR 1910.1200).

**Classification of the substance or mixture** : SKIN CORROSION/IRRITATION - Category 2  
SERIOUS EYE DAMAGE/ EYE IRRITATION - Category 2A  
CARCINOGENICITY - Category 1A  
SPECIFIC TARGET ORGAN TOXICITY (SINGLE EXPOSURE) (Respiratory tract irritation) - Category 3  
SPECIFIC TARGET ORGAN TOXICITY (REPEATED EXPOSURE) - Category 2  
Percentage of the mixture consisting of ingredient(s) of unknown acute dermal toxicity: 1.8%  
Percentage of the mixture consisting of ingredient(s) of unknown acute inhalation toxicity: 1.8%

**GHS label elements**

**Hazard pictograms** :



**Signal word** : Danger

## Section 2. Hazards identification

**Hazard statements** : Causes serious eye irritation.  
Causes skin irritation.  
May cause cancer.  
May cause respiratory irritation.  
May cause damage to organs through prolonged or repeated exposure.

### Precautionary statements

**General** : Read label before use. Keep out of reach of children. If medical advice is needed, have product container or label at hand.

**Prevention** : Obtain special instructions before use. Do not handle until all safety precautions have been read and understood. Wear protective gloves. Wear eye or face protection. Wear protective clothing. Use only outdoors or in a well-ventilated area. Do not breathe vapor. Wash hands thoroughly after handling.

**Response** : Get medical attention if you feel unwell. IF exposed or concerned: Get medical attention. IF INHALED: Remove person to fresh air and keep comfortable for breathing. Call a POISON CENTER or physician if you feel unwell. IF ON SKIN: Wash with plenty of soap and water. Take off contaminated clothing and wash it before reuse. If skin irritation occurs: Get medical attention. IF IN EYES: Rinse cautiously with water for several minutes. Remove contact lenses, if present and easy to do. Continue rinsing. If eye irritation persists: Get medical attention.

**Storage** : Store locked up.

**Disposal** : Dispose of contents and container in accordance with all local, regional, national and international regulations.

**Supplemental label elements** WARNING: This product contains chemicals known to the State of California to cause cancer and birth defects or other reproductive harm. Adequate ventilation required when sanding or abrading the dried film. If Adequate ventilation cannot be provided wear an approved particulate respirator (NIOSH approved). Follow respirator manufacturer's directions for respirator use. DELAYED EFFECTS FROM LONG TERM OVEREXPOSURE. Abrading or sanding of the dry film may release Crystalline Silica which has been shown to cause lung damage and cancer under long term exposure. Please refer to the SDS for additional information. Keep out of reach of children. Do not transfer contents to other containers for storage.

**Hazards not otherwise classified** : None known.

## Section 3. Composition/information on ingredients

**Substance/mixture** : Mixture

**Other means of identification** : Not available.

### CAS number/other identifiers

Ingredient name	% by weight	CAS number
Calcium Carbonate	≥25 - ≤50	1317-65-3
Titanium Dioxide	≤3	13463-67-7
Ethylene Glycol	≤3	107-21-1
Light Aliphatic Hydrocarbon	<1	64742-47-8
Crystalline Silica, respirable powder	<1	14808-60-7

Any concentration shown as a range is to protect confidentiality or is due to batch variation.

**There are no additional ingredients present which, within the current knowledge of the supplier and in the concentrations applicable, are classified as hazardous to health and hence require reporting in this section.**

Occupational exposure limits, if available, are listed in Section 8.

## Section 4. First aid measures

### Description of necessary first aid measures

- Eye contact** : Immediately flush eyes with plenty of water, occasionally lifting the upper and lower eyelids. Check for and remove any contact lenses. Continue to rinse for at least 10 minutes. Get medical attention.
- Inhalation** : Remove victim to fresh air and keep at rest in a position comfortable for breathing. If it is suspected that fumes are still present, the rescuer should wear an appropriate mask or self-contained breathing apparatus. If not breathing, if breathing is irregular or if respiratory arrest occurs, provide artificial respiration or oxygen by trained personnel. It may be dangerous to the person providing aid to give mouth-to-mouth resuscitation. Get medical attention. If necessary, call a poison center or physician. If unconscious, place in recovery position and get medical attention immediately. Maintain an open airway. Loosen tight clothing such as a collar, tie, belt or waistband.
- Skin contact** : Flush contaminated skin with plenty of water. Remove contaminated clothing and shoes. Wash contaminated clothing thoroughly with water before removing it, or wear gloves. Continue to rinse for at least 10 minutes. Get medical attention. Wash clothing before reuse. Clean shoes thoroughly before reuse.
- Ingestion** : Wash out mouth with water. Remove dentures if any. Remove victim to fresh air and keep at rest in a position comfortable for breathing. If material has been swallowed and the exposed person is conscious, give small quantities of water to drink. Stop if the exposed person feels sick as vomiting may be dangerous. Do not induce vomiting unless directed to do so by medical personnel. If vomiting occurs, the head should be kept low so that vomit does not enter the lungs. Get medical attention. Never give anything by mouth to an unconscious person. If unconscious, place in recovery position and get medical attention immediately. Maintain an open airway. Loosen tight clothing such as a collar, tie, belt or waistband.

### Most important symptoms/effects, acute and delayed

#### Potential acute health effects

- Eye contact** : Causes serious eye irritation.
- Inhalation** : May cause respiratory irritation.
- Skin contact** : Causes skin irritation.
- Ingestion** : No known significant effects or critical hazards.

#### Over-exposure signs/symptoms

- Eye contact** : Adverse symptoms may include the following:  
pain or irritation  
watering  
redness
- Inhalation** : Adverse symptoms may include the following:  
respiratory tract irritation  
coughing
- Skin contact** : Adverse symptoms may include the following:  
irritation  
redness
- Ingestion** : No specific data.

### Indication of immediate medical attention and special treatment needed, if necessary

- Notes to physician** : Treat symptomatically. Contact poison treatment specialist immediately if large quantities have been ingested or inhaled.
- Specific treatments** : No specific treatment.

## Section 4. First aid measures

- Protection of first-aiders** : No action shall be taken involving any personal risk or without suitable training. If it is suspected that fumes are still present, the rescuer should wear an appropriate mask or self-contained breathing apparatus. It may be dangerous to the person providing aid to give mouth-to-mouth resuscitation. Wash contaminated clothing thoroughly with water before removing it, or wear gloves.

See toxicological information (Section 11)

## Section 5. Fire-fighting measures

### Extinguishing media

- Suitable extinguishing media** : Use an extinguishing agent suitable for the surrounding fire.

- Unsuitable extinguishing media** : None known.

- Specific hazards arising from the chemical** : In a fire or if heated, a pressure increase will occur and the container may burst.

- Hazardous thermal decomposition products** : Decomposition products may include the following materials:  
carbon dioxide  
carbon monoxide  
metal oxide/oxides

- Special protective actions for fire-fighters** : Promptly isolate the scene by removing all persons from the vicinity of the incident if there is a fire. No action shall be taken involving any personal risk or without suitable training.

- Special protective equipment for fire-fighters** : Fire-fighters should wear appropriate protective equipment and self-contained breathing apparatus (SCBA) with a full face-piece operated in positive pressure mode.

## Section 6. Accidental release measures

### Personal precautions, protective equipment and emergency procedures

- For non-emergency personnel** : No action shall be taken involving any personal risk or without suitable training. Evacuate surrounding areas. Keep unnecessary and unprotected personnel from entering. Do not touch or walk through spilled material. Avoid breathing vapor or mist. Provide adequate ventilation. Wear appropriate respirator when ventilation is inadequate. Put on appropriate personal protective equipment.

- For emergency responders** : If specialized clothing is required to deal with the spillage, take note of any information in Section 8 on suitable and unsuitable materials. See also the information in "For non-emergency personnel".

- Environmental precautions** : Avoid dispersal of spilled material and runoff and contact with soil, waterways, drains and sewers. Inform the relevant authorities if the product has caused environmental pollution (sewers, waterways, soil or air).

### Methods and materials for containment and cleaning up

- Small spill** : Stop leak if without risk. Move containers from spill area. Dilute with water and mop up if water-soluble. Alternatively, or if water-insoluble, absorb with an inert dry material and place in an appropriate waste disposal container. Dispose of via a licensed waste disposal contractor.

## Section 6. Accidental release measures

- Large spill** : Stop leak if without risk. Move containers from spill area. Approach release from upwind. Prevent entry into sewers, water courses, basements or confined areas. Wash spillages into an effluent treatment plant or proceed as follows. Contain and collect spillage with non-combustible, absorbent material e.g. sand, earth, vermiculite or diatomaceous earth and place in container for disposal according to local regulations (see Section 13). Dispose of via a licensed waste disposal contractor. Contaminated absorbent material may pose the same hazard as the spilled product. Note: see Section 1 for emergency contact information and Section 13 for waste disposal.

## Section 7. Handling and storage

### Precautions for safe handling

- Protective measures** : Put on appropriate personal protective equipment (see Section 8). Avoid exposure - obtain special instructions before use. Do not handle until all safety precautions have been read and understood. Do not get in eyes or on skin or clothing. Do not breathe vapor or mist. Do not ingest. Use only with adequate ventilation. Wear appropriate respirator when ventilation is inadequate. Keep in the original container or an approved alternative made from a compatible material, kept tightly closed when not in use. Empty containers retain product residue and can be hazardous. Do not reuse container.

- Advice on general occupational hygiene** : Eating, drinking and smoking should be prohibited in areas where this material is handled, stored and processed. Workers should wash hands and face before eating, drinking and smoking. Remove contaminated clothing and protective equipment before entering eating areas. See also Section 8 for additional information on hygiene measures.

- Conditions for safe storage, including any incompatibilities** : Store in accordance with local regulations. Store in original container protected from direct sunlight in a dry, cool and well-ventilated area, away from incompatible materials (see Section 10) and food and drink. Store locked up. Keep container tightly closed and sealed until ready for use. Containers that have been opened must be carefully resealed and kept upright to prevent leakage. Do not store in unlabeled containers. Use appropriate containment to avoid environmental contamination. See Section 10 for incompatible materials before handling or use.

## Section 8. Exposure controls/personal protection

### Control parameters

#### Occupational exposure limits (OSHA United States)

Ingredient name	CAS #	Exposure limits
Calcium Carbonate	1317-65-3	<b>OSHA PEL (United States, 5/2018).</b> TWA: 5 mg/m <sup>3</sup> 8 hours. Form: Respirable fraction TWA: 15 mg/m <sup>3</sup> 8 hours. Form: Total dust <b>NIOSH REL (United States, 10/2016).</b> TWA: 5 mg/m <sup>3</sup> 10 hours. Form: Respirable fraction TWA: 10 mg/m <sup>3</sup> 10 hours. Form: Total
Titanium Dioxide	13463-67-7	<b>ACGIH TLV (United States, 3/2018).</b> TWA: 10 mg/m <sup>3</sup> 8 hours. <b>OSHA PEL (United States, 5/2018).</b> TWA: 15 mg/m <sup>3</sup> 8 hours. Form: Total dust
Ethylene Glycol	107-21-1	<b>ACGIH TLV (United States, 3/2018).</b> STEL: 10 mg/m <sup>3</sup> 15 minutes. Form: Inhalable fraction. Aerosol only. STEL: 50 ppm 15 minutes. Form: Vapor fraction TWA: 25 ppm 8 hours. Form: Vapor fraction

## Section 8. Exposure controls/personal protection

Light Aliphatic Hydrocarbon	64742-47-8	<p><b>ACGIH TLV (United States, 3/2018).</b>  <b>Absorbed through skin.</b>  TWA: 200 mg/m<sup>3</sup>, (as total hydrocarbon vapor) 8 hours.</p>
Crystalline Silica, respirable powder	14808-60-7	<p><b>OSHA PEL Z3 (United States, 6/2016).</b>  TWA: 250 mppcf / (%SiO<sub>2</sub>+5) 8 hours. Form: Respirable  TWA: 10 mg/m<sup>3</sup> / (%SiO<sub>2</sub>+2) 8 hours. Form: Respirable  <b>OSHA PEL (United States, 5/2018).</b>  TWA: 50 µg/m<sup>3</sup> 8 hours. Form: Respirable dust  <b>ACGIH TLV (United States, 3/2018).</b>  TWA: 0.025 mg/m<sup>3</sup> 8 hours. Form: Respirable fraction  <b>NIOSH REL (United States, 10/2016).</b>  TWA: 0.05 mg/m<sup>3</sup> 10 hours. Form: respirable dust</p>

### Occupational exposure limits (Canada)

Ingredient name	CAS #	Exposure limits
Limestone	1317-65-3	<p><b>CA British Columbia Provincial (Canada, 7/2018).</b>  TWA: 3 mg/m<sup>3</sup> 8 hours. Form: Respirable dust  TWA: 10 mg/m<sup>3</sup> 8 hours. Form: Total dust  STEL: 20 mg/m<sup>3</sup> 15 minutes.  <b>CA Alberta Provincial (Canada, 6/2018).</b>  8 hrs OEL: 10 mg/m<sup>3</sup> 8 hours.  <b>CA Quebec Provincial (Canada, 1/2014).</b>  TWAEV: 10 mg/m<sup>3</sup> 8 hours. Form: Total dust.  <b>CA Saskatchewan Provincial (Canada, 7/2013).</b>  STEL: 20 mg/m<sup>3</sup> 15 minutes.  TWA: 10 mg/m<sup>3</sup> 8 hours.</p>
Titanium dioxide	13463-67-7	<p><b>CA British Columbia Provincial (Canada, 7/2018).</b>  TWA: 3 mg/m<sup>3</sup> 8 hours. Form: Respirable dust  TWA: 10 mg/m<sup>3</sup> 8 hours. Form: Total dust  <b>CA Quebec Provincial (Canada, 1/2014).</b>  TWAEV: 10 mg/m<sup>3</sup> 8 hours. Form: Total dust.  <b>CA Alberta Provincial (Canada, 6/2018).</b>  8 hrs OEL: 10 mg/m<sup>3</sup> 8 hours.  <b>CA Ontario Provincial (Canada, 1/2018).</b>  TWA: 10 mg/m<sup>3</sup> 8 hours.  <b>CA Saskatchewan Provincial (Canada, 7/2013).</b>  STEL: 20 mg/m<sup>3</sup> 15 minutes.  TWA: 10 mg/m<sup>3</sup> 8 hours.</p>
Ethylene glycol	107-21-1	<p><b>CA British Columbia Provincial (Canada, 7/2018).</b>  C: 100 mg/m<sup>3</sup> Form: Aerosol  TWA: 10 mg/m<sup>3</sup> 8 hours. Form: Particulate  STEL: 20 mg/m<sup>3</sup> 15 minutes. Form: Particulate</p>



## Section 8. Exposure controls/personal protection

Quartz	14808-60-7	<p>C: 50 ppm Form: Vapour  <b>CA Ontario Provincial (Canada, 1/2018).</b>  C: 100 mg/m<sup>3</sup> Form: Aerosol only.  <b>CA Saskatchewan Provincial (Canada, 7/2013).</b>  CEIL: 100 mg/m<sup>3</sup> Form: aerosol  <b>CA Alberta Provincial (Canada, 6/2018).</b>  C: 100 mg/m<sup>3</sup>  <b>CA Quebec Provincial (Canada, 1/2014).</b>  STEVE: 50 ppm 15 minutes. Form: vapour and mist  STEVE: 127 mg/m<sup>3</sup> 15 minutes. Form: vapour and mist</p> <p><b>CA British Columbia Provincial (Canada, 7/2018).</b>  TWA: 0.025 mg/m<sup>3</sup> 8 hours. Form: Respirable  <b>CA Quebec Provincial (Canada, 1/2014).</b>  TWAEEV: 0.1 mg/m<sup>3</sup> 8 hours. Form: Respirable dust.  <b>CA Ontario Provincial (Canada, 1/2018).</b>  TWA: 0.1 mg/m<sup>3</sup> 8 hours. Form: Respirable fraction.  <b>CA Alberta Provincial (Canada, 6/2018).</b>  8 hrs OEL: 0.025 mg/m<sup>3</sup> 8 hours. Form: Respirable particulate  <b>CA Saskatchewan Provincial (Canada, 7/2013).</b>  TWA: 0.05 mg/m<sup>3</sup> 8 hours. Form: respirable fraction</p>
--------	------------	--

### Occupational exposure limits (Mexico)

	CAS #	Exposure limits
ethanediol	107-21-1	<b>NOM-010-STPS-2014 (Mexico, 4/2016).</b> CEIL: 100 mg/m <sup>3</sup> Form: Only AEROSOL

**Appropriate engineering controls** : Use only with adequate ventilation. If user operations generate dust, fumes, gas, vapor or mist, use process enclosures, local exhaust ventilation or other engineering controls to keep worker exposure to airborne contaminants below any recommended or statutory limits.

**Environmental exposure controls** : Emissions from ventilation or work process equipment should be checked to ensure they comply with the requirements of environmental protection legislation. In some cases, fume scrubbers, filters or engineering modifications to the process equipment will be necessary to reduce emissions to acceptable levels.

### Individual protection measures

**Hygiene measures** : Wash hands, forearms and face thoroughly after handling chemical products, before eating, smoking and using the lavatory and at the end of the working period. Appropriate techniques should be used to remove potentially contaminated clothing. Wash contaminated clothing before reusing. Ensure that eyewash stations and safety showers are close to the workstation location.

**Eye/face protection** : Safety eyewear complying with an approved standard should be used when a risk assessment indicates this is necessary to avoid exposure to liquid splashes, mists, gases or dusts. If contact is possible, the following protection should be worn, unless the assessment indicates a higher degree of protection: chemical splash goggles.

### Skin protection



## Section 8. Exposure controls/personal protection

- Hand protection** : Chemical-resistant, impervious gloves complying with an approved standard should be worn at all times when handling chemical products if a risk assessment indicates this is necessary. Considering the parameters specified by the glove manufacturer, check during use that the gloves are still retaining their protective properties. It should be noted that the time to breakthrough for any glove material may be different for different glove manufacturers. In the case of mixtures, consisting of several substances, the protection time of the gloves cannot be accurately estimated.
- Body protection** : Personal protective equipment for the body should be selected based on the task being performed and the risks involved and should be approved by a specialist before handling this product.
- Other skin protection** : Appropriate footwear and any additional skin protection measures should be selected based on the task being performed and the risks involved and should be approved by a specialist before handling this product.
- Respiratory protection** : Based on the hazard and potential for exposure, select a respirator that meets the appropriate standard or certification. Respirators must be used according to a respiratory protection program to ensure proper fitting, training, and other important aspects of use.

## Section 9. Physical and chemical properties

### Appearance

- Physical state** : Liquid.
- Color** : Not available.
- Odor** : Not available.
- Odor threshold** : Not available.
- pH** : 8.3
- Melting point/freezing point** : Not available.
- Boiling point/boiling range** : 100°C (212°F)
- Flash point** : Closed cup: >94°C (>201.2°F)
- Evaporation rate** : 0.09 (butyl acetate = 1)
- Flammability (solid, gas)** : Not available.
- Lower and upper explosive (flammable) limits** : Lower: 3.2%  
Upper: 15.3%
- Vapor pressure** : 2.3 kPa (17.5 mm Hg) [at 20°C]
- Vapor density** : 1 [Air = 1]
- Relative density** : 1.41
- Solubility** : Not available.
- Partition coefficient: n-octanol/water** : Not available.
- Auto-ignition temperature** : Not available.
- Decomposition temperature** : Not available.
- Viscosity** : Kinematic (40°C (104°F)): >0.205 cm<sup>2</sup>/s (>20.5 cSt)
- Molecular weight** : Not applicable.
- Aerosol product**
- Heat of combustion** : 4.154 kJ/g

## Section 10. Stability and reactivity

- Reactivity** : No specific test data related to reactivity available for this product or its ingredients.
- Chemical stability** : The product is stable.
- Possibility of hazardous reactions** : Under normal conditions of storage and use, hazardous reactions will not occur.
- Conditions to avoid** : No specific data.
- Incompatible materials** : No specific data.
- Hazardous decomposition products** : Under normal conditions of storage and use, hazardous decomposition products should not be produced.

## Section 11. Toxicological information

### Information on toxicological effects

#### Acute toxicity

Product/ingredient name	Result	Species	Dose	Exposure
Ethylene Glycol	LD50 Oral	Rat	4700 mg/kg	-

#### Irritation/Corrosion

Product/ingredient name	Result	Species	Score	Exposure	Observation
Titanium Dioxide	Skin - Mild irritant	Human	-	72 hours 300 Micrograms Intermittent	-
Ethylene Glycol	Eyes - Mild irritant	Rabbit	-	24 hours 500 milligrams	-
	Eyes - Mild irritant	Rabbit	-	1 hours 100 milligrams	-
	Eyes - Moderate irritant	Rabbit	-	6 hours 1440 milligrams	-
	Skin - Mild irritant	Rabbit	-	555 milligrams	-

#### Sensitization

Not available.

#### Mutagenicity

Not available.

#### Carcinogenicity

Not available.

#### Classification

Product/ingredient name	OSHA	IARC	NTP
Titanium Dioxide	-	2B	-
Crystalline Silica, respirable powder	-	1	Known to be a human carcinogen.

#### Reproductive toxicity

Not available.

#### Teratogenicity

## Section 11. Toxicological information

Not available.

### Specific target organ toxicity (single exposure)

Name	Category	Route of exposure	Target organs
Calcium Carbonate	Category 3	Not applicable.	Respiratory tract irritation
Ethylene Glycol	Category 3	Not applicable.	Narcotic effects
	Category 3	Not applicable.	Respiratory tract irritation
Light Aliphatic Hydrocarbon	Category 3	Not applicable.	Narcotic effects
	Category 3	Not applicable.	Respiratory tract irritation

### Specific target organ toxicity (repeated exposure)

Name	Category	Route of exposure	Target organs
Ethylene Glycol	Category 2	Not determined	Not determined
Light Aliphatic Hydrocarbon	Category 2	Not determined	Not determined
Crystalline Silica, respirable powder	Category 1	Inhalation	Not determined

### Aspiration hazard

Name	Result
Light Aliphatic Hydrocarbon	ASPIRATION HAZARD - Category 1

**Information on the likely routes of exposure** : Not available.

### Potential acute health effects

- Eye contact** : Causes serious eye irritation.
- Inhalation** : May cause respiratory irritation.
- Skin contact** : Causes skin irritation.
- Ingestion** : No known significant effects or critical hazards.

### Symptoms related to the physical, chemical and toxicological characteristics

- Eye contact** : Adverse symptoms may include the following:  
pain or irritation  
watering  
redness
- Inhalation** : Adverse symptoms may include the following:  
respiratory tract irritation  
coughing
- Skin contact** : Adverse symptoms may include the following:  
irritation  
redness
- Ingestion** : No specific data.

### Delayed and immediate effects and also chronic effects from short and long term exposure

#### Short term exposure

- Potential immediate effects** : Not available.
- Potential delayed effects** : Not available.

## Section 11. Toxicological information

### Long term exposure

**Potential immediate effects** : Not available.

**Potential delayed effects** : Not available.

### Potential chronic health effects

Not available.

**General** : May cause damage to organs through prolonged or repeated exposure.  
**Carcinogenicity** : May cause cancer. Risk of cancer depends on duration and level of exposure.  
**Mutagenicity** : No known significant effects or critical hazards.  
**Teratogenicity** : No known significant effects or critical hazards.  
**Developmental effects** : No known significant effects or critical hazards.  
**Fertility effects** : No known significant effects or critical hazards.

### Numerical measures of toxicity

#### Acute toxicity estimates

Route	ATE value
Oral	27420.73 mg/kg

## Section 12. Ecological information

### Toxicity

Product/ingredient name	Result	Species	Exposure
Titanium Dioxide Ethylene Glycol	Acute LC50 >1000000 µg/l Marine water	Fish - Fundulus heteroclitus	96 hours
	Acute LC50 6900000 µg/l Fresh water	Crustaceans - Ceriodaphnia dubia - Neonate	48 hours
Light Aliphatic Hydrocarbon	Acute LC50 41000000 µg/l Fresh water	Daphnia - Daphnia magna - Neonate	48 hours
	Acute LC50 8050000 µg/l Fresh water	Fish - Pimephales promelas	96 hours
	Acute LC50 2200 µg/l Fresh water	Fish - Lepomis macrochirus	4 days

### Persistence and degradability

Product/ingredient name	Aquatic half-life	Photolysis	Biodegradability
Ethylene Glycol	-	-	Readily

### Bioaccumulative potential

Not available.

### Mobility in soil



**Soil/water partition coefficient (K<sub>oc</sub>)** : Not available.

**Other adverse effects** : No known significant effects or critical hazards.

## Section 13. Disposal considerations

**Disposal methods** : The generation of waste should be avoided or minimized wherever possible. Disposal of this product, solutions and any by-products should at all times comply with the requirements of environmental protection and waste disposal legislation and any regional local authority requirements. Dispose of surplus and non-recyclable products via a licensed waste disposal contractor. Waste should not be disposed of untreated to the sewer unless fully compliant with the requirements of all authorities with jurisdiction. Waste packaging should be recycled. Incineration or landfill should only be considered when recycling is not feasible. This material and its container must be disposed of in a safe way. Care should be taken when handling emptied containers that have not been cleaned or rinsed out. Empty containers or liners may retain some product residues. Avoid dispersal of spilled material and runoff and contact with soil, waterways, drains and sewers.

## Section 14. Transport information

	<b>DOT Classification</b>	<b>TDG Classification</b>	<b>Mexico Classification</b>	<b>IATA</b>	<b>IMDG</b>
<b>UN number</b>	Not regulated.	Not regulated.	Not regulated.	Not regulated.	UN3082
<b>UN proper shipping name</b>	-	-	-	-	ENVIRONMENTALLY HAZARDOUS SUBSTANCE, LIQUID, N.O.S. (Dialkyl (C9-C11) Phthalates). Marine pollutant (Dialkyl (C9-C11) Phthalates)
<b>Transport hazard class(es)</b>	-	-	-	-	9  
<b>Packing group</b>	-	-	-	-	III
<b>Environmental hazards</b>	No.	No.	No.	No.	Yes.
<b>Additional information</b>	-	-	-	The environmentally hazardous substance mark may appear if required by other transportation regulations.	This product is not regulated as a dangerous good when transported in sizes of ≤5 L or ≤5 kg, provided the packagings meet the general provisions of 4.1.1.1, 4.1.1.2 and 4.1.1.4 to 4.1.1.8. <b>Emergency schedules</b> F-A, S-F

## Section 14. Transport information

**Special precautions for user** : Multi-modal shipping descriptions are provided for informational purposes and do not consider container sizes. The presence of a shipping description for a particular mode of transport (sea, air, etc.), does not indicate that the product is packaged suitably for that mode of transport. All packaging must be reviewed for suitability prior to shipment, and compliance with the applicable regulations is the sole responsibility of the person offering the product for transport. People loading and unloading dangerous goods must be trained on all of the risks deriving from the substances and on all actions in case of emergency situations.

**Transport in bulk according to Annex II of MARPOL and the IBC Code** : Not available.

**Proper shipping name** : Not available.

**Ship type** : Not available.

**Pollution category** : Not available.

## Section 15. Regulatory information

**TSCA 5(a)2 proposed significant new use rules:** 1-Methyl-2-Pyrrolidone

### SARA 313

SARA 313 (40 CFR 372.45) supplier notification can be found on the Environmental Data Sheet.

### California Prop. 65

WARNING: This product contains chemicals known to the State of California to cause cancer and birth defects or other reproductive harm.

### International regulations

#### **International lists**

**Australia inventory (AICS):** Not determined.  
**China inventory (IECSC):** Not determined.  
**Japan inventory (ENCS):** Not determined.  
**Japan inventory (ISHL):** Not determined.  
**Korea inventory (KECI):** Not determined.  
**New Zealand Inventory of Chemicals (NZIoC):** Not determined.  
**Philippines inventory (PICCS):** Not determined.  
**Taiwan Chemical Substances Inventory (TCSI):** Not determined.  
**Thailand inventory:** Not determined.  
**Turkey inventory:** Not determined.  
**Vietnam inventory:** Not determined.

## Section 16. Other information

### Hazardous Material Information System (U.S.A.)

Health	*	2
Flammability		0
Physical hazards		0

The customer is responsible for determining the PPE code for this material. For more information on HMIS® Personal Protective Equipment (PPE) codes, consult the HMIS® Implementation Manual.

Caution: HMIS® ratings are based on a 0-4 rating scale, with 0 representing minimal hazards or risks, and 4 representing significant hazards or risks. Although HMIS® ratings and the associated label are not required on SDSs or products leaving a facility under 29 CFR 1910.1200, the preparer may choose to provide them. HMIS® ratings are to be used with a fully implemented HMIS® program. HMIS® is a registered trademark and service mark of the American Coatings Association, Inc.

### Procedure used to derive the classification

## Section 16. Other information

Classification	Justification
SKIN CORROSION/IRRITATION - Category 2	Calculation method
SERIOUS EYE DAMAGE/ EYE IRRITATION - Category 2A	Calculation method
CARCINOGENICITY - Category 1A	Calculation method
SPECIFIC TARGET ORGAN TOXICITY (SINGLE EXPOSURE) (Respiratory tract irritation) - Category 3	Calculation method
SPECIFIC TARGET ORGAN TOXICITY (REPEATED EXPOSURE) - Category 2	Calculation method

### History

**Date of printing** : 7/24/2019

**Date of issue/Date of revision** : 7/24/2019

**Date of previous issue** : 4/22/2019

**Version** : 11

**Key to abbreviations** : ATE = Acute Toxicity Estimate  
BCF = Bioconcentration Factor  
GHS = Globally Harmonized System of Classification and Labelling of Chemicals  
IATA = International Air Transport Association  
IBC = Intermediate Bulk Container  
IMDG = International Maritime Dangerous Goods  
LogPow = logarithm of the octanol/water partition coefficient  
MARPOL = International Convention for the Prevention of Pollution From Ships, 1973 as modified by the Protocol of 1978. ("Marpol" = marine pollution)  
N/A = Not available  
SGG = Segregation Group  
UN = United Nations

▣ Indicates information that has changed from previously issued version.

### Notice to reader

It is recommended that each customer or recipient of this Safety Data Sheet (SDS) study it carefully and consult resources, as necessary or appropriate, to become aware of and understand the data contained in this SDS and any hazards associated with the product. This information is provided in good faith and believed to be accurate as of the effective date herein. However, no warranty, express or implied, is given. The information presented here applies only to the product as shipped. The addition of any material can change the composition, hazards and risks of the product. Products shall not be repackaged, modified, or tinted except as specifically instructed by the manufacturer, including but not limited to the incorporation of products not specified by the manufacturer, or the use or addition of products in proportions not specified by the manufacturer. Regulatory requirements are subject to change and may differ between various locations and jurisdictions. The customer/buyer/user is responsible to ensure that his activities comply with all country, federal, state, provincial or local laws. The conditions for use of the product are not under the control of the manufacturer; the customer/buyer/user is responsible to determine the conditions necessary for the safe use of this product. The customer/buyer/user should not use the product for any purpose other than the purpose shown in the applicable section of this SDS without first referring to the supplier and obtaining written handling instructions. Due to the proliferation of sources for information such as manufacturer-specific SDS, the manufacturer cannot be responsible for SDSs obtained from any other source.

**APPENDIX D – SHERWIN-WILLIAMS SPOT PRIME AND FINISH PAINT MATERIAL  
SHEET**



# Loxon® XP

## Waterproofing Masonry Coating Flat

LX11-50 Series


**SHERWIN  
WILLIAMS®**

### CHARACTERISTICS

**Loxon XP** is an exterior, high build coating that provides excellent flexibility, durability and weather resistance. This product will protect against wind-driven rain when used on concrete, CMU, stucco and shotcrete/gunite. It is highly alkali and efflorescence resistant. This may be applied to a surface with a pH of 6 to 13.

Apply directly to fresh concrete (at least 7 days old)

Shotcrete/gunite surfaces may be painted after 3 days

Can be applied over high pH (up to 13) substrates, no primer required

Can be applied down to 35°F

**Color:** Most Colors

**1 coat system, brush, roller, or spray applied, coverage per coat:**

Wet mils: 14-18

Dry mils: 6.5-8.4

Coverage sq.ft. per gallon 90-115

Can be applied up to 40 mils wet.

Coverage will vary with the substrate and the texture. Coverage on porous & rough stucco 80 square feet per gallon

**Drying Schedule @ 50% RH: temperature and humidity dependent**

**@35-45°F @ 45°F+**

**Touch:** 6 hrs 4 hrs

**Recoat:** 24-48 hrs 24 hrs

Drying time is temperature, humidity, and film thickness dependent.

**Finish:** 0-10 units @ 85°

**Tinting with CCE only:**

**Base** oz/gal

**Extra White** 0-6 SherColor

**Deep Base** 4-12 SherColor

**Ultradeep** 10-12 SherColor

**Light Yellow** 0-12 SherColor

**Extra White LX11W0051**

(may vary by color)

**V.O.C. (less exempt solvents):**

less than 50 grams per litre; 0.42 lbs. per gallon

As per 40 CFR 59.406

**Volume Solids:** 47 ± 2%

**Weight Solids:** 61 ± 2%

**Weight per Gallon:** 11.47 lb

**Flash Point:** NA

**Vehicle Type:** Proprietary Acrylic

**Shelf Life:** 36 months, unopened

**Mildew Resistant:**

This coating contains agents which inhibit the growth of mildew on the surface of this coating film. Passes ASTM D3273/D3274

### COMPLIANCE

As of 07/09/2019, Complies with:

<b>OTC</b>	Yes
<b>OTC Phase II</b>	Yes
<b>SCAQMD</b>	Yes
<b>CARB</b>	Yes
<b>CARB SCM 2007</b>	Yes
<b>Canada</b>	Yes
<b>LEED® v4 &amp; v4.1 Emissions</b>	N/A
<b>LEED® v4 &amp; v4.1 V.O.C.</b>	Yes
<b>EPD-NSF® Certified</b>	N/A
<b>MIR-Product Lens Certified</b>	N/A
<b>MPI</b>	Yes

### APPLICATION

**Temperature:**

minimum 35°F

The following is a guide. Changes in pressures and tip sizes may be needed for proper spray characteristics. Always purge spray equipment before use with listed reducer. Any reduction must be compatible with the existing environmental and application conditions.

**Reducer:** Do not reduce

**Airless Spray:**

Pressure

2300 p.s.i.

Tip

.021 inch

Brush

Use a nylon/  
polyester brush

Roller Cover

Use a ½ to 1½ inch  
nap synthetic roller  
cover.

The substrate and its condition will determine the application procedure. Considerations to minimize pinholes:

- 2 coat application with overnight drying between coats
- Spray application with backrolling
- Power rolling

Spray and backroll on porous & rough stucco to achieve required film build and a pin-hole free surface.

When the air temperature is at 35°F, substrates may be colder; prior to painting, check to be sure the air, surface, and material temperature are above 35°F and at least 5°F above the dew point. Avoid using if rain or snow is expected within 2-3 hours.

Do not apply at air or surface temperatures below 35°F or when air or surface temperatures may drop below 35°F within 48 hours.

Do not reduce.

### APPLICATION TIPS

For proper waterproofing performance and to resist alkalis, 2 coats of the coating **MUST** be applied between 14.0 -18.0 mils wet per coat.

A total dry film thickness of 13 - 16.8 mils of topcoat and a surface with 10 or less pinholes per square foot is required for a waterproofing system

For extremely porous block a coat of Loxon Block Surfacer may be required to achieve a pinhole free surface.

For rehabilitating existing concrete water tanks, additional products may be used.

### RECOMMENDED SYSTEMS

**Concrete, Stucco, Concrete Block, CMU, Split-face Block, and other Cementitious surfaces**

1 ct. Loxon Acrylic Block Surfacer  
(if needed) or

Loxon Conditioner (if needed)

1-2 cts. Loxon XP

**Previously Coated in good condition:**

After power washing, apply 1 coat of Loxon XP over the surface.

**Incidental Wood:**

1 ct. Exterior Latex Wood Primer

1-2 cts. Loxon XP

**Incidental Metal:**

(steel, galvanized, or aluminum):

1 ct. Pro Industrial Pro-Cryl Primer

1-2 cts. Loxon XP

**Waterproofing System:**

- Two coats of topcoat
- 6.5 to 8.4 mils dft per coat
- 13 to 16.8 mils total dry film thickness
- 10 or less pinholes per square foot

# Loxon® XP

## Waterproofing Masonry Coatin -Flat

### SURFACE PREPARATION

**WARNING!** Removal of old paint by sanding, scraping or other means may generate dust or fumes that contain lead. Exposure to lead dust or fumes may cause brain damage or other adverse health effects, especially in children or pregnant women. Controlling exposure to lead or other hazardous substances requires the use of proper protective equipment, such as a properly fitted respirator (NIOSH approved) and proper containment and cleanup. For more information, call the National Lead Information Center at **1-800-424-LEAD** (in US) or contact your local health authority.

Remove all surface contamination by washing with an appropriate cleaner, rinse thoroughly and allow to dry. Scrape and sand peeled or checked paint to a sound surface. Sand glossy surfaces dull. Seal stains from water, smoke, ink, pencil, grease, etc. with the appropriate primer/sealer. Recognize that any surface preparation short of total removal of the old coating may compromise the service length of the system.

#### **Concrete, CMU, Stucco:**

On tilt-up and poured-in-place concrete, commercial detergents and sandblasting may be necessary to remove sealers, release compounds, and to provide an anchor pattern. Concrete and mortar must be cured at least 7 days at 75°F. Fill bugholes, air pockets, cracks, and other voids with an elastomeric patch or sealant. Rough surfaces can be filled to provide a smooth surface.

#### **Incidental Metal:**

Wash to remove any oil, grease, or other surface contamination. All corrosion must be removed with sandpaper, wire brush, or other abrading method. Primer required.

#### **Incidental Wood:**

Sand any exposed wood to a fresh surface. Patch all holes and imperfections with a wood filler or putty and sand smooth. All patched areas must be primed. Primer required.

Sealing and Patching—After cleaning the surface thoroughly, prime the concrete surface with Loxon XP, apply an elastomeric patch or sealant if needed, allow to dry, then topcoat.

To improve the performance consider:

- Use caution when preparing the substrate to create a uniform surface.
- Cracks, crevices, and through-wall openings must be patched with an elastomeric patch or sealant.
- Fill voids and openings around window and doors with an elastomeric patch or sealant.
- Stripe coat all inside and outside corners and edges with 1 coat of Loxon XP coating.

### SURFACE PREPARATION

#### **Mildew:**

Prior to attempting to remove mildew, it is always recommended to test any cleaner on a small, inconspicuous area prior to use. Bleach and bleaching type cleaners may damage or discolor existing paint films. Bleach alternative cleaning solutions may be advised.

Mildew may be removed before painting by washing with a solution of 1 part liquid bleach and 3 parts water. Apply the solution and scrub the mildewed area. Allow the solution to remain on the surface for 10 minutes. Rinse thoroughly with water and allow the surface to dry before painting. Wear protective eyewear, waterproof gloves, and protective clothing. Quickly wash off any of the mixture that comes in contact with your skin. Do not add detergents or ammonia to the bleach/water solution.

### PHYSICAL PROPERTIES

Do not paint on wet surfaces.

#### **LX11W0051**

#### **Wind-Driven Rain Test : Pass**

Method: ASTM D6904-03  
2cts Loxon XP @ 6.4-8.3 mils dft/ct

#### **Water Vapor Permeance : 17.96 perms**

Method: ASTM D1653 14 day cure @ 77°F & 50% RH  
2cts Loxon XP @ 6.5 mils dft/ct

#### **Elongation : 275%**

Method: ASTM D2370, 14 day cure @ 77°F & 50% RH  
1ct Loxon XP @ 9.4 mils dft

#### **Tensile Strength : 285 psi**

Method: ASTM D2370, 14 day cure @ 77°F & 50% RH  
1ct Loxon XP @ 9.4 mils dft

#### **Flexibility:**

Method: ASTM D522  
Result: Pass

#### **Alkali Resistance:**

Method: ASTM D1308  
Result: Pass

#### **Chloride Ion Permeability:**

Result: 243 coulombs  
Result: "Very Low" Permeability Class

#### **CO<sub>2</sub> Diffusion (anti-carbonation):**

Method: ASTM F2476  
Result: 344 meters  
equivalent air thickness >50 meters to pass  
8.0 g/m<sup>2</sup>/24 hrs

#### **Crack Bridging: Class A5**

Method: EN 1062-7 Method A  
Result: up to 2.5 mm @ -10°C

### CAUTIONS

For exterior use only.

Protect from freezing.

Non-photochemically reactive.

Not for use on horizontal surfaces (floors, roofs, decks, etc.) where water will collect.

Not for use below grade. Will not withstand hydrostatic pressure.

Before using, carefully read CAUTIONS on label.

**ZINC.** Use only with adequate ventilation. To avoid overexposure, open windows and doors or use other means to ensure fresh air entry during application and drying. If you experience eye watering, headaches, or dizziness, increase fresh air, or wear respiratory protection (NIOSH approved) or leave the area. Avoid contact with eyes and skin. Wash hands after using. Keep container closed when not in use. Do not transfer contents to other containers for storage. **FIRST AID:** In case of eye contact, flush thoroughly with large amounts of water. Get medical attention if irritation persists. If swallowed, call Poison Control Center, hospital emergency room, or physician immediately. **WARNING:** This product contains chemicals known to the State of California to cause cancer and birth defects or other reproductive harm. **DO NOT TAKE INTERNALLY. KEEP OUT OF THE REACH OF CHILDREN.**

HOTW 07/09/2019 LX11W0051 23 00  
FRC, SP

### CLEANUP INFORMATION

Clean spills, spatters, hands and tools immediately after use with soap and warm water. After cleaning, flush spray equipment with a compliant cleanup solvent to prevent rusting of the equipment. Follow manufacturer's safety recommendations when using solvents.

# SAFETY DATA SHEET

LX11W51

## Section 1. Identification

**Product name** : LOXON XP™ Waterproofing Masonry Coating  
Extra White

**Product code** : LX11W51

**Other means of identification** : Not available.

**Product type** : Liquid.

**Relevant identified uses of the substance or mixture and uses advised against**  
Paint or paint related material.

**Manufacturer** : THE SHERWIN-WILLIAMS COMPANY  
101 W. Prospect Avenue  
Cleveland, OH 44115

**Emergency telephone number of the company** : US / Canada: (216) 566-2917  
Mexico: SETIQ 01-800-00-214-00 / (52) 55-5559-1588 24 hours / 365 days a year

**Product Information Telephone Number** : US / Canada: Not Available  
Mexico: Not Available

**Regulatory Information Telephone Number** : US / Canada: (216) 566-2902  
Mexico: Not Available

**Transportation Emergency Telephone Number** : US / Canada: (800) 424-9300  
Mexico: SETIQ 01-800-00-214-00 / (52) 55-5559-1588 24 hours / 365 days a year

## Section 2. Hazards identification

**OSHA/HCS status** : This material is considered hazardous by the OSHA Hazard Communication Standard (29 CFR 1910.1200).

**Classification of the substance or mixture** : CARCINOGENICITY - Category 2

Percentage of the mixture consisting of ingredient(s) of unknown acute oral toxicity:  
2.2%

Percentage of the mixture consisting of ingredient(s) of unknown acute dermal toxicity:  
2.2%

Percentage of the mixture consisting of ingredient(s) of unknown acute inhalation toxicity: 2.2%

### GHS label elements

**Hazard pictograms** :



**Signal word** : Warning

**Hazard statements** : Suspected of causing cancer.

### Precautionary statements

## Section 2. Hazards identification

- General** : Read label before use. Keep out of reach of children. If medical advice is needed, have product container or label at hand.
- Prevention** : Obtain special instructions before use. Do not handle until all safety precautions have been read and understood. Wear protective gloves. Wear eye or face protection. Wear protective clothing.
- Response** : IF exposed or concerned: Get medical attention.
- Storage** : Store locked up.
- Disposal** : Dispose of contents and container in accordance with all local, regional, national and international regulations.
- Supplemental label elements** : WARNING: This product contains chemicals known to the State of California to cause cancer and birth defects or other reproductive harm.
- This product contains a Significant New Use Rule (SNUR) Chemical. Do not allow this product to enter drains, sewers, wastewater treatment systems, groundwater, streams, lakes or ponds. See Environmental Data Sheet (EDS) for additional details.
- Please refer to the SDS for additional information. Keep out of reach of children. Do not transfer contents to other containers for storage.
- Hazards not otherwise classified** : None known.

## Section 3. Composition/information on ingredients

- Substance/mixture** : Mixture
- Other means of identification** : Not available.
- CAS number/other identifiers**

Ingredient name	% by weight	CAS number
Titanium Dioxide	≥10 - ≤25	13463-67-7
Zinc Oxide	≤3	1314-13-2

Any concentration shown as a range is to protect confidentiality or is due to batch variation.

**There are no additional ingredients present which, within the current knowledge of the supplier and in the concentrations applicable, are classified as hazardous to health and hence require reporting in this section.**

Occupational exposure limits, if available, are listed in Section 8.

## Section 4. First aid measures

### Description of necessary first aid measures

- Eye contact** : Immediately flush eyes with plenty of water, occasionally lifting the upper and lower eyelids. Check for and remove any contact lenses. Continue to rinse for at least 10 minutes. Get medical attention.
- Inhalation** : Remove victim to fresh air and keep at rest in a position comfortable for breathing. If not breathing, if breathing is irregular or if respiratory arrest occurs, provide artificial respiration or oxygen by trained personnel. It may be dangerous to the person providing aid to give mouth-to-mouth resuscitation. Get medical attention. If unconscious, place in recovery position and get medical attention immediately. Maintain an open airway. Loosen tight clothing such as a collar, tie, belt or waistband.
- Skin contact** : Flush contaminated skin with plenty of water. Remove contaminated clothing and shoes. Continue to rinse for at least 10 minutes. Get medical attention. Wash clothing before reuse. Clean shoes thoroughly before reuse.

## Section 4. First aid measures

- Ingestion** : Wash out mouth with water. Remove dentures if any. Remove victim to fresh air and keep at rest in a position comfortable for breathing. If material has been swallowed and the exposed person is conscious, give small quantities of water to drink. Stop if the exposed person feels sick as vomiting may be dangerous. Do not induce vomiting unless directed to do so by medical personnel. If vomiting occurs, the head should be kept low so that vomit does not enter the lungs. Get medical attention. Never give anything by mouth to an unconscious person. If unconscious, place in recovery position and get medical attention immediately. Maintain an open airway. Loosen tight clothing such as a collar, tie, belt or waistband.

### Most important symptoms/effects, acute and delayed

#### Potential acute health effects

- Eye contact** : No known significant effects or critical hazards.  
**Inhalation** : No known significant effects or critical hazards.  
**Skin contact** : No known significant effects or critical hazards.  
**Ingestion** : No known significant effects or critical hazards.

#### Over-exposure signs/symptoms

- Eye contact** : No specific data.  
**Inhalation** : No specific data.  
**Skin contact** : No specific data.  
**Ingestion** : No specific data.

### Indication of immediate medical attention and special treatment needed, if necessary

- Notes to physician** : Treat symptomatically. Contact poison treatment specialist immediately if large quantities have been ingested or inhaled.  
**Specific treatments** : No specific treatment.  
**Protection of first-aiders** : No action shall be taken involving any personal risk or without suitable training. It may be dangerous to the person providing aid to give mouth-to-mouth resuscitation.

See toxicological information (Section 11)

## Section 5. Fire-fighting measures

### Extinguishing media

- Suitable extinguishing media** : Use an extinguishing agent suitable for the surrounding fire.  
**Unsuitable extinguishing media** : None known.

**Specific hazards arising from the chemical** : In a fire or if heated, a pressure increase will occur and the container may burst.

- Hazardous thermal decomposition products** : Decomposition products may include the following materials:  
metal oxide/oxides

**Special protective actions for fire-fighters** : Promptly isolate the scene by removing all persons from the vicinity of the incident if there is a fire. No action shall be taken involving any personal risk or without suitable training.

**Special protective equipment for fire-fighters** : Fire-fighters should wear appropriate protective equipment and self-contained breathing apparatus (SCBA) with a full face-piece operated in positive pressure mode.

## Section 6. Accidental release measures

### Personal precautions, protective equipment and emergency procedures

- For non-emergency personnel** : No action shall be taken involving any personal risk or without suitable training. Evacuate surrounding areas. Keep unnecessary and unprotected personnel from entering. Do not touch or walk through spilled material. Avoid breathing vapor or mist. Provide adequate ventilation. Wear appropriate respirator when ventilation is inadequate. Put on appropriate personal protective equipment.
- For emergency responders** : If specialized clothing is required to deal with the spillage, take note of any information in Section 8 on suitable and unsuitable materials. See also the information in "For non-emergency personnel".

**Environmental precautions** : **This product contains a Significant New Use Rule (SNUR) Chemical. Do not allow this product to enter drains, sewers, wastewater treatment systems, groundwater, streams, lakes or ponds. See Environmental Data Sheet (EDS) for additional details.**

Avoid dispersal of spilled material and runoff and contact with soil, waterways, drains and sewers. Inform the relevant authorities if the product has caused environmental pollution (sewers, waterways, soil or air).

### Methods and materials for containment and cleaning up

- Small spill** : Stop leak if without risk. Move containers from spill area. Dilute with water and mop up if water-soluble. Alternatively, or if water-insoluble, absorb with an inert dry material and place in an appropriate waste disposal container. Dispose of via a licensed waste disposal contractor.
- Large spill** : Stop leak if without risk. Move containers from spill area. Approach release from upwind. Prevent entry into sewers, water courses, basements or confined areas. Wash spillages into an effluent treatment plant or proceed as follows. Contain and collect spillage with non-combustible, absorbent material e.g. sand, earth, vermiculite or diatomaceous earth and place in container for disposal according to local regulations (see Section 13). Dispose of via a licensed waste disposal contractor. Contaminated absorbent material may pose the same hazard as the spilled product. Note: see Section 1 for emergency contact information and Section 13 for waste disposal.

## Section 7. Handling and storage

### Precautions for safe handling

- Protective measures** : Put on appropriate personal protective equipment (see Section 8). Avoid exposure - obtain special instructions before use. Do not handle until all safety precautions have been read and understood. Do not get in eyes or on skin or clothing. Do not ingest. Avoid breathing vapor or mist. If during normal use the material presents a respiratory hazard, use only with adequate ventilation or wear appropriate respirator. Keep in the original container or an approved alternative made from a compatible material, kept tightly closed when not in use. Empty containers retain product residue and can be hazardous. Do not reuse container.
- Advice on general occupational hygiene** : Eating, drinking and smoking should be prohibited in areas where this material is handled, stored and processed. Workers should wash hands and face before eating, drinking and smoking. Remove contaminated clothing and protective equipment before entering eating areas. See also Section 8 for additional information on hygiene measures.

## Section 7. Handling and storage

**Conditions for safe storage, including any incompatibilities** : Store in accordance with local regulations. Store in original container protected from direct sunlight in a dry, cool and well-ventilated area, away from incompatible materials (see Section 10) and food and drink. Store locked up. Keep container tightly closed and sealed until ready for use. Containers that have been opened must be carefully resealed and kept upright to prevent leakage. Do not store in unlabeled containers. Use appropriate containment to avoid environmental contamination. See Section 10 for incompatible materials before handling or use.

## Section 8. Exposure controls/personal protection

### Control parameters

#### Occupational exposure limits (OSHA United States)

Ingredient name	CAS #	Exposure limits
Titanium Dioxide	13463-67-7	<b>ACGIH TLV (United States, 3/2018).</b> TWA: 10 mg/m <sup>3</sup> 8 hours.
Zinc Oxide	1314-13-2	<b>OSHA PEL (United States, 5/2018).</b> TWA: 15 mg/m <sup>3</sup> 8 hours. Form: Total dust <b>NIOSH REL (United States, 10/2016).</b> CEIL: 15 mg/m <sup>3</sup> Form: Dust TWA: 5 mg/m <sup>3</sup> 10 hours. Form: Dust and fumes STEL: 10 mg/m <sup>3</sup> 15 minutes. Form: Fume <b>OSHA PEL (United States, 5/2018).</b> TWA: 5 mg/m <sup>3</sup> 8 hours. Form: Fume TWA: 5 mg/m <sup>3</sup> 8 hours. Form: Respirable fraction TWA: 15 mg/m <sup>3</sup> 8 hours. Form: Total dust <b>ACGIH TLV (United States, 3/2018).</b> TWA: 2 mg/m <sup>3</sup> 8 hours. Form: Respirable fraction STEL: 10 mg/m <sup>3</sup> 15 minutes. Form: Respirable fraction

#### Occupational exposure limits (Canada)

Ingredient name	CAS #	Exposure limits
Titanium dioxide	13463-67-7	<b>CA British Columbia Provincial (Canada, 7/2018).</b> TWA: 3 mg/m <sup>3</sup> 8 hours. Form: Respirable dust TWA: 10 mg/m <sup>3</sup> 8 hours. Form: Total dust <b>CA Quebec Provincial (Canada, 1/2014).</b> TWA: 10 mg/m <sup>3</sup> 8 hours. Form: Total dust. <b>CA Alberta Provincial (Canada, 6/2018).</b> 8 hrs OEL: 10 mg/m <sup>3</sup> 8 hours. <b>CA Ontario Provincial (Canada, 1/2018).</b> TWA: 10 mg/m <sup>3</sup> 8 hours. <b>CA Saskatchewan Provincial (Canada, 7/2013).</b> STEL: 20 mg/m <sup>3</sup> 15 minutes. TWA: 10 mg/m <sup>3</sup> 8 hours.
Zinc Oxide	1314-13-2	<b>CA Alberta Provincial (Canada, 6/2018).</b> 8 hrs OEL: 2 mg/m <sup>3</sup> 8 hours. Form: Respirable 15 min OEL: 10 mg/m <sup>3</sup> 15 minutes. Form: Respirable <b>CA British Columbia Provincial (Canada,</b>

## Section 8. Exposure controls/personal protection

		<p><b>7/2018).</b>  TWA: 2 mg/m<sup>3</sup> 8 hours. Form: Respirable  STEL: 10 mg/m<sup>3</sup> 15 minutes. Form: Respirable</p> <p><b>CA Ontario Provincial (Canada, 1/2018).</b>  TWA: 2 mg/m<sup>3</sup> 8 hours. Form: Respirable fraction.  STEL: 10 mg/m<sup>3</sup> 15 minutes. Form: Respirable fraction.</p> <p><b>CA Quebec Provincial (Canada, 1/2014).</b>  TWAEV: 5 mg/m<sup>3</sup> 8 hours. Form: fume  STEV: 10 mg/m<sup>3</sup> 15 minutes. Form: fume</p> <p><b>CA Saskatchewan Provincial (Canada, 7/2013).</b>  STEL: 10 mg/m<sup>3</sup> 15 minutes. Form: respirable dust and fume  TWA: 2 mg/m<sup>3</sup> 8 hours. Form: respirable dust and fume</p>
--	--	--

### Occupational exposure limits (Mexico)

	CAS #	Exposure limits
Zinc Oxide	1314-13-2	<p><b>NOM-010-STPS-2014 (Mexico, 4/2016).</b>  TWA: 2 mg/m<sup>3</sup> 8 hours. Form: Respirable fraction  STEL: 10 mg/m<sup>3</sup> 15 minutes. Form: Respirable fraction</p>

### Appropriate engineering controls

: If user operations generate dust, fumes, gas, vapor or mist, use process enclosures, local exhaust ventilation or other engineering controls to keep worker exposure to airborne contaminants below any recommended or statutory limits.

### Environmental exposure controls

: **This product contains a Significant New Use Rule (SNUR) Chemical. Do not allow this product to enter drains, sewers, wastewater treatment systems, groundwater, streams, lakes or ponds. See Environmental Data Sheet (EDS) for additional details.**

Emissions from ventilation or work process equipment should be checked to ensure they comply with the requirements of environmental protection legislation. In some cases, fume scrubbers, filters or engineering modifications to the process equipment will be necessary to reduce emissions to acceptable levels.

### Individual protection measures

#### Hygiene measures

: Wash hands, forearms and face thoroughly after handling chemical products, before eating, smoking and using the lavatory and at the end of the working period. Appropriate techniques should be used to remove potentially contaminated clothing. Wash contaminated clothing before reusing. Ensure that eyewash stations and safety showers are close to the workstation location.

#### Eye/face protection

: Safety eyewear complying with an approved standard should be used when a risk assessment indicates this is necessary to avoid exposure to liquid splashes, mists, gases or dusts. If contact is possible, the following protection should be worn, unless the assessment indicates a higher degree of protection: safety glasses with side-shields.

#### Skin protection



## Section 8. Exposure controls/personal protection

- Hand protection** : Chemical-resistant, impervious gloves complying with an approved standard should be worn at all times when handling chemical products if a risk assessment indicates this is necessary. Considering the parameters specified by the glove manufacturer, check during use that the gloves are still retaining their protective properties. It should be noted that the time to breakthrough for any glove material may be different for different glove manufacturers. In the case of mixtures, consisting of several substances, the protection time of the gloves cannot be accurately estimated.
- Body protection** : Personal protective equipment for the body should be selected based on the task being performed and the risks involved and should be approved by a specialist before handling this product.
- Other skin protection** : Appropriate footwear and any additional skin protection measures should be selected based on the task being performed and the risks involved and should be approved by a specialist before handling this product.
- Respiratory protection** : Based on the hazard and potential for exposure, select a respirator that meets the appropriate standard or certification. Respirators must be used according to a respiratory protection program to ensure proper fitting, training, and other important aspects of use.

## Section 9. Physical and chemical properties

### Appearance

- Physical state** : Liquid.
- Color** : Not available.
- Odor** : Not available.
- Odor threshold** : Not available.
- pH** : 9.5
- Melting point/freezing point** : Not available.
- Boiling point/boiling range** : 100°C (212°F)
- Flash point** : Closed cup: >94°C (>201.2°F)
- Evaporation rate** : 0.09 (butyl acetate = 1)
- Flammability (solid, gas)** : Not available.
- Lower and upper explosive (flammable) limits** : Not available.
- Vapor pressure** : 2.3 kPa (17.5 mm Hg) [at 20°C]
- Vapor density** : 1 [Air = 1]
- Relative density** : 1.38
- Solubility** : Not available.
- Partition coefficient: n-octanol/water** : Not available.
- Auto-ignition temperature** : Not available.
- Decomposition temperature** : Not available.
- Viscosity** : Kinematic (40°C (104°F)): >0.205 cm<sup>2</sup>/s (>20.5 cSt)
- Molecular weight** : Not applicable.
- Aerosol product**
- Heat of combustion** : 0.674 kJ/g

## Section 10. Stability and reactivity

- Reactivity** : No specific test data related to reactivity available for this product or its ingredients.
- Chemical stability** : The product is stable.
- Possibility of hazardous reactions** : Under normal conditions of storage and use, hazardous reactions will not occur.
- Conditions to avoid** : No specific data.
- Incompatible materials** : No specific data.
- Hazardous decomposition products** : Under normal conditions of storage and use, hazardous decomposition products should not be produced.

## Section 11. Toxicological information

### Information on toxicological effects

#### Acute toxicity

Not available.

#### Irritation/Corrosion

Product/ingredient name	Result	Species	Score	Exposure	Observation
Titanium Dioxide	Skin - Mild irritant	Human	-	72 hours 300 Micrograms	-
Zinc Oxide	Eyes - Mild irritant	Rabbit	-	Intermittent 24 hours 500 milligrams	-
	Skin - Mild irritant	Rabbit	-	24 hours 500 milligrams	-

#### Sensitization

Not available.

#### Mutagenicity

Not available.

#### Carcinogenicity

Not available.

#### Classification

Product/ingredient name	OSHA	IARC	NTP
Titanium Dioxide	-	2B	-

#### Reproductive toxicity

Not available.

#### Teratogenicity

Not available.

#### Specific target organ toxicity (single exposure)

Not available.

#### Specific target organ toxicity (repeated exposure)

Not available.

## Section 11. Toxicological information

### Aspiration hazard

Not available.

**Information on the likely routes of exposure** : Not available.

### Potential acute health effects

**Eye contact** : No known significant effects or critical hazards.

**Inhalation** : No known significant effects or critical hazards.

**Skin contact** : No known significant effects or critical hazards.

**Ingestion** : No known significant effects or critical hazards.

### Symptoms related to the physical, chemical and toxicological characteristics

**Eye contact** : No specific data.

**Inhalation** : No specific data.

**Skin contact** : No specific data.

**Ingestion** : No specific data.

### Delayed and immediate effects and also chronic effects from short and long term exposure

#### Short term exposure

**Potential immediate effects** : Not available.

**Potential delayed effects** : Not available.

#### Long term exposure

**Potential immediate effects** : Not available.

**Potential delayed effects** : Not available.

#### Potential chronic health effects

Not available.

**General** : No known significant effects or critical hazards.

**Carcinogenicity** : Suspected of causing cancer. Risk of cancer depends on duration and level of exposure.

**Mutagenicity** : No known significant effects or critical hazards.

**Teratogenicity** : No known significant effects or critical hazards.

**Developmental effects** : No known significant effects or critical hazards.

**Fertility effects** : No known significant effects or critical hazards.

### Numerical measures of toxicity

#### Acute toxicity estimates

Not available.

## Section 12. Ecological information

### Toxicity

Product/ingredient name	Result	Species	Exposure
Titanium Dioxide Zinc Oxide	Acute LC50 >1000000 µg/l Marine water	Fish - Fundulus heteroclitus	96 hours
	Acute IC50 1.85 mg/l Marine water	Algae - Skeletonema costatum	96 hours
	Acute IC50 46 µg/l Fresh water	Algae - Pseudokirchneriella subcapitata - Exponential growth phase	72 hours
	Acute LC50 98 µg/l Fresh water	Daphnia - Daphnia magna - Neonate	48 hours
	Acute LC50 1.1 ppm Fresh water	Fish - Oncorhynchus mykiss	96 hours

### Persistence and degradability

Not available.

### Bioaccumulative potential

Product/ingredient name	LogP <sub>ow</sub>	BCF	Potential
Zinc Oxide	-	60960	high

### Mobility in soil

Soil/water partition coefficient (K<sub>oc</sub>) : Not available.

Other adverse effects : No known significant effects or critical hazards.

## Section 13. Disposal considerations

**Disposal methods** : **This product contains a Significant New Use Rule (SNUR) Chemical. Do not allow this product to enter drains, sewers, wastewater treatment systems, groundwater, streams, lakes or ponds. See Environmental Data Sheet (EDS) for additional details.**

The generation of waste should be avoided or minimized wherever possible. Disposal of this product, solutions and any by-products should at all times comply with the requirements of environmental protection and waste disposal legislation and any regional local authority requirements. Dispose of surplus and non-recyclable products via a licensed waste disposal contractor. Waste should not be disposed of untreated to the sewer unless fully compliant with the requirements of all authorities with jurisdiction. Waste packaging should be recycled. Incineration or landfill should only be considered when recycling is not feasible. This material and its container must be disposed of in a safe way. Care should be taken when handling emptied containers that have not been cleaned or rinsed out. Empty containers or liners may retain some product residues. Avoid dispersal of spilled material and runoff and contact with soil, waterways, drains and sewers.

## Section 14. Transport information

## Section 14. Transport information

	<b>DOT Classification</b>	<b>TDG Classification</b>	<b>Mexico Classification</b>	<b>IATA</b>	<b>IMDG</b>
<b>UN number</b>	Not regulated.	Not regulated.	Not regulated.	Not regulated.	Not regulated.
<b>UN proper shipping name</b>	-	-	-	-	-
<b>Transport hazard class(es)</b>	-	-	-	-	-
<b>Packing group</b>	-	-	-	-	-
<b>Environmental hazards</b>	No.	No.	No.	No.	No.
<b>Additional information</b>	-	-	-	-	-

**Special precautions for user** : Multi-modal shipping descriptions are provided for informational purposes and do not consider container sizes. The presence of a shipping description for a particular mode of transport (sea, air, etc.), does not indicate that the product is packaged suitably for that mode of transport. All packaging must be reviewed for suitability prior to shipment, and compliance with the applicable regulations is the sole responsibility of the person offering the product for transport. People loading and unloading dangerous goods must be trained on all of the risks deriving from the substances and on all actions in case of emergency situations.

**Transport in bulk according to Annex II of MARPOL and the IBC Code** : Not available.

**Proper shipping name** : Not available.

**Ship type** : Not available.

**Pollution category** : Not available.

## Section 15. Regulatory information

**U.S. Federal regulations** : **TSCA 5(a)2 proposed significant new use rules:** 5-Chloro-2-methylisothiazolinone  
**TSCA 5(a)2 final significant new use rules:** Trichloroethylene

This product contains a Significant New Use Rule (SNUR) Chemical. Do not allow this product to enter drains, sewers, wastewater treatment systems, groundwater, streams, lakes or ponds. See Environmental Data Sheet (EDS) for additional details.

### SARA 313

SARA 313 (40 CFR 372.45) supplier notification can be found on the Environmental Data Sheet.

### California Prop. 65

WARNING: This product contains chemicals known to the State of California to cause cancer and birth defects or other reproductive harm.

### International regulations

## Section 15. Regulatory information

- International lists** :
- Australia inventory (AICS):** Not determined.
  - China inventory (IECSC):** Not determined.
  - Japan inventory (ENCS):** Not determined.
  - Japan inventory (ISHL):** Not determined.
  - Korea inventory (KECI):** Not determined.
  - New Zealand Inventory of Chemicals (NZIoC):** Not determined.
  - Philippines inventory (PICCS):** Not determined.
  - Taiwan Chemical Substances Inventory (TCSI):** Not determined.
  - Thailand inventory:** Not determined.
  - Turkey inventory:** Not determined.
  - Vietnam inventory:** Not determined.

## Section 16. Other information

### Hazardous Material Information System (U.S.A.)

Health	*	1
Flammability		0
Physical hazards		0

The customer is responsible for determining the PPE code for this material. For more information on HMIS® Personal Protective Equipment (PPE) codes, consult the HMIS® Implementation Manual.

**Caution:** HMIS® ratings are based on a 0-4 rating scale, with 0 representing minimal hazards or risks, and 4 representing significant hazards or risks. Although HMIS® ratings and the associated label are not required on SDSs or products leaving a facility under 29 CFR 1910.1200, the preparer may choose to provide them. HMIS® ratings are to be used with a fully implemented HMIS® program. HMIS® is a registered trademark and service mark of the American Coatings Association, Inc.

### Procedure used to derive the classification

Classification	Justification
CARCINOGENICITY - Category 2	Calculation method

### History

**Date of printing** : 7/1/2019

**Date of issue/Date of revision** : 7/1/2019

**Date of previous issue** : 5/24/2019

**Version** : 6

**Key to abbreviations** :

- ATE = Acute Toxicity Estimate
- BCF = Bioconcentration Factor
- GHS = Globally Harmonized System of Classification and Labelling of Chemicals
- IATA = International Air Transport Association
- IBC = Intermediate Bulk Container
- IMDG = International Maritime Dangerous Goods
- LogPow = logarithm of the octanol/water partition coefficient
- MARPOL = International Convention for the Prevention of Pollution From Ships, 1973 as modified by the Protocol of 1978. ("Marpol" = marine pollution)
- N/A = Not available
- SGG = Segregation Group
- UN = United Nations

Indicates information that has changed from previously issued version.

### Notice to reader

## Section 16. Other information

It is recommended that each customer or recipient of this Safety Data Sheet (SDS) study it carefully and consult resources, as necessary or appropriate, to become aware of and understand the data contained in this SDS and any hazards associated with the product. This information is provided in good faith and believed to be accurate as of the effective date herein. However, no warranty, express or implied, is given. The information presented here applies only to the product as shipped. The addition of any material can change the composition, hazards and risks of the product. Products shall not be repackaged, modified, or tinted except as specifically instructed by the manufacturer, including but not limited to the incorporation of products not specified by the manufacturer, or the use or addition of products in proportions not specified by the manufacturer. Regulatory requirements are subject to change and may differ between various locations and jurisdictions. The customer/buyer/user is responsible to ensure that his activities comply with all country, federal, state, provincial or local laws. The conditions for use of the product are not under the control of the manufacturer; the customer/buyer/user is responsible to determine the conditions necessary for the safe use of this product. The customer/buyer/user should not use the product for any purpose other than the purpose shown in the applicable section of this SDS without first referring to the supplier and obtaining written handling instructions. Due to the proliferation of sources for information such as manufacturer-specific SDS, the manufacturer cannot be responsible for SDSs obtained from any other source.

## **APPENDIX E – STAGING AREA PLAN**





8th Ave

8th Ave

PROVIDED STAGING AREA

Fairbanks City Hall

Fairbanks Police Department

Veteran's Memorial Park

Chevron Fairbanks

Big Brothers Big Sister

S Salon

Ice Fog Vapor

10th Ave

Google

Cushman St

10th Ave