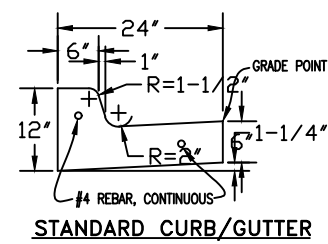
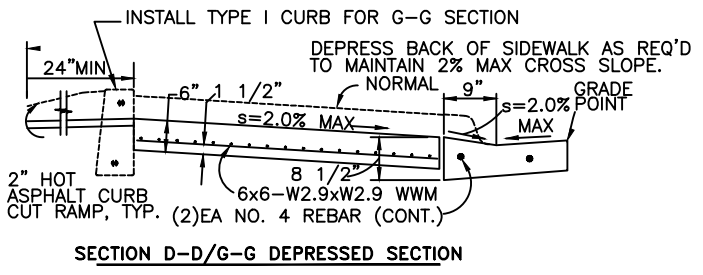
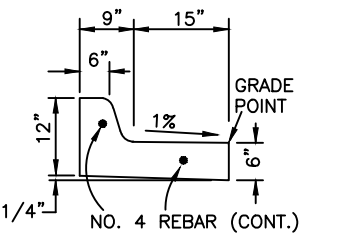
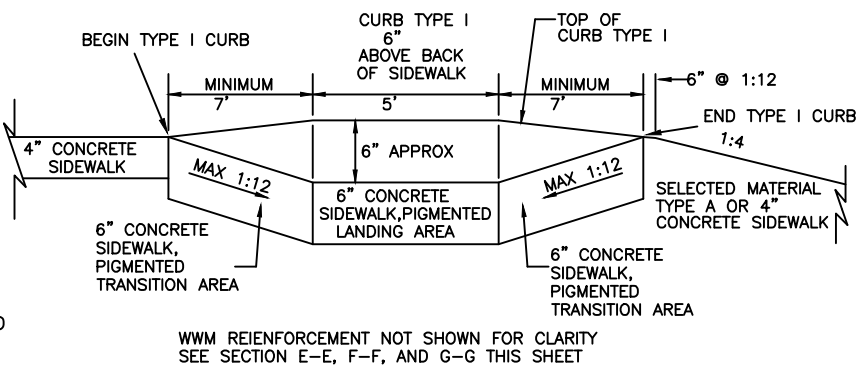
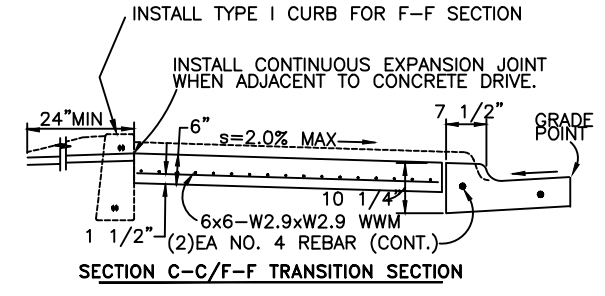
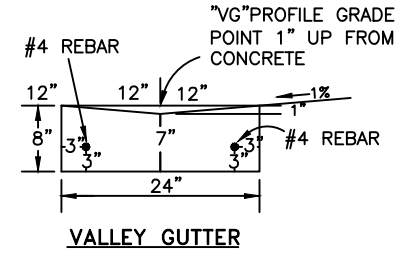
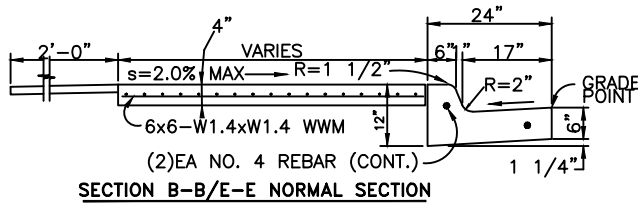
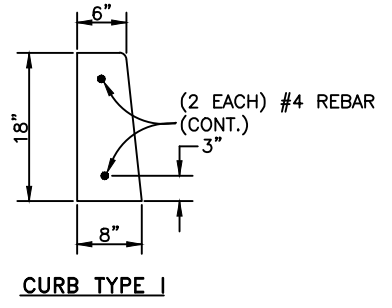
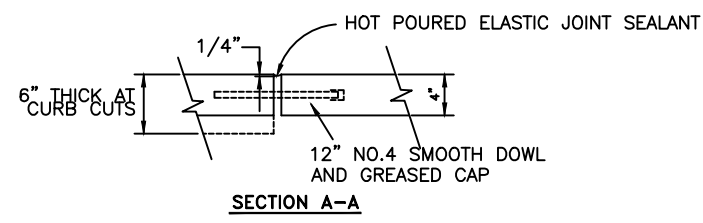


TYPICAL SIDEWALK PLAN

(VARIES WITH NO VALLEY GUTTER OR WITH SIDEWALK SEPARATED FROM CURB AS SHOWN ON PLANS)

GENERAL NOTES:

1. CURB CUT SECTIONS SHALL BE 6" THICK TO INCLUDE TRANSITIONS.
2. CURB RAMP SECTIONS SHALL BE 6" THICK TO INCLUDE TRANSITIONS.
3. INSTALL CONTINUOUS FULL DEPTH 3/4" CONSTRUCTION JOINT AT ALL LOCATIONS WHERE SIDEWALK AND CURB (ANY TYPE) MEET.
4. PROTECT CONCRETE DURING CURE.
5. SIDEWALK - BROOM FINISH (MEDIUM)
6. SEAL ALL EXPANSION JOINTS WITH HOT Poured ELASTIC TYPE JOINT SEAL CONFORMING TO ASTM D6690
7. FOR SIDEWALKS LARGER OR DIFFERENTLY CONFIGURED THAN SHOWN PLACE EXPANSION AND CONTRACTION JOINTS AS ENGINEER DIRECTS.
8. INSTALL 3/8" CONSTRUCTION JOINT MATERIAL BETWEEN NEW CONCRETE AND ADJACENT BUILDINGS, POLES AND HYDRANTS.
9. ALL CURB RAMPS SHALL HAVE A DETECTABLE WARNING STRIP PER ADA REQUIREMENTS.
10. WWM STEEL REINFORCEMENT FOR PEDESTRIAN RAMPS AND CURB CUTS SHALL BE 6"x6"- W2.9 X W2.9 WWM. FOR NORMAL SIDEWALK REINFORCEMENT SHALL BE 6"x6"- W1.4 X W1.4 ALL STEEL SHALL BE SET ON SPACERS AND PULLED UP AS REQUIRED TO POSITION STEEL 1 1/2" UP FROM BOTTOM OF SIDEWALK.
11. EXPANSION AND CONTRACTION JOINTS IN THE SIDEWALK SHALL LINE UP WITH EXPANSION AND CONTRACTION JOINTS IN THE CURB.



11/16/18	UPDATE DEP. SECTION DETAIL/DEL. RED DYE NOTE	RHP/KLL
9/26/17	UPDATE CURB CUT & ADA DETAILS	RHP
7/26/17	DELETE AASHTO AND REPLACE WITH ASTM D 6690	RHP
2/1/10	NEW CD1	RHP,GSC
DATE	REVISION	BY

NOT TO SCALE

DESIGNED:	
DRAWN:	STAFF
CHECKED:	RHP,GSC
DATE:	3/23/07

CITY OF FAIRBANKS, ALASKA
ENGINEERING DIVISION

STANDARD CONCRETE DETAILS

