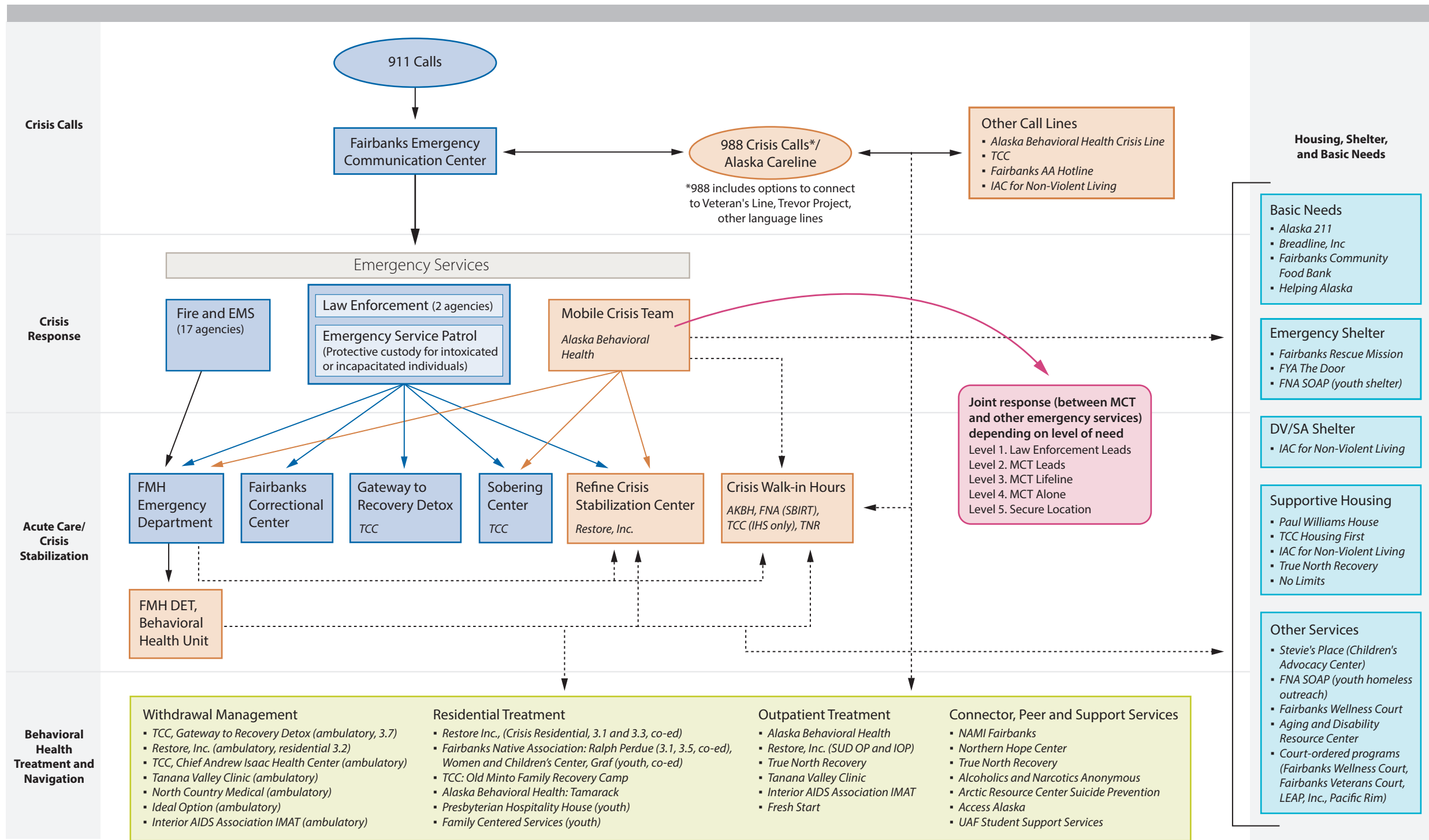


Phase 1 Fairbanks Behavioral Health Crisis System



AKBH = Alaska Behavioral Health
 DET = Diagnosis/Evaluation/Treatment
 DV/SA = Domestic Violence/Sexual Assault
 ESP = Emergency Service Patrol

FMH = Fairbanks Memorial Hospital
 FNA = Fairbanks Native Association
 FYA = Fairbanks Youth Advocates
 IAC = Interior Alaska Center

SOAP = Street Outreach & Advocacy Program
 SUD = substance use disorder
 TCC = Tanana Chiefs Conference

TNR = True North Recovery
 WM = withdrawal management
 UAF = University of Alaska Fairbanks

--- Referral/Navigation
 [Blue Box] First Responders
 [Orange Box] Behavioral Crisis Services

— Transport or Call Transfer
 [Yellow Box] Behavioral Health Treatment
 [Light Blue Box] Housing, Shelter, and Basic Needs