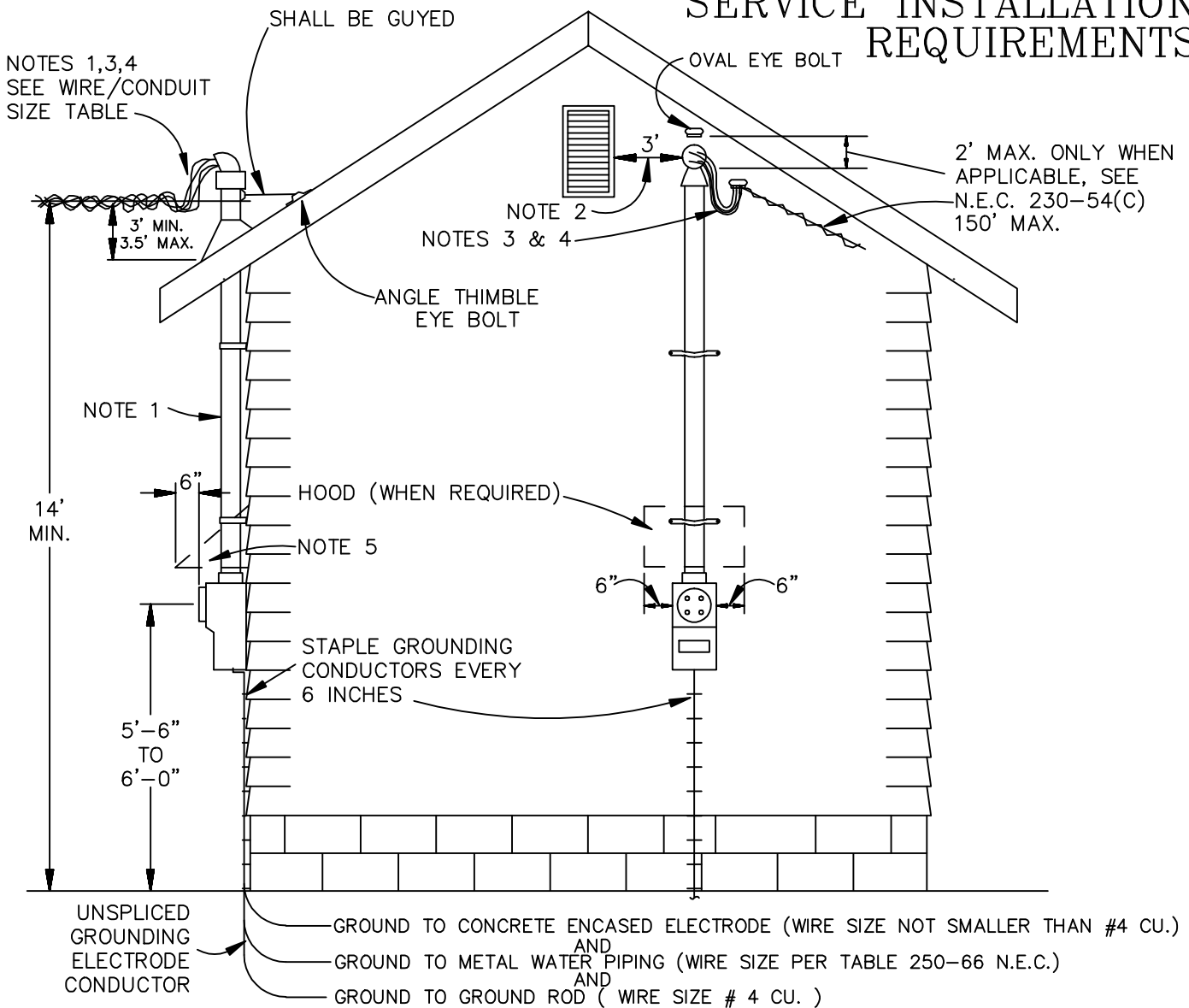


SERVICE INSTALLATION REQUIREMENTS



NOTES:

1. SERVICE ENTRANCE. MASTS THAT EXTEND ABOVE THE ROOF LINE SHALL BE MINIMUM 2" RIGID STEEL CONDUIT, AND SHALL BE GUYED USING MINIMUM 1/8" AIRCRAFT CABLE, APPROVED CLAMPS AND NUTTED 5/8" CLOSED EYE BOLT. (N.E.C. 230-28 AMENDMENT)
2. CONDUCTORS SHALL BE ABOVE OR AT LEAST 36" FROM ANY BUILDING OPENING. BUILDING OPENINGS SHALL INCLUDE VENTS. (N.E.C. 230-9 AMENDMENT)
3. INDIVIDUAL UNGROUNDED SERVICE ENTRANCE CONDUCTORS SHALL BE INSULATED WITH XHHW, RHW OR R-TYPE INSULATION APPROVED FOR EXTERIOR USE. NO OTHER INSULATION IS ACCEPTABLE. (N.E.C. 230-41 AMENDMENT)
4. CONNECTIONS AT SERVICE HEAD. FOR 100 AMP SERVICE LEAVE 18" TAILS, FOR 200 AMP SERVICE LEAVE 24" TAILS. AND STRIP NEUTRAL TAILS TO THE WEATHERHEAD. (N.E.C. 230-54 AMENDMENT)
5. EXTERIOR ELECTRICAL SERVICES SHALL BE PLACED ON THE GABLE END OF THE STRUCTURE WHERE POSSIBLE. WHEN SERVICES ARE INSTALLED ON THE EAVE SIDE OF THE BUILDING, THE MAST SHALL EXTEND ABOVE THE ROOF. IN THE EVENT THE EAVE IS NOT 18" IN LENGTH THE METER AND DISCONNECT SHALL BE PROTECTED BY AN 18 GAUGE GALVANIZED HOOD. THE HOOD SHALL EXTEND AT LEAST 6" PAST THE METER FACE AND 6" ON EACH SIDE OF THE SERVICE EQUIPMENT. (N.E.C. 230-28 AMENDMENT)

*6. REVISED IN CONJUNCTION WITH THE 2005 N.E.C. AS ADOPTED BY THE CITY OF FAIRBANKS.

WIRE/CONDUIT SIZE TABLE		
**WIRE MUST BE COPPER OR #1 AND LARGER ALUMINUM		
SERVICE SIZE (MIN.)	MIN. WIRE SIZE	MIN. CONDUIT SIZE
100 AMP	#3 COPPER**	1-1/4"
200 AMP	3/0 COPPER**	2"

City Government/PLU/DWG/Elc-Service/00101C.dwg, Serviced, 09/02/2008 16:51