

1/2"Ø ANCHOR BOLTS
 W/ 2X2X³/₁₆ STL PL
 WASHER @ 4'-0" O.C.
 MAX AND WITHIN 1'-0"
 OF ALL SILL PLATE
 ENDS AND SPLICES, 7"
 MIN EMBED

(3) 10d NAILS MIN FLOOR
 SHEATHING TO BLOCKING

PROVIDE 2x BLOCKING, FULL DEPTH @
 4'-0" O.C. MAX AT PARALLEL JOISTS

2x SILL PL W/ SILL SEALER

BOND BEAM W/ (2) #4 HORIZ
 BARS. LAP 15" MIN AT ENDS,
 PROVIDE CORNER BARS AT ALL
 BLDG CORNERS AND
 INTERSECTIONS

R15 INSULATION

BOND BEAM

#5 @24" O.C. VERT.
 REINFORCING. VERTS TO BE
 OFFSET 1" TO 1 1/2" FROM
 CENTERLINE TOWARD INNER FACE

SOLID GROUT AT ALL CELLS

1/2" EXPANSION JOINT MATERIAL

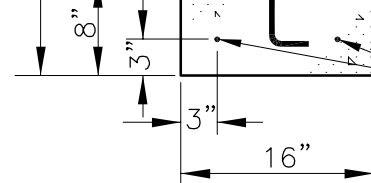
(2) #4 HORIZ BAR CONTINUOUS IN
 FOOTINGS. LAP 15" MIN AT ENDS

METAL FLASHING

APPROVED
 DAMP-PROOFING
 (REQUIRES INSP)

8'-0" MAX
 (12) COURSES OF 8" BLOCKS

24"
 8"
 TO MATCH SIZE
 AND SPACING OF
 VERTICAL
 REINFORCING.



NOTES:

1. VERIFY THAT INSPECTION REQUIREMENTS HAVE BEEN MET BEFORE PLACING ANY CONCRETE.
2. DESIGN ASSUMPTIONS: RESIDENTIAL, MAXIMUM OF 2 FLOORS AND 32' BUILDING WIDTH. USE COMPACTED NFS GRAVEL BACKFILL WITH 2000 PSF BEARING CAPACITY, (SEE IRC SECTIONS R403 & 404).
3. CONCRETE AND GROUT: 2500 PSI MINIMUM COMPRESSIVE STRENGTH.
4. REBAR MINIMUMS: GRADE 40, 30 BAR DIAMETER LAP SPLICES.
5. PROVIDE ADEQUATE WALL BRACING BEFORE PLACING BACKFILL.
6. ANCHOR BOLT SPACING AT SILL PLATE MAY BE INCREASED TO A MAXIMUM OF 6'-0" O.C. FOR A SINGLE STORY RESIDENCE.

CITY OF FAIRBANKS
STANDARD RESIDENTIAL FOUNDATIONS

FULL BASEMENT - CONCRETE BLOCK

SFD-7