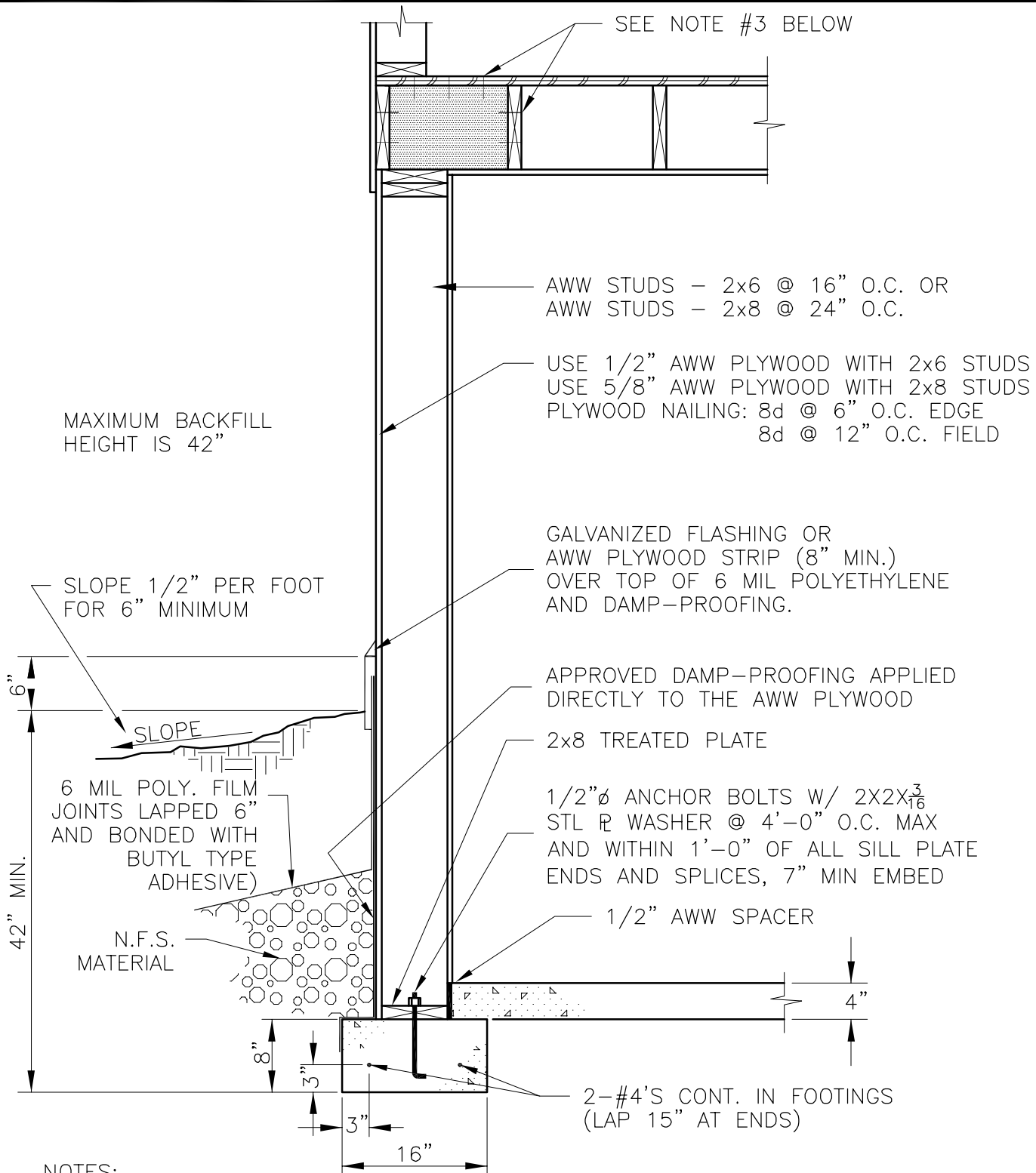


P:\City Building\2010 AMENDMENTS\SFD-6.DWG - REVISED 12-23-2010 4:20:55 PM



NOTES:

1. DESIGN ASSUMPTIONS: RESIDENTIAL, MAXIMUM OF 2 FLOORS AND 32' BUILDING WIDTH. USE COMPACTED NFS GRAVEL BACKFILL WITH 2000 PSF BEARING CAPACITY, (SEE IRC R403 & 404 AS AMENDED) CONCRETE AND GROUT: 2500 PSI MINIMUM.
2. INSULATION AND THERMAL PROVISIONS HAVE BEEN OMITTED FOR CLARITY. REFER TO THE FAIRBANKS AMENDMENTS TO THE IECC FOR MINIMUM REQUIREMENTS.
3. FULL DEPTH BLOCKING @ 4'-0" O.C. BETWEEN RIM JOIST AND NEXT JOIST PARALLEL TO THE FOUNDATION WALL. FASTEN BLOCKING TO SUBFLOOR ABOVE AND PLATE BELOW.
4. OBTAIN INSPECTOR APPROVAL BEFORE COVERING: SHEATHING, DAMPROOFING AND POLY FILM.
5. PROVIDE ADEQUATE WALL BRACING BEFORE PLACING BACKFILL.
6. ALL FASTENERS INTO REQUIRED AWW MUST BE HOT DIPPED GALVANIZED OR STAINLESS STEEL.

CITY OF FAIRBANKS	
STANDARD RESIDENTIAL FOUNDATIONS	
FULL BASEMENT - ALL WEATHER WOOD	SFD-6

P:\BUILDING\2010 AMENDMENTS\SFD-6.DWG & 24:23A PLOT SCALE: 1=16 REV 7/29/10