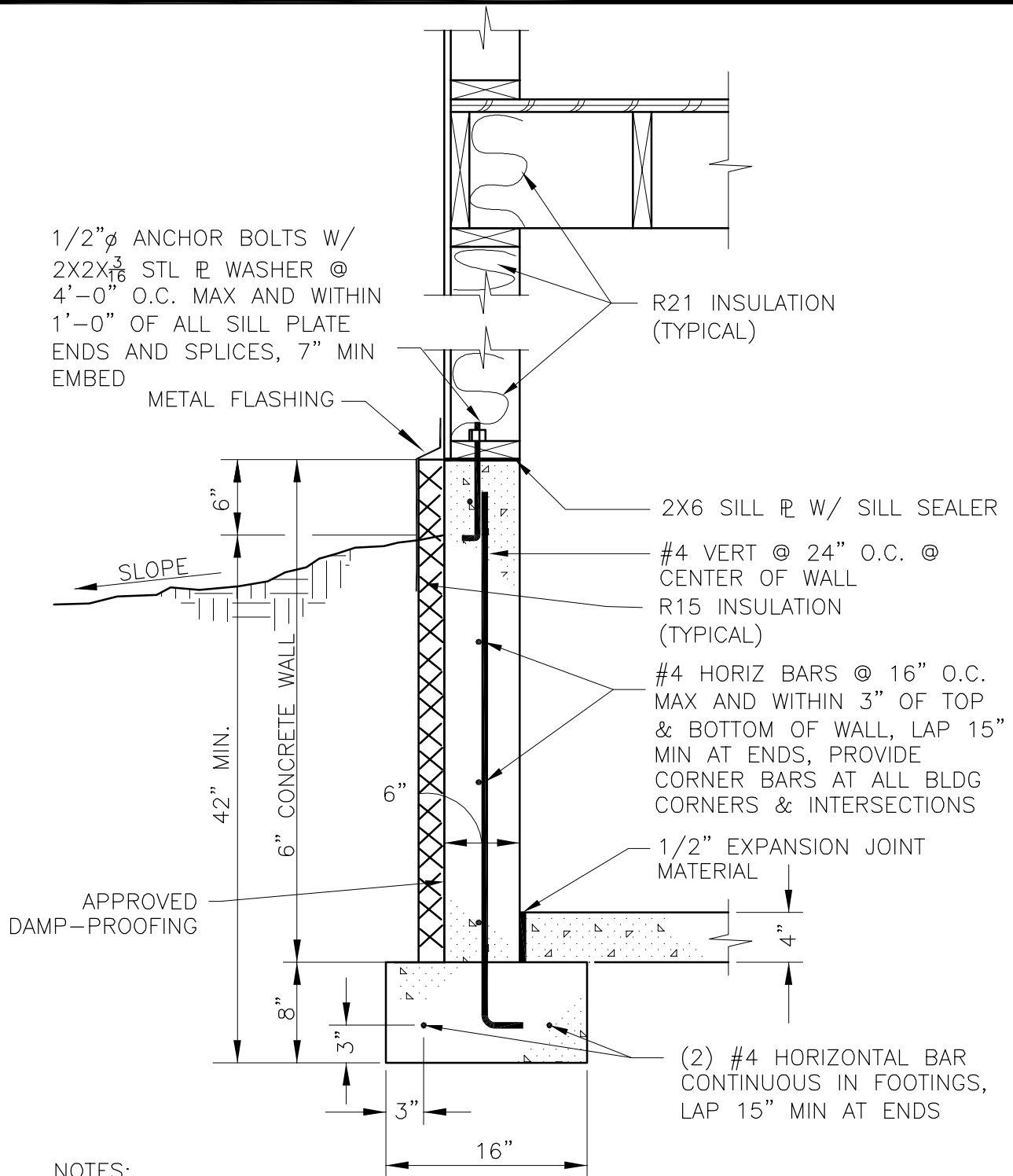


P:\CITY GOVERNMENT\BUILDING 2010 AMENDMENTS\SFD-5.DWG. 12-23-2010 4:22:02 PM



NOTES:

1. VERIFY THAT INSPECTION REQUIREMENTS HAVE BEEN MET BEFORE PLACING ANY CONCRETE.
2. DESIGN ASSUMPTIONS: RESIDENTIAL, MAXIMUM OF 2 FLOORS AND 32' BUILDING WIDTH. USE COMPACTED NFS GRAVEL BACKFILL WITH 2000 PSF BEARING CAPACITY, (SEE IRC SECTIONS R403 & 404).
3. CONCRETE AND GROUT: 2500 PSI MINIMUM COMPRESSIVE STRENGTH.
4. REBAR MINIMUMS: GRADE 40, 30 BAR DIAMETER LAP SPLICES.
5. PROVIDE ADEQUATE WALL BRACING BEFORE PLACING BACKFILL.
6. ANCHOR BOLT SPACING AT SILL PLATE MAY BE INCREASED TO A MAXIMUM OF 6'-0" O.C. FOR A SINGLE STORY RESIDENCE.
7. WET SETTING OF VERTICAL REINFORCING IS STRICTLY PROHIBITED.

CITY OF FAIRBANKS	
STANDARD RESIDENTIAL FOUNDATIONS	
DAYLIGHT BASEMENT - 6" CONCRETE	SFD-5

P:\CITY GOVERNMENT\BUILDING 2010 AMENDMENTS\SFD-5.DWG & 24.23A REV.12/28/10