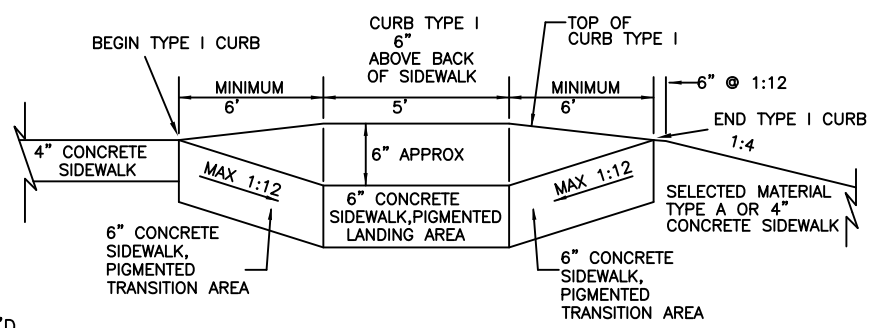
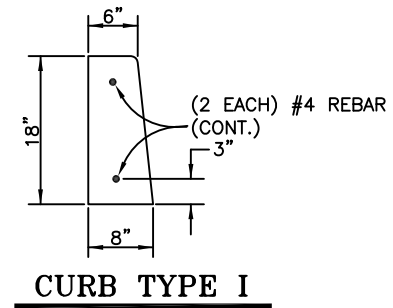


TYPICAL SIDEWALK PLAN

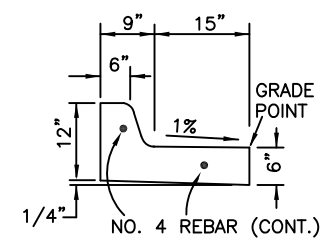
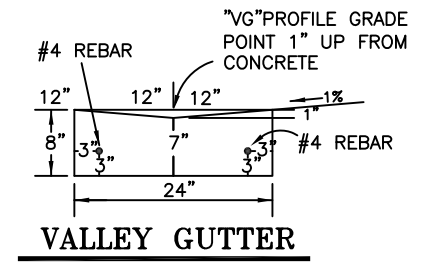
(VARIES WITH NO VALLEY GUTTER OR WITH SIDEWALK SEPARATED FROM CURB AS SHOWN ON PLANS)

GENERAL NOTES:

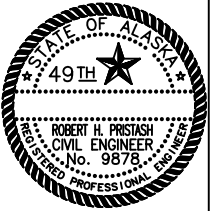
- CURB CUT SECTIONS SHALL BE 6" THICK TO INCLUDE TRANSITIONS.
- CURB RAMP SECTIONS SHALL BE 6" THICK TO INCLUDE TRANSITIONS.
- INSTALL CONTINUOUS FULL DEPTH 3/8" CONSTRUCTION JOINT AT ALL LOCATIONS WHERE SIDEWALK AND CURB (ANY TYPE) MEET.
- PROTECT CONCRETE DURING CURE.
- SIDEWALK - BROOM FINISH (MEDIUM)
- SEAL ALL EXPANSION JOINTS WITH HOT Poured ELASTIC TYPE JOINT SEAL CONFORMING TO AASHTO DESIGNATION M173-60.
- FOR SIDEWALKS LARGER OR DIFFERENTLY CONFIGURED THAN SHOWN PLACE EXPANSION AND CONTRACTION JOINTS AS ENGINEER DIRECTS.
- INSTALL 3/8" CONSTRUCTION JOINT MATERIAL BETWEEN NEW CONCRETE AND ADJACENT BUILDINGS, POLES AND HYDRANTS.
- ALL CURB RAMPS SHALL HAVE A 2' X 5' DETECTABLE WARNING STRIP PER ADA REQUIREMENTS.
- WWM STEEL REINFORCEMENT FOR PEDESTRIAN RAMPS AND CURB CUTS SHALL BE 6"x6"- W2.9 X W2.9 WWM. FOR NORMAL SIDEWALK REINFORCEMENT SHALL BE 6"x6"- W1.4 X W1.4 ALL STEEL SHALL BE SET ON SPACERS AND PULLED UP AS REQUIRED TO POSITION STEEL 1 1/2" UP FROM BOTTOM OF SIDEWALK.
- EXPANSION AND CONTRACTION JOINTS IN THE SIDEWALK SHALL LINE UP WITH EXPANSION AND CONTRACTION JOINTS IN THE CURB.
- RED DYE (DAVIS COLOR 160) 5 # PIGMENT PER SACK CEMENT ADDED TO ALL CURB RAMPS STARTING AT THE TOP OF TRANSITION.



WWM REINFORCEMENT NOT SHOWN FOR CLARITY SEE SECTION E-E, F-F, AND G-G THIS SHEET



1. CONSTRUCT REJECT CURB AND GUTTER AS SHOWN, WHERE INDICATED ON THE TYPICAL SECTIONS.



2/1/10	NEW CD1	RHP,GSC
10/27/08		RHP
DATE	REVISION	BY

NOT TO SCALE

DESIGNED:	
DRAWN:	STAFF
CHECKED:	RHP,GSC
DATE:	3/23/07

CITY OF FAIRBANKS, ALASKA
ENGINEERING DIVISION

STANDARD CONCRETE DETAILS

CD1